

SHARP®

INNOVATIVE FUNCTIONALITY FOR OUTSTANDING RESULTS



*"Outstanding A4 Color MFP
for Large Workgroups"*
MX-C402SC



*"Outstanding A4 Monochrome
MFP for Large Workgroups"*
MX-B402SC



MX-C402SC
MX-B402SC

SCAN-CENTRIC

MX-C402SC AND MX-B402SC

Precision engineered to meet the demanding needs of today's workflow-intensive environments, the **Sharp Frontier Scan-Centric series** brings scanning and integration to a whole new level. Enabled with Scan²™ Technology and the award-winning **Sharp OSA® platform**, the **MX-C402SC and MX-B402SC** offer highly advanced scanning capabilities, providing impressive automated workflow processing and streamlined workgroup productivity. For **true versatility** in accommodating diverse scanning and copying needs, the Scan-Centric series single pass document feeder is also equipped with **dual scanning paths**, capable of feeding heavy media such as **plastic ID or business cards** as well as traditional paper documents. To help stay ahead of today's fast-paced office document distribution needs, the **large touch screen color display** simplifies operation through an **intuitive graphical user interface**, while the full-size **retractable keyboard** puts data entry right at your fingertips. Built on the same cutting-edge engine design as the Frontier series MFPs and printers, the **MX-C402SC and MX-B402SC** merge the **multifunctional power** of standard A3 copiers with the **convenience and simplicity** of single-function printers and the **document handling capabilities of single-function scanners**. Incorporating **common controller architecture**, the Frontier series provides the uniform operability and functionality found in the **award-winning Sharp MFP product line**. The **MX-C402SC and MX-B402SC** are designed to help **reduce operating costs and downtime**, while also providing a value-added approach to network and software integration. The Sharp Frontier series: more power with less complexity, so you can **work without limits**.





The Sharp MX-C402SC and MX-B402SC offer productivity in action to streamline document workflow and enhance business applications.

OUT OF THIS WORLD FEATURES

TRUE MULTI-TASKING

SCAN² TECHNOLOGY

DUAL SCAN PATHS

PLASTIC CARD FEEDING

RETRACTABLE KEYBOARD

SHARP OSA TECHNOLOGY

- Vivid color[†] and crisp black-and-white documents can be quickly produced at speeds up to **40 pages per minute** and at print resolutions up to **1200 x 1200 dpi**.
- Powerful controllers for true **multi-tasking** performance and superior **multi-functional** productivity.
- High performance **Duplex Single Pass Feeder** empowered with **Scan² technology** offers unparalleled reliability and supports **full-color** scanning.
- **Dual scanning paths** provide the versatility to scan and copy diverse media types: a curved path for regular paper, and a **straight path for feeding heavy media**, such as plastic ID cards and business cards.
- Large **high-resolution, touch screen color display** with intuitive graphical user interface makes advanced multi-function features easy to use.



MX-C402SC Shown

- **Retractable QWERTY keyboard** allows for easy and convenient data entry for document distribution and retrieval.
- Sharp's **ImageSEND™** technology helps securely scan documents to seven types of destinations at speeds up to **50 images per minute**.
- Sharp's easy-to-use Document Filing System provides up to 50 GB of hard drive space for fast document storage and retrieval, with thumbnail view and image preview capabilities.
- The optional **space-saving Inner Finisher** not only provides exceptional productivity, but also automates time-consuming tasks such as stapling, sorting and offset stacking.
- Standard third-generation Sharp OSA development platform enables users to **access network applications, helping to reduce redundancy and streamline workflow**.
- Supports Sharp's latest **award-winning** multi-level document and network security suite, which conforms to the **IEEE-2600™-2008 security standard** for MFP devices.*
- User authentication offers an added layer of security to **control access** to the device, as well as to **release documents** for printing when and where you need them.

[†]Color printing and copying available only on MX-C402SC.

*Some features may require optional equipment and/or software.

INNOVATION

INNOVATION THAT HELPS BOOST PRODUCTIVITY



Robust document feeder for fast, single pass, duplex color scanning.



Quickly and easily scan business cards or even plastic ID cards right from the feeder!



Retractable keyboard makes data entry quick and easy.

Get on the fast track in today's competitive business environment with Sharp's powerful and dynamic MX-C402SC and MX-B402SC.

The Flexibility and Performance You Need

With large customizable high-resolution touch screen color displays and powerful multi-tasking controllers, these high-speed workgroup document systems can help elevate your office productivity to the next level. The intuitive menu navigation system with razor-sharp graphics makes operating them simple and easy. With Sharp's true multi-tasking controllers, complex print jobs can be processed quickly, even while documents are being scanned. But that's just the beginning—with a standard Scan² Duplex Single Pass Feeder, automatic duplexing, and electronic sorting, you'll complete even large jobs in a snap.

High Quality Output You Can Rely On

The Scan-Centric series combines Sharp's second generation micro-fine toner technology with 1200 x 1200 dpi print resolution to produce documents with crisp, clear images and high quality detail.

Unique Scan-Centric Features and Scan² Technology

The Scan-Centric series' robust document feeder features dual scanning paths to accommodate diverse scanning and copying needs. The curved path handles regular paper, while the straight path allows feeding of heavy media, such as plastic ID cards, business cards and other items—an MFP industry first. This series' high performance Duplex Single Pass Feeder empowered with Sharp's Scan² technology supports full color scanning and offers unparalleled reliability. Ideal for front office and scan-centric environments, these models allow users to process large workflows with incredible efficiency.



Retractable QWERTY Keyboard Offers Added Convenience

For workgroups that perform a significant amount of data entry, the MX-C402SC and MX-B402SC include a standard retractable keyboard. Designed to simplify e-mail address and subject line entries, as well as repetitive scanning tasks and user authentication, the built-in keyboard offers users a familiar ergonomic interface.

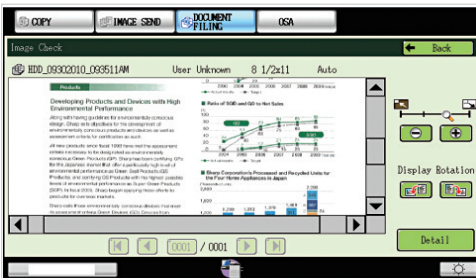
ENHANCED WORKFLOW MANAGEMENT



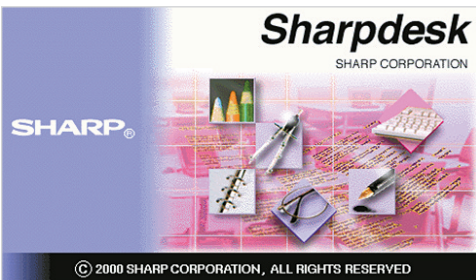
The optional Card Reader Mounting Kit helps enable secure login using a proximity or magnetic stripe ID card.



Sharp's easy-to-use Document Filing System with Thumbnail Preview.



Sharp's Image Check feature allows users to preview stored documents at the device. Easily zoom, rotate and scroll.



Intuitive desktop display features thumbnail viewing and file search allows searching by file name, keyword, or thumbnail.

User-friendly features help increase document workflow efficiency and optimize day-to-day operations.

A True Multi-Tasking Document System

The MX-C402SC and MX-B402SC feature **high-performance, true multi-tasking, multi-function controllers** that deliver copy, print, scan and fax* jobs continuously for optimum efficiency. Some controllers only perform one or two operations at a time, but the MX-C402SC and MX-B402SC continually process incoming jobs even while existing ones are being performed.

Secure Login Ensures Confidentiality

To access the features assigned to their group, users enter a Code, Local Name and Password or LDAP User Authentication. Users can also login with a proximity or magnetic-stripe ID card when the optional Card Reader Mounting Kit is installed. The Scan-Centric series provides a secure environment that helps protect the confidentiality of documents and network data.

Innovative Document Filing

Sharp's easy-to-use **Document Filing System** provides up to 50 GB of hard drive space to store frequently used files such as forms, reports and other commonly used documents for printing and distribution. Plus, with private storage features and **PIN-code access**, you can store sensitive documents securely. And with Sharp's **Quick File Folder**, you can temporarily store documents with fast, one-touch simplicity. An easy-to-use backup system helps ensure your files are safe.

Convenient Document Viewing Options

To make managing all of your stored jobs simple, the MX-C402SC and MX-B402SC touch screen color display offers an intuitive **Thumbnail Preview** to allow walk-up users to easily locate stored jobs even if they don't know the file name. For added convenience, an advanced **Image Check** feature allows selected files to be previewed on-screen—walk-up users can even zoom in, change print attributes or move a file to another folder. With storage capacity for up to 7,200 pages, your document workflow can improve significantly.

Versatile Direct Printing and Scanning Functionality

Whether you are scanning or printing, the Sharp MX-C402SC and MX-B402SC allow you to interact **directly—driver-free**—with sources such as USB memory, network folder, FTP server, the MFP's hard disk drive, Embedded Web Page and e-mail. File types include PDF, Encrypted PDF, JPG, TIFF, Postscript® XPS, TXT, PCL, and PRN.

Sharpdesk® Software for Total Document Management

Powerful, flexible and intuitive, Sharpdesk personal document management software enables you to easily manage all of your scanned documents. Easy-to-use tools help you organize, edit, even combine scanned files, for maximum productivity. The innovative **Search and Index feature** provides sophisticated tools that enable you to retrieve archived documents with incredible simplicity.



*Some features may require optional equipment and/or software.



PRECISION ENGINEERED, QUALITY RESULTS



Robust, easy-to-use print features help maximize document workflow efficiency in virtually any business environment.

Exceptional Print Quality with Professional Output

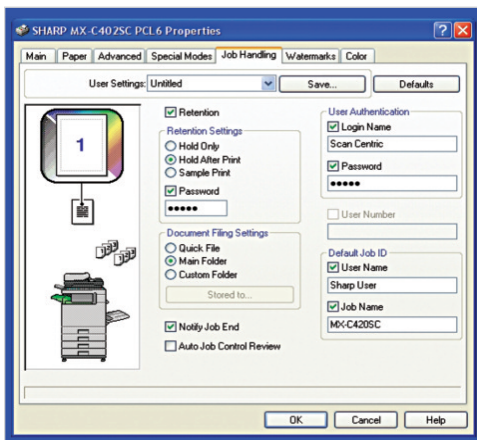
With the Scan-Centric series, your workgroup can produce rich, vibrant color output (MX-C402SC) and razor-sharp B&W documents. Plus, with **1200 x 1200 dpi** resolution, even documents with fine detail will look great! Sharp's easy-to-use print drivers allow users to set up even complex jobs with just a few mouse clicks. Simple plug-and-play operation makes it easy to take advantage of advanced feature sets in a snap. Additional functions like Two-Sided, Pamphlet Style and N-Up printing allow you to quickly produce a variety of document types.

Advanced Job Retention Features Enhance Productivity

Sharp's innovative printing system makes it easy for any business to store and archive print jobs. With the ability to retain jobs on the MX-C402SC and MX-B402SC hard drive, documents can be stored and reprinted again and again by walk-up users or through the **Embedded Web Page**. Print jobs can even be sent to this series for archiving without printing them! Need to store sensitive documents? No problem! Users can assign a password right from the print driver or from the MX-C402SC and MX-B402SC operation panel!

Get Professional Results with Inner Finishing

The **space-efficient optional Inner Finisher** can be added without taking up additional floor space. Not only does it automate time consuming tasks such as stapling, sorting and offset stacking, it also provides exceptional productivity. Now you can produce professional quality documents from your desktop that look so good, everyone will think you had them sent out to a professional printer.



With Sharp's advanced job handling features, users can easily retain print jobs on the MX-C402SC and MX-B402SC hard drives for reprinting at a later date.



Send a print job to your network and print it on any connected Sharp MFP or printer with just a quick swipe of your ID badge.



MX-C402SC cabinet-top (above) and floor-standing console (right), configured with the space-efficient, optional Inner Finisher.

FLEXIBILITY

FLEXIBLE DOCUMENT DISTRIBUTION



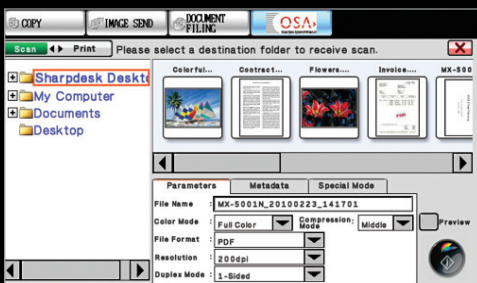
In today's fast-moving business environments, you need every advantage you can get—the Sharp Scan-Centric Series gives you the edge.

Integrated Network Scanning

With Sharp's powerful ImageSEND technology, you get one-touch distribution features that help centralize document workflow, reduce mail costs and save time. With up to seven destinations—E-mail, Desktop, FTP, Network Folders (SMB), USB, Fax and Internet Fax—getting your document where it needs to go is as easy as pushing a button. High-volume workgroups will appreciate the Send to Group mode that allows you to mix group broadcast to E-mail, Fax, and Internet Fax for increased efficiency.*

Convenient E-mail Distribution

With Lightweight Directory Access Protocol (LDAP), there's no need to manually enter a recipient's complete e-mail address. Simply enter the first few characters and the MX-C402SC and MX-B402SC automatically search and display a list of matching names. Unique File Naming allows users to enter specific file names with custom subject fields, so it's easier than ever to recall files when you need them. And with Sharpdesk® personal document management software, users can easily organize their scanned documents and integrate them into everyday workflow.*



The Sharpdesk Connector for Sharp OSA v3.5 enabled MFPs enhances scan workflow options.

Integrated Super G3 Fax and Internet Fax

Add powerful facsimile capabilities to your MX-C402SC and MX-B402SC with the optional Super G3 fax module, which offers advanced features such as automatic stapled/copied receptions and Inbound Fax Routing to e-mail. Sharp's innovative PC fax driver enables users to send fax documents right from their desktop. For Internet Fax operation, add the optional B&W Internet Fax expansion kit.



*Some features may require optional equipment and/or software.

INTEGRATION

GET MORE OUT OF NETWORK APPLICATIONS



Sharp OSA® technology at a glance

- Automate tasks and save time with seamless integration between the Scan-Centric Series and network applications
- Centralized applications minimize set-up and installation on multiple Sharp products
- Virtually eliminates repetitive tasks and streamlines workflow, increasing efficiency
- Maximize your return on investment with tighter integration among IT assets
- Industry standard programming leads to faster deployment of new solutions

Streamline document workflow and enhance productivity with the Sharp OSA platform.

Versatile Application Integration

The MX-C402SC and MX-B402SC high-speed Scan-Centric document systems provide powerful functionality for your business so you can immediately leverage your previous investments in data management infrastructure.* While others are limited to a small circle of productivity, the innovative Sharp OSA development platform allows users to maximize the power of their back-end systems right from the control panel. It's really a new way of thinking with "power at the panel" for automation of tasks and a streamlined workflow.

Save Time, Increase Efficiency

You'll save time and increase the efficiency of everyday tasks with Sharp OSA technology because it can be virtually seamless to the user. Any MX-C402SC and MX-B402SC Scan-Centric model anywhere in the organization can display choices that were once only available on a desktop PC. With one-touch access to business applications via Sharp OSA integration, you can start and finish a document distribution task without worry.

Complement Your Infrastructure

The Sharp OSA development platform is the logical choice as a complement to your existing infrastructure. Equipped with the MX-AMX2 **Application Communication** and MX-AMX3 **External Accounting Modules** which are standard on the Scan-Centric series, the MX-C402SC and MX-B402SC become the gateway to providing fast, flexible access to documents and applications... no matter where you are in the office. Optionally you can get the controlled access and tracking ability you require with tighter integration capabilities for network security and accounting applications. With such comprehensive control, you'll be able to manage your document workflow easily, efficiently, and more securely.

Customized Technology

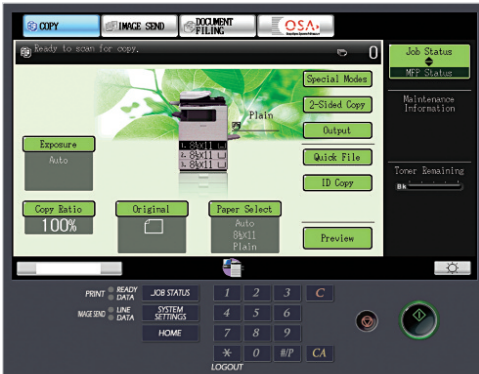
Sharp OSA technology also provides customization. With the ability to personalize applications and processes specific to your business, Sharp OSA technology can help eliminate redundancy and streamline workflow, helping to save time and optimize productivity. And since Sharp OSA technology utilizes industry-standard network protocols such as SOAP, XML, and XHTML, third party software developers can deliver customized solutions to your business faster than ever.

*Some features may require optional equipment and/or software.

ADVANCED DEVICE MANAGEMENT



Remote Device Management Suite



Remote Front Panel

Engineered with the user in mind, the MX-C402SC and MX-B402SC combine easy-to-use, integrated software with robust capabilities.

The Sharp Administration Utility Suite

Sharp's Administration Utility Suite takes management of your MX-C402SC and MX-B402SC to the next level. This easy-to-use software allows you to take control of the versatile system features and simplifies installation and management.

- With **Printer Status Monitor**, network users can view printer conditions, check paper levels, toner, and more—all through an easy-to-use interface.
- With **Sharp Remote Device Manager**, administrators can easily manage the setup, configuration, device settings, cloning and more! Advanced features such as **Remote Front Panel** allow administrators and support personnel to view and control the LCD panel of the machine remotely from virtually any PC on the network!* Plus, with the event-driven, real-time service alerts offered through Sharp's **Remote Device Management Suite**, administrators and supervisors can achieve much higher productivity. Now, it is easier than ever to view click counts, history reports and more.
- Experience the convenience of an **Embedded Web Page** right from your desktop! This advanced web-based management tool allows users to create and manage their own network scanning destinations, profiles and web-links. Administrators can access device settings, account information and security settings.

Take Charge of Usage and Costs

With Sharp's **device management system**, administrators and supervisors can define user groups on the MX-C402SC and MX-B402SC to manage and restrict features, such as copying, scanning or printing. Easily set up a custom user group to manage page counts (copy, print, scan or fax operations). The MX-C402SC and MX-B402SC can store **profiles for up to 1,000 users**.

24/7 Training with My Sharp

Managing all of the advanced features of your Sharp product is simple and easy. Ask your Authorized Sharp Dealer about **My Sharp**. This dedicated customer training website is customized to your MX-C402SC and MX-B402SC series document systems and allows you to locate resources and find information specific to your configuration, truly helping you maximize your investment.



*Some features may require optional equipment and/or software.

HEIGHTENED SECURITY

PRIVACY

AUTHORIZATION

CONFIDENTIALITY

PROTECTION

Innovative document and device protection helps ensure confidentiality.

To help protect your data, the MX-C402SC and MX-B402SC offer several layers of security, making Sharp the optimum choice to help protect employee privacy and intellectual property. As the leader in office equipment security, Sharp makes it easy for virtually any business or government entity to safely deploy digital copying, printing, scanning and faxing.



Authority Groups

Advanced account management enables administrators to set authority groups for access to features of the MX-C402SC and MX-B402SC. Administrators can control which department, for instance, has full access to copying, printing, scanning and/or fax. Walk up users enter a code, Local Name and Password, or LDAP User Authentication to access the features assigned to their group.



Data Erase and Encryption*

To help protect your data, the MX-C402SC and MX-B402SC offer an optional data security kit that encrypts document data using **AES (Advanced Encryption Standard) 256-bit encryption**. The data security kit erases the temporary memory on the hard drive by overwriting the encrypted data up to seven times, offering an unprecedented level of assurance. Additionally, the data security kits for these models comply to the IEEE-2600-2008 security standard for MFP devices. This standard specifies security requirements and provides a new international reference to assess contemporary MFP security.



Network Scanning Access Control

To help protect your network from unauthorized e-mail communications, the MX-C402SC and MX-B402SC support **User Authentication**, requiring users to login before performing any network scanning operations. Users can even login with a proximity or magnetic-stripe ID card when the optional Card Reader Mounting Kit is installed.



Control Device Access Over the Network

To help restrict access to the device over the network, the MX-C402SC and MX-B402SC offer IPsec, SMB and extended support for **SSL Encryption (Secure Sockets Layer)**, **IP/MAC address filtering**, IEEE 802.1x authentication, HID Card Reader Authentication support, protocol enable/disable and port management for maximum security.



Documents Remain Confidential

To help protect your printed documents from unauthorized viewing, the MX-C402SC and MX-B402SC offer encrypted PDF files for printing and scanning as well as **Confidential Printing** that requires users to enter a PIN code or use their Access Card in order to print a queued document. Additionally, **Secure Fax Release** ensures received fax documents are held in memory until an authorized user enters a PIN code. So compliance with healthcare regulations such as HIPAA is easier.



Tracking and Auditing Information

Legislation and industry policies require companies to be more aware of information flow from their offices. Sharp offers both built-in and additional hardware/software which allows users to control, access and track usage of each device on the network.

These scalable security offerings aim to protect your intellectual property, preserve confidential information and help your business to meet regulatory requirements, such as the Health Insurance Portability and Accountability Act (HIPAA), and the Gramm Leach Bliley Act (GLB). For additional information visit: www.sharppusa.com/security.

PRESERVATION

ENVIRONMENTAL COMMITMENT



Sharp's ongoing commitment to minimizing the environmental impact of the document systems it develops sets a high standard for the industry.



An Environmentally Responsible Approach to Product Design

The MX-C402SC and MX-B402SC utilize Sharp's advanced micro-fine toner technology, which offers a lower consumption rate and produces less waste than conventional toners, resulting in longer replacement intervals. Sharp supplies are packaged using fully recyclable materials. Long-life consumable parts help minimize service intervals and down time, resulting in lower operating costs. With two different energy saving modes, power can be reduced or shut off at set intervals. All Sharp document systems are RoHS compliant to restrict the use of hazardous substances.

Toner Recycling Program

As part of our commitment to helping preserve the environment, Sharp offers our customers zero waste land fill recycling for all Sharp consumables, including cartridges, bottles, toner collection containers and drum units. Sharp encourages customers to recycle their used Sharp toner cartridges in bulk by providing a pre-paid Recycling Kit for their return to our facility.

Environmental Leadership

As a testament to our commitment to the environment, Sharp is a three-time winner of the ENERGY STAR annual Excellence in Energy Proficiency Product Design. Sharp is also a four-time winner of the SmartWay® Excellence Award, which recognizes companies for conserving energy and lowering greenhouse gas emissions in logistics and transportation. Sharp was also a previous recipient of the Excellence in Partnership Green Contractor Award and the Evergreen Award from the General Services Administration (GSA) and the Coalition for Government Procurement. These awards recognize environmentally responsible businesses and their efforts on recycling, waste reduction and affirmative procurement practices.

Global Initiatives

Sharp is committed to environmental sustainability and corporate responsibility including planning, design, manufacturing, distribution and product end-of-life management. For more information about Sharp's environmental leadership including information about energy efficient products, electronics or toner cartridge recycling, please visit www.sharppusa.com/environment.

MX-C402SC/MX-B402SC SPECIFICATIONS

Main Specifications

MX-C402SC	Includes multi-tasking controller, Standard Copying, PostScript® 3/PCL™ 6, Network Printing, Network Scanning, 100-sheet Scan² DSPF, retractable QWERTY keyboard, 80 GB HDD with Document Filing system, W-VGA color touch panel, Auto Duplex, 500-sheet paper drawer and 100-sheet bypass, Sharp OSA® Application Communication & External Accounting modules.		
MX-B402SC			
Type:	MX-C402SC: Color multi-function digital document system MX-B402SC: Monochrome multi-function digital document system		
Functions	Copy, print, network print, network scan, document filing and fax¹		
Copy System	Dry electrostatic transfer/Dual component developer/Magnetic brush development/OPC drums/Heat Roller fusing/White LED		
Originals	Sheets, plastic cards, business cards, bound documents		
Max Original Size	8-1/2" x 14"		
Copy Size	Min: 5-1/2" x 8-1/2", Max: 8-1/2" x 14"		
Copy Speed	40 ppm (Letter)		
Multiple Copy	Max: 999 copies		
First Copy Time	MX-C402SC (Color)	MX-C402SC (B&W)	MX-B402SC
Platen Glass	8.5 seconds²	6.5 seconds²	6.5 seconds²
DSPF	9.5 seconds²	8.0 seconds²	8.0 seconds²
Warm-Up Time	MX-C402SC: 90 seconds or less MX-B402SC: 45 seconds or less		
Magnification	50% to 200% in 1% increments (50 - 200% for DSPF)		
Original Feed	Up to 100-sheet (paper) or approx. 172" stack (plastic card/business card) DSPF		
Scan Speed	Copy mode: Up to 50 ipm @ 600 X 300 dpi Scan mode: Up to 50 ipm @ 200 x 200 dpi		
Original Sizes	8-1/2" x 14" to 5-1/2" x 8-1/2", A4 to A5, 2-1/8" x 3-3/8" (card size), 3" x 6-1/8" (check size)		
Original Weights	1-sided: 9-13 lb. bond (thin paper), 13-32 lb. bond (plain paper), 129-280g/m² (heavy paper); 2-sided: 13-32 lb. bond (regular paper), 129-280g/m² (heavy paper); Plastic card: 0.84mm thickness or less		
Paper Feed System	Standard: 500-sheet paper drawer (Letter/Legal) and 100-sheet bypass tray (Letter/Legal) Optional: Up to 3 additional 500-sheet paper drawers (Letter/Legal)³		
Paper Types	Paper drawers: 16-28 lb. bond. Other types include: plain, pre-printed, recycled, pre-punched, letterhead, and color paper. Bypass Tray: 15-16 lb. (thin paper), 16-28 lb. bond (plain paper), 28 lb. bond-110 lb. index (heavy paper), 20-24 lb. (Monarch, Com-10, DL, and C5 envelopes). Other types include: label paper, gloss paper, pre-printed, recycled, pre-punched, letterhead, color paper, and OHP film.		
Duplexing	Standard automatic duplex copying, printing, and scanning		
CPU	MX-C402SC: Power QUICCIII-MPC8533E/1 GHz MX-B402SC: Power QUICCIII-MPC8533E/800MHz		
Interface	RJ-45 Ethernet (10Base-T/100Base-TX/1000Base-T), USB 2.0 (Host Port), USB 2.0 (Device Port)		
Memory	MX-C402SC: Standard 512 MB (copier), 1 GB (printer/network scanning) MX-B402SC: Standard 512 MB (copier), 512 MB (printer/network scanning)		
Hard Disk Drive	80 GB; 38 GB Main Folder/12 GB Custom/Quick Folder Document Filing System and electronic sorting		
Copy Resolution	600 dpi		
Exposure	Auto Modes: Text, Text/Printed-Photo, Text/Photo, Printed-Photo, Map, Light Original		
Photo, Control	Settings: Auto exposure control or 9 step manual exposure		
Halftone	256 gradations/2 levels (monochrome)		
Copy Features	Scan-Once-Print-Many, electronic sorting, offset stacking¹, Auto Exposure Selection (AES), Auto Paper Sensing (APS), Auto Magnification Sensing (AMS), Auto Tray Switching (ATS), Auto Shut-Off (ASO), rotation copy, reverse copy, pamphlet copy, margin shift, edge erase, preview, OHP insertion, job build, card shot, reverse image, black-white reversal, centering, proof copy, 2-in-1, 8 business cards layout, photo repeat, original count, document filing, account management, job programs, date/character/page stamp		
Account Control	Up to 1000 users. Supports user-number authentication (on device), login name/management, date/character/page stamp, Copy, Print, Scan, Fax and Document Management		
Output Tray Capacity	Main output tray (top): 250 sheets (face down) Heavy output tray (side): Approx. 1/2" stack (face up)		
Firmware Management	Flash ROM with local (USB); network update capability and firmware update 1 to N with Sharp Remote Device Manager (SRDM)		
Configuration Method	Web-based management system with user/administrator level login security, cloning (1 to N) with Sharp Remote Device Manager (SRDM) and Remote Front Panel access		

Service/Maintenance	Sharp Remote Device Manager (SRDM) and Remote Front Panel access to service logs, click counts, diagnostic data, and service alerts.
Power	AC 100-127 VAC, 60Hz, 12A
Power Consumption	Max: 1.44kW or less
Weight	MX-C402SC: Approx. 127.6 lbs. (base model) including supplies MX-B402SC: Approx. 107.8 lbs. (base model) including supplies
Dimensions	22-3/64" x 19-29/64" x 31-1/16"

Network Printing System (Standard)

PDL	MX-C402SC: PCL5c, PCL6, PostScript 3 compatible, XPS¹ MX-B402SC: PCL5e, PCL6, PostScript 3 compatible, XPS¹		
Resolution	1200 dpi, 600 dpi		
Print Speed	40 ppm (Letter)		
Print Drivers	CD-ROM: Windows 2000, Windows XP, Windows Server® 2003, Windows Vista®, Windows 7, Windows Server 2008, MAC OS® OS-X (including 10.4.11, 10.5-10.5.8, 10.6-10.6.2), all MAC PPD. Via Download: Windows Server 2008R2, MAC OS 9.0-9.2.2, OS-X 10.2.8, 10.3.9		
Print Features	Continuous printing, duplex printing, pamphlet printing, N-up printing, image rotation, different cover page/last page, blank page skip, transparency inserts, carbon copy print mode, fit-to-page, poster print, margin shift, mirror image, watermarks, overlay, confidential print, confidential batch print, print hold, bypass printing, job priority printing and direct printing.²		
Direct Printing	File Types: TIFF, JPEG, PCL, PRN, TXT, PDF, Encrypted PDF, Postscript and XPS¹ Methods: FTP, Web Page, E-mail and USB Memory		
Resident Fonts	80 outline fonts		
Interface	RJ-45 Ethernet 10Base-T/100Base-TX/1000Base-T		
Operating Systems	Windows 2000, XP, Server 2003/2008, Vista, 7, MAC OS-9.0, MAC OS-X, Novell® Netware® 3x, 4x, 5x, Sun® OS 4.1x, Solaris® 2x, UNIX, Linux, Citrix® (Metaframe, Presentation Server 4, 4.5) and Windows Terminal Services		
Network Protocols	TCP/IP (IPv4, IPv6, IPSEC) SSL (HTTP, IPP, FTP), SNMPv3, 802.1x for Windows and UNIX. LPD and LPR for UNIX. IPX/SPX® for Novell environments. EtherTalk® and NetBEUI, AppleTalk for Macintosh® environments.		
Printing Protocols	LPR, IPP, IPPS, PAP, Raw TCP (port 9100), FTP and Novell Pserver/Rprinter		
Network Security	IP/Mac address filtering, protocol filtering, port management, user authentication and document administration.		
Security Standards	IEEE 2600-2008, DoD (NSTISSP) #11, DoD Directive 8500.2, DoD (DISA)		

Network Scanning System (Standard)

Max Original Size	Platen Glass: 8-1/2" x 11"
Size	DSPF: 8-1/2" x 19-5/8" (long-size mode)
Optical Resolution	600 dpi
Output Modes	600 dpi, 400 dpi, 300 dpi, 200 dpi, 100 dpi
Scan Modes	Color, monochrome, grayscale
Scan Features	Scan² technology, plastic/business card feeding, card shot, job build, original count, blank page skip, preview, drop out color, suppress background, timer transmission
Image Formats	Monochrome: TIFF, PDF, Encrypted PDF, XPS¹ Color/Grayscale: Color TIFF, JPEG, PDF, Encrypted PDF, XPS¹ Internet Fax: TIFF-FX, FIFF-F, TIFF-S¹
Image Compression	Monochrome Scanning: Uncompressed, G3 (MH), G4 (MR/MMR) Color/Grayscale: JPEG (High, middle, low) Internet Fax mode: MH/MMR (option)
Scan Destinations	E-mail, Desktop, FTP, Folder (SMB), USB, Internet fax (option), Super G3 fax (option)
One-Touch Destinations	Up to 999 (combined scan destinations)
Group Destinations	Up to 500
Program	48 (combined)
Max. Jobs in Memory	Up to 94
Network Protocols	TCP/IP and SSL (Includes HTTP, SMTP, LDAP, FTP, POP3), SMB, ESMTP and 802.1x
Network Security	E-mail server user authentication for LDAP and Active Directory
Software	Sharpdesk® document management software (1 user license) Sharp OSA® development platform

B&W Super G3 Fax Kit (Option)

Transmission Mode	Super G3, G3
Modem Speed	33.6 KBPS⁴
Compression Methods	JBIG, MMR, MR, MH
Scanning Method	Sheet fed simplex or duplex or book
Max Transmit Resolution	400 dpi
Transmit Speed	Approx. 2 seconds with Super G3/JBIG⁵
Auto Dialing	Up to 999 (combined scan destinations)
Group Dial/Destinations	Up to 500
Inbound Fax Routing	Forwards received fax data to E-mail, FTP, Desktop, SMB
Long Length Originals	Up to 19-5/8" (for transmission)
Programs	48 (combined)
Memory	8 MB (exclusive)
Halftone	256 levels
Fax Features	Quick on-line transmission, direct transmission, F-Code transmission/reception, rotate transmission, timer transmission, anti-junk fax reception, automatically staple received faxes, secure fax release, out of paper memory reception, auto redial, duplex reception transaction reports, activity reports and PC Fax.

Inner Finisher (Option)

Type	Built-in Finisher
Output Capacity	Up to 280 sheets (Letter/Legal), 20 envelopes
Output Delivery	Face down
Stapling Media	Plain/Thin/Heavy/Recycled/Letterhead/Pre-punched/Colored/Preprinted paper
Stapling Positions	Single corner position
Power Source	Supplied from the main unit
Stapling	30 sheets Letter/Legal
Stapled Sets	10 bundles or 300 sheets (Letter/Legal)
Weight	Approx. 19.8 lbs.
Dimensions	18-2/3" x 13-1/16" x 6-3/16" When tray is extended: 20-1/2" x 13-1/16" x 6-3/16"

Optional Equipment

MX-FN12	Inner Finisher
MX-CSX1	500-sheet Paper Feed Unit for Tray 2
MX-CSX2	500-sheet Paper Feed Unit for Trays 3 & 4
MX-DS13	Base Plate
MX-DS14	Stackable Cabinet
MX-PUX1	XPS Expansion Kit (Requires MX-SHP1GBXPS)
MX-SHP1GBXPS	Expansion Memory 1 GB (Required for MX-PUX1)
AR-PF1	Bar Code Font Kit
MX-FXX3	Fax Expansion Kit
MX-FWX1	Internet Fax Expansion Kit
DVENDFS	Vendor Cable Kit
DCL310S	CAC External Option
MX-FR27U	Commercial Data Security Kit (MX-B402SC)
MX-FR28U	Commercial Data Security Kit (MX-C402SC)
MX-CFCRM1	Card Reader Mounting Kit
MX-AMX1	Application Integration Module

Supplies MX-C402SC

MX-C40NTB	Black Toner Cartridge
MX-C40NTC	Cyan Toner Cartridge
MX-C40NTM	Magenta Toner Cartridge
MX-C40NTY	Yellow Toner Cartridge
MX-C40NVB	Black Developer Cartridge
MX-C40NVC	Cyan Developer Cartridge
MX-C40NVM	Magenta Developer Cartridge
MX-C40NVY	Yellow Developer Cartridge
MX-C40NRB	Black Drum Cartridge
MX-C40NRS	Color Drum Cartridge
MX-C31HB	Toner Collection Container
MX-SCX1	Staple Cartridge (3 cartridges per carton)

Supplies MX-B402SC

MX-B42NT1	Black Toner Cartridge
MX-B42NV1	Black Developer
MX-C40NRB	Black Drum Cartridge
MX-B40HB	Toner Collection Container
MX-SCX1	Staple Cartridge (3 cartridges per carton)

¹ Some features may require optional equipment and/or software
² Specification may vary depending on product configuration, machine settings and operating and/or environmental conditions
³ Paper capacity is based on letter size paper
⁴ Actual transmission time will vary based on line conditions
⁵ Based on Sharp Standard Test Chart with approximately 700 characters, letter size in standard resolution



SHARP ELECTRONICS CORPORATION
1 Sharp Plaza, Suite 1
Mahwah, NJ 07495-1123
1-800-BE-SHARP • www.sharpsusa.com

Design and specifications subject to change without notice. Sharp, Sharp OSA, Sharpdesk, My Sharp, and all related trademarks are trademarks or registered trademarks of Sharp Corporation and/or its affiliated companies. Windows, Windows Server and Windows Vista are trademarks or registered trademarks of Microsoft Corporation. All other trademarks are the property of their respective owners.

