

KONICA MINOLTA

# *PARTS GUIDE MANUAL*

---

*MAY 2016*

*PC-415*  
*A9HF003*

## INFORMATION FOR PARTS GUIDE MANUAL

To find correct Parts No., refer to the "HOW TO MAKE THE BEST USE OF THIS MANUAL" in the following page.

### HOW TO MAKE THE BEST USE OF THIS MANUAL

- 1 When you order, please check the proper figures beforehand that are on Our Parts Guide Manual, and order with the appropriate figures.
- 2 For screws, Nuts, Washers, retaining rings and Pins which are used in this model, one letter is shown on the Standard parts column of Parts list and exploded diagrams.
- 3 In order to maintain safety of the product, some specific parts composed of this product are set up as "essential safety parts".
- 4 The assigned parts number for the "essential safety parts" is indicated as "SP00-\*\*\*\*".  
When replacing these parts, follow precautions for disassembling and installing which are listed in the Service Manual.  
Do not use any parts that are not set up as
- 5 ♣ means that there are exclusive parts for each destination.  
Please check the appropriate destination when you order.
- 6 Revision Mark  
Marked as ▲ on the illustration shows that the revision has been made.
- 7 All rights reserved. (any reprints or quotations are prohibited.)  
Use of this parts guide manual should be strictly supervised to avoid disclosure of confidential information.

## パーツガイドマニュアルのご案内

サービス部品をご発注の際には、下記に示す“パーツガイドマニュアルの活用にあたって”をご参照の上、正しい部品番号にてお願い致します。

### パーツガイドマニュアルの活用にあたって

- 1 部品発注の際には、掲載されている部品番号の桁数を確認し、掲載されている桁数で発注願います。
- 2 この製品に使用されているネジ、ナット、ワッシャー、止め輪、ピンなどは、リストの右側の Standard parts 欄に a,b,c,……で表示し、イラストにも a,b,c,……表示してあります。
- 3 製品の安全性を維持する為に、製品に使用される特定の部品を「重要保安部品」として設定しています。
- 4 重要保安部品の部品番号は、“SP00-\*\*\*\*”と記載されていますので、部品交換時は、サービスマニュアル記載の分解・組み立ての注意事項に従って作業をして下さい。  
また、指定以外の部品は一切使用しないで下さい。
- 5 本文に ♣ が表示されている部品は、仕向け地毎に専用部品がある事を意味しています。  
オーダーされる時は、仕向け地を確認して下さい。
- 6 改訂記号について  
イラスト上に▲印が表示されている部分は、改訂された事を表します。
- 7 著作権所有（無断転載及び無断引用の禁止）  
本パーツガイドマニュアルについては、機密保持等その扱いには十分注意して下さい。万一取り扱いを誤った場合には、法律で処罰されることがあります。

# CONTENTS

No.	DESCRIPTION	名称	PAGE No.
1	External Parts Section	外装部	P1
2	Frame Section	フレーム部	P2
3	Paper Feed Drive Section	駆動部	P3
4	Paper Transport Section	搬送部	P4
5	Paper Take-up Section	給紙部	P5 P6 P7
6	Paper Tray Section	給紙トレイ部	P8 P9 P10 P11
7	Wiring Accessories and Jigs	配線部品・治具	P12
8	Accessory Parts	同梱部品	P13

# INDEX

Parts No.	Page No.
1052540901	9-9
1075370813	9-11
1075375501	9-8
4030301703	7-10
4036254901	10-10
4061101000	1-3
4131300301	5-10
4131300301	6-8
4131353202	5-4
4131353202	6-7
4163529301	11-22
4348202401	1-8
4348305301	4-8
4349164101	4-12
4425371501	9-2
4425374202	11-16
4425374701	11-18
4425377001	9-1
4444350801	11-15
A00J663200	10-6
A00JH00D00	1-5
A02E560800	6-21
A02E561100	6-12
A093104001	13-3
A093940800	1-13
A093H00100	2-13
A093M60000	2-1
A0ED563900	7-5
A0ED623400	2-8
A0EDM50100	6-3
A0XW608300	13-4
A0XW616000	4-9
A108213800	5-14
A161103901	2-6
A161561600	6-5
A161562000	6-17
A161562101	6-18
A161562300	6-15
A161562400	6-9
A161562500	6-19

Parts No.	Page No.
A161562600	6-16
A161562800	6-11
A161563300	7-8
A161563400	7-4
A161567300	6-20
A161567400	6-22
A161623400	11-7
A161626000	8-12
A161626100	8-18
A161626200	8-17
A161626602	8-10
A161626800	8-7
A161626900	8-15
A161815300	4-7
A161815400	4-5
A161815500	4-4
A2XM561002	1-10
A2XM561101	2-9
A2XM561301	5-9
A2XM562100	2-5
A2XM562700	2-3
A2XM562802	2-7
A2XM562901	2-4
A2XM563102	4-1
A2XM563401	4-2
A2XM563600	4-10
A2XM563701	4-6
A2XM563900	4-3
A2XM564000	4-11
A2XM565100	6-24
A2XM565200	6-10
A2XM565300	7-1
A2XM565400	6-26
A2XM565600	6-2
A2XM565700	6-4
A2XM566402	6-6
A2XM566501	6-1
A2XM566702	7-7
A2XM566902	7-9
A2XM567401	7-2

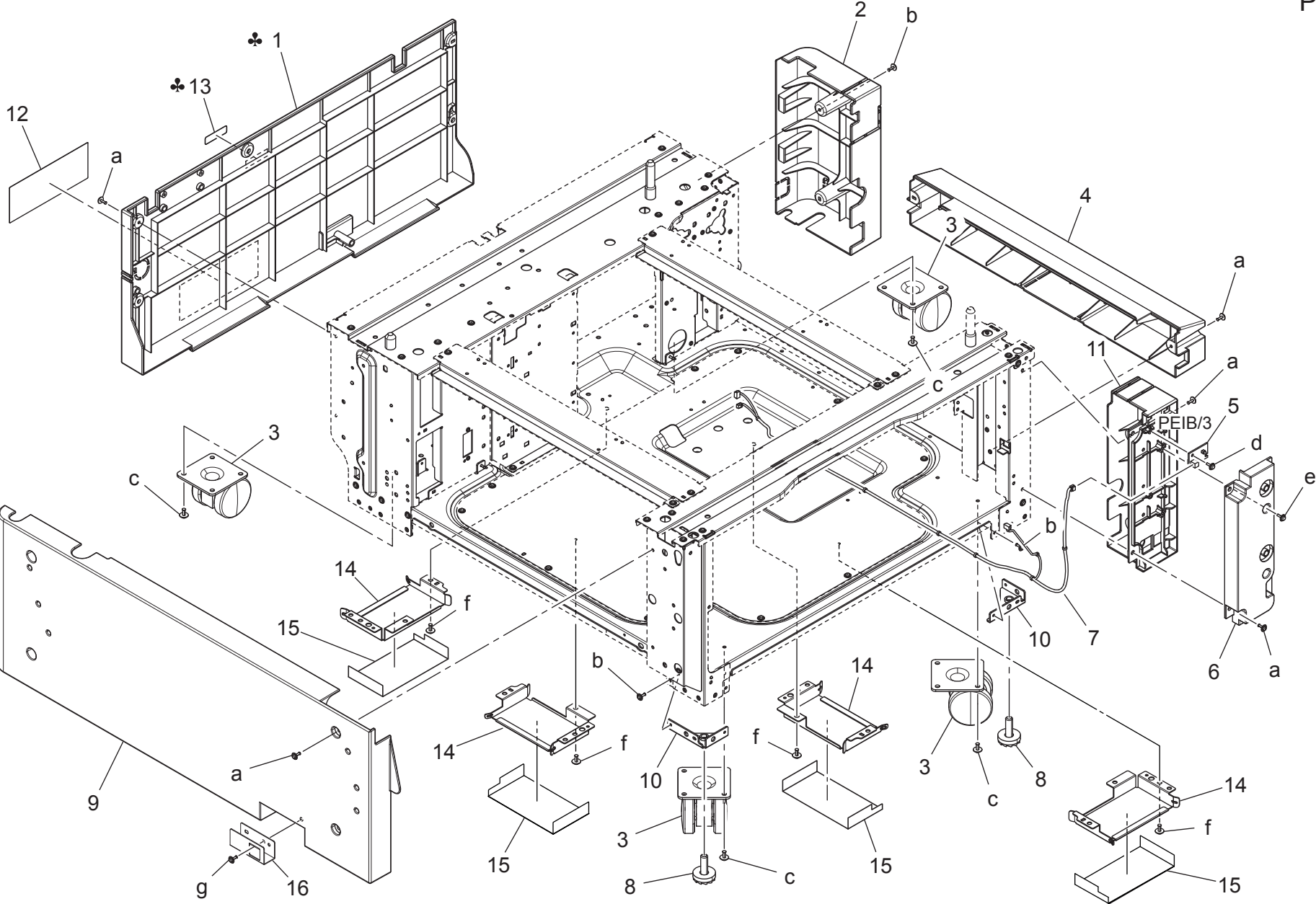
Parts No.	Page No.
A2XM567500	7-3
A2XM568700	8-14
A2XM569201	8-5
A2XM570100	1-9
A2XM570201	1-1
A2XM570301	1-2
A2XM570400	1-4
A2XM570500	1-6
A2XM570600	1-11
A2XM570802	1-1
A2XM572202	1-14
A2XM572300	1-15
A2XM590501	3-10
A2XM590901	3-6
A2XM591002	5-5
A2XM591500	3-5
A2XM591600	3-11
A2XM592200	3-8
A2XM592200	5-12
A2XM592300	5-11
A2XM592400	5-1
A2XM592500	5-3
A2XM592602	5-2
A2XM593500	5-7
A2XM595401	3-3
A2XM597501	10-8
A2XM597601	10-14
A2XM597700	10-12
A2XM598100	10-11
A2XM620107	11-19
A2XM620200	9-17
A2XM620301	8-3
A2XM620401	9-12
A2XM620501	9-7
A2XM620600	9-14
A2XM620700	9-24
A2XM620800	9-13
A2XM620900	9-22
A2XM621000	9-23
A2XM621100	8-2

Parts No.	Page No.
A2XM621202	8-1
A2XM621400	11-11
A2XM621500	11-9
A2XM621600	11-10
A2XM621702	11-8
A2XM621801	11-20
A2XM621901	9-22
A2XM622000	9-17
A2XM622100	9-10
A2XM622201	9-15
A2XM622300	10-5
A2XM622400	10-3
A2XM622500	10-9
A2XM622600	10-2
A2XM622700	10-1
A2XM622800	9-21
A2XM622901	9-16
A2XM623000	11-12
A2XM623100	10-4
A2XM623300	11-17
A2XM623500	10-7
A2XM623601	11-5
A2XM623701	11-5
A2XM623800	11-6
A2XM623900	11-23
A2XM624100	9-19
A2XM624200	9-20
A2XM624301	9-18
A2XM625100	11-26
A2XM625200	11-3
A2XM625300	11-1
A2XM625400	9-25
A2XM625400	11-14
A2XM625500	9-26
A2XM625500	11-13
A2XM625600	11-2
A2XM626102	8-16
A2XM626200	8-9
A2XM626500	8-8
A2XM626602	8-4

Parts No.	Page No.
A2XM626704	8-11
A2XM626800	8-13
A2XM626900	8-6
A2XM627100	11-24
A2XM627200	11-21
A2XM628100	9-6
A2XM628200	9-3
A2XM631800	3-12
A2XM631900	3-9
A2XM632000	3-7
A2XM632100	3-13
A2XM940100	8-19
A2XM940300	8-20
A2XM940400	8-20
A2XM940500	9-4
A2XM941101	9-27
A2XM941200	9-28
A2XM942301	1-12
A2XMG57100	5-8
A2XMG60000	10-13
A2XMH00301	2-11
A2XMM10100	3-1
A2XMM11000	3-4
A2XMN10001	2-15
A2XMN10101	2-10
A2XMN10200	5-13
A2XMN10500	11-25
A2XMN10600	6-25
A2XMN10B02	1-7
A2XMN10E00	2-14
A2XMN10H00	3-2
A2XMR70011	2-2
A2XMR72111	13-1
A3EP957100	1-16
A5C1628100	8-21
A5C1M50100	2-16
A5C1M50100	6-23
A5C1M50100	9-5
A5C1M50100	11-4
A5C1R90000	5-6

<b>Parts No.</b>	<b>Page No.</b>
A64J564101	6-13
A64J564101	7-6
A64J564201	6-14
A7VA561100	2-17
A7VA564400	2-19
A7VA571200	2-18
V116040804	13-2
V500010082	12-1
V500010083	12-2
V500020098	12-3
V500020099	12-4
V502010033	2-12
V570010021	12-5
V570010026	12-6

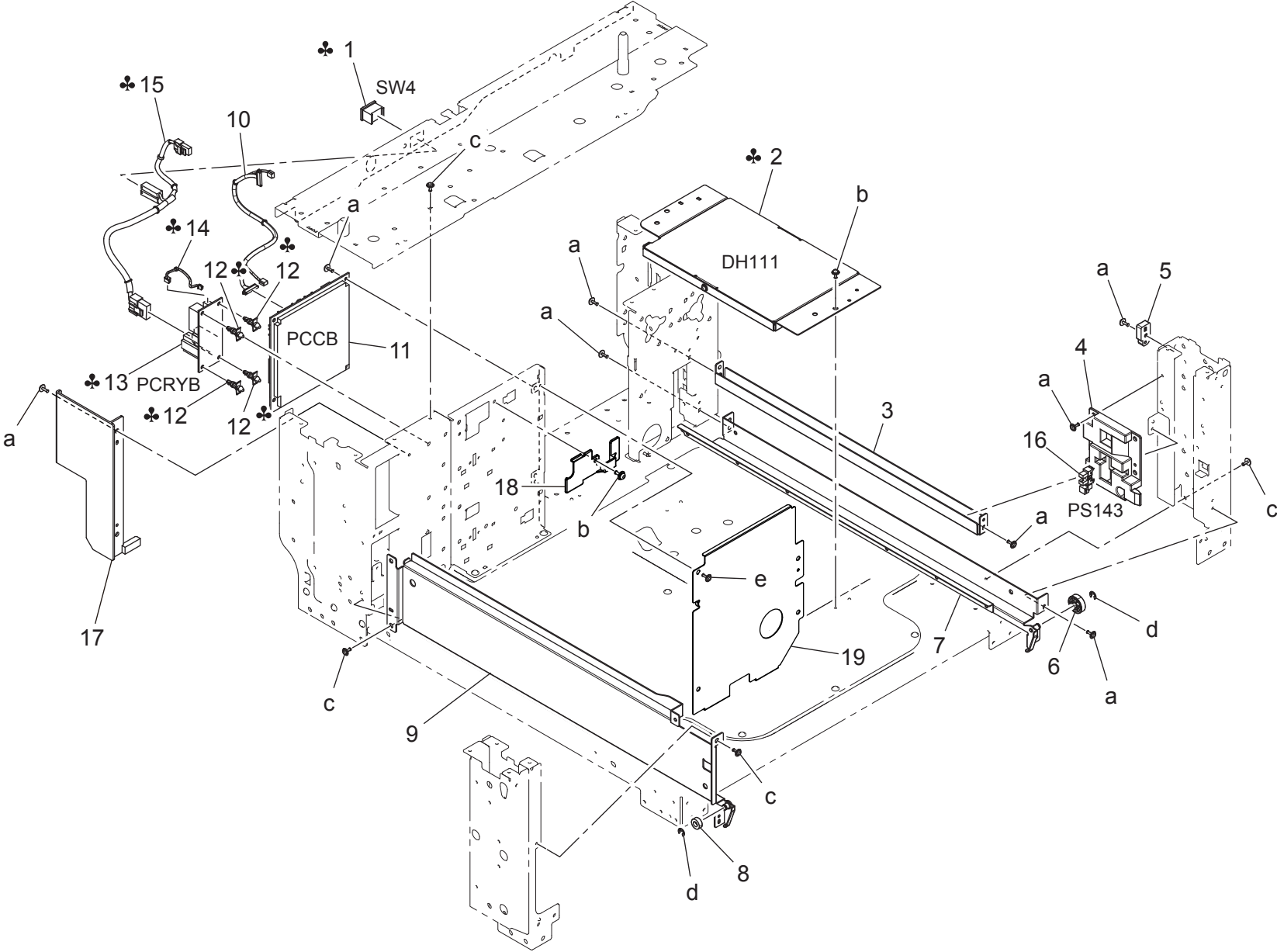
External Parts Section



External Parts Section

Key	Part No.	Description	Destinations	Class	QTY	Standard parts
1	A2XM570201	Cover /Rear	A,A1	C	1	a-V137030804 b-V137030803 c-V143040803 d-V153030803 e-V153030804 f-V144030603 g-V116031603
1	A2XM570802	Cover /Rear	B,C,D1,D3,E,F2,G1,G 2,I,K	C	1	
2	A2XM570301	Cover /Right rear		C	1	
3	4061101000	Castor		C	4	
4	A2XM570400	Cover /Right		C	1	
5	A00JH00D00	PWB Assembly LED1		C	1	
6	A2XM570500	Cover		C	1	
7	A2XMN10B02	Indicating Wiring /1		D	1	
8	4348202401	ADJUSTING PLATE		D	2	
9	A2XM570100	Cover /Left		C	1	
10	A2XM561002	Mounting Plate		D	2	
11	A2XM570600	Cover /Right front		C	1	
12	A2XM942301	Label		C	1	
13	A093940800	Label	A,A1	C	1	
14	A2XM572202	Mounting Plate		D	4	
15	A2XM572300	Seal		C	4	
16	A3EP957100	Mounting Plate		D	1	

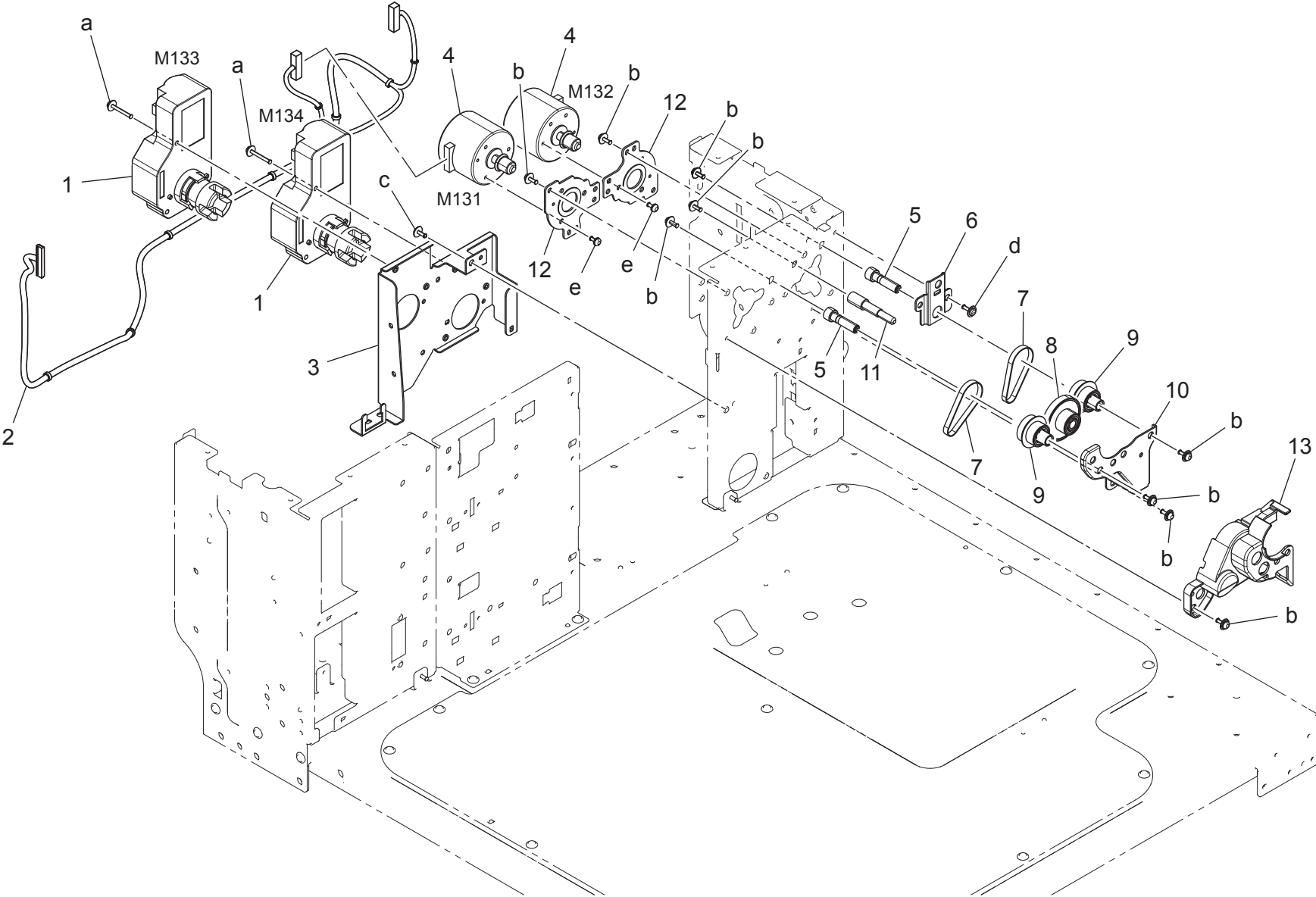
Frame Section





Key	Part No.	Description	Destinations	Class	QTY	Standard parts
1	A093M60000	Rocker switch	A,A1	C	1	a-V137030803 b-V116030803 c-V144030803 d-V217040001 e-V116030603
2	A2XMR70011	Heater Assy	A,A1	D	1	
3	A2XM562700	Rail		D	1	
4	A2XM562901	Holder		D	1	
5	A2XM562100	Holder		D	1	
6	A161103901	Roll		D	1	
7	A2XM562802	Rail		D	1	
8	A0ED623400	Roll		D	1	
9	A2XM561101	Rail		D	1	
10	A2XMN10101	Main body Relay harness		C	1	
11	A2XMH00301	PWB Assembly(PWB-CB_L ASSY)	基板 ASSY (PWB-CB_L ASSY)	I	1	
12	V502010033	spacer	サーキット ボードスペーサー	D	4	
13	A093H00100	PWB Assy	基板 ASSY	C	1	
14	A2XMN10E00	Heater Wiring	ヒーター束線 (国内2次)	D	1	
15	A2XMN10001	Heater Relay harness	ヒーター中継束線 (国内一次)	D	1	
16	A5C1M50100	Photointerrupter	透過型センサ	B	1	
17	A7VA561100	Cover	カバー	D	1	
18	A7VA571200	Cover	蓋	D	1	
19	A7VA564400	Mounting Plate	取付板	D	1	

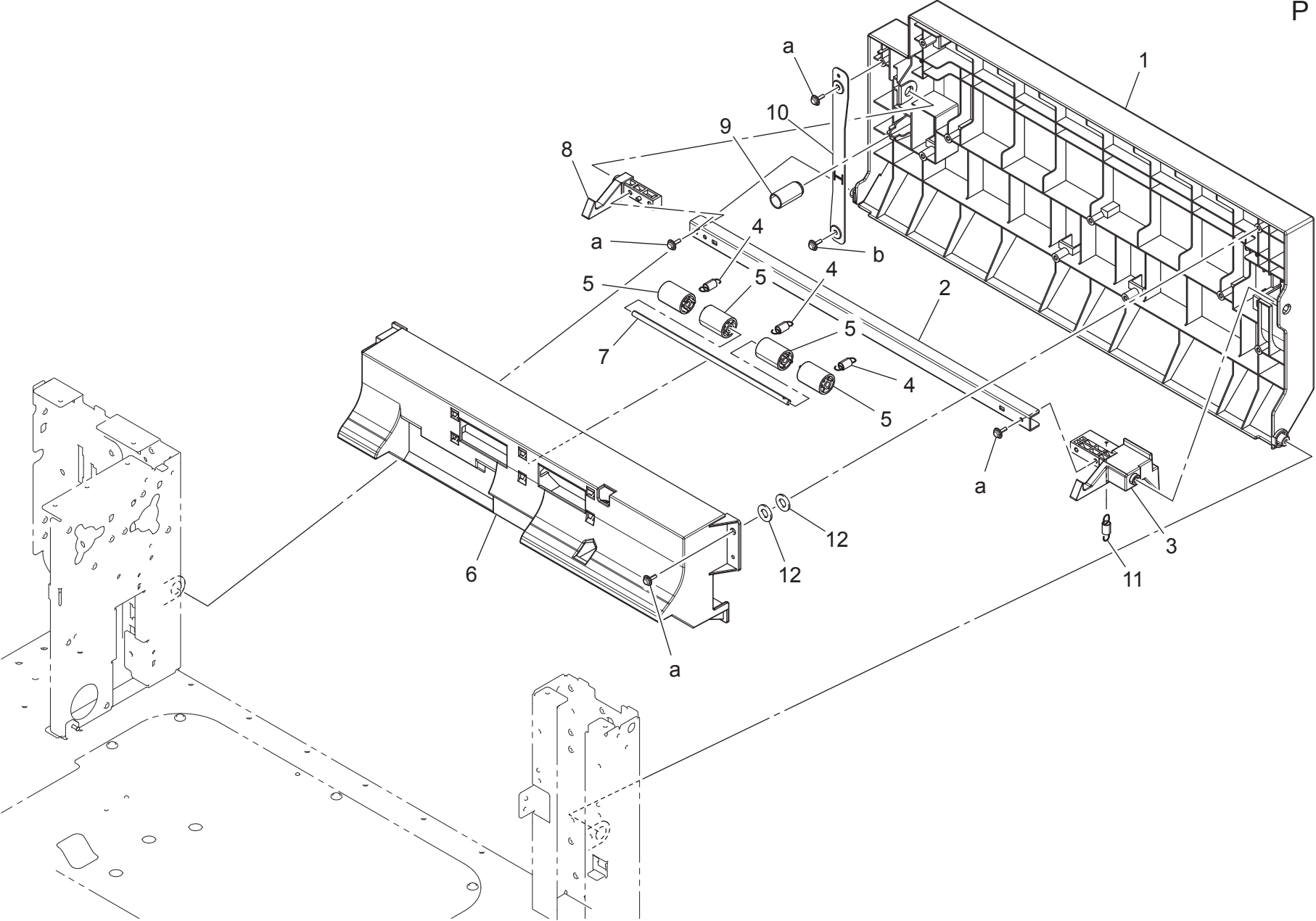
Paper Feed Drive Section



# Paper Feed Drive Section

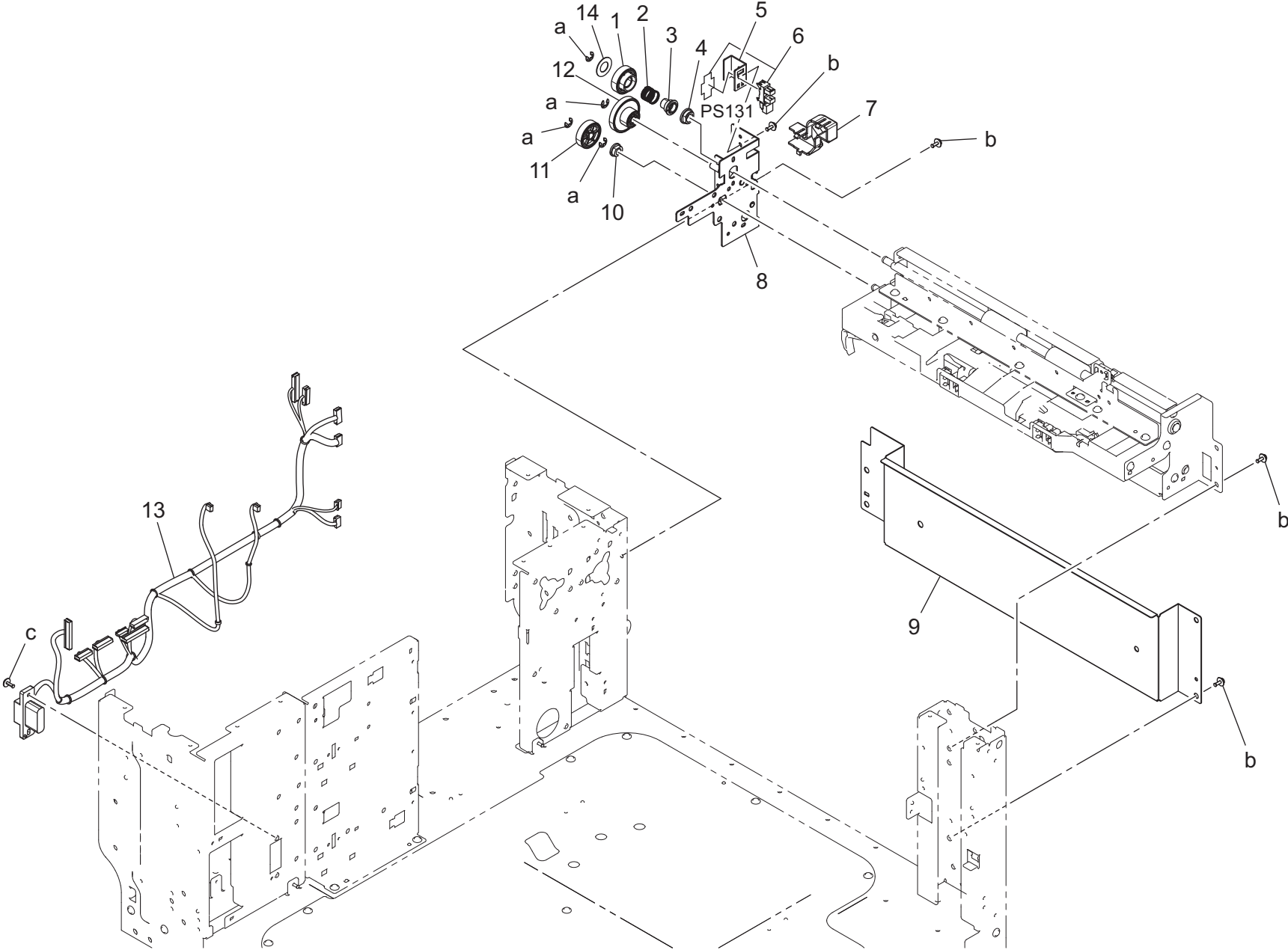
Key	Part No.	Description	Destinations	Class	QTY	Standard parts
1	A2XMM10100	brush Motor		C	2	a-V116032003 b-V116030803 c-V144030803 d-V137030803 e-V115030403
2	A2XMN10H00	Drive Wiring /1		D	1	
3	A2XM595401	Mounting Plate		D	1	
4	A2XMM11000	Brushless Motor		C	2	
5	A2XM591500	Shaft		C	2	
6	A2XM590901	Mounting Plate		D	1	
7	A2XM632000	Belt 103L		C	2	
8	A2XM592200	Gear		C	1	
9	A2XM631900	Pulley 18/64T		C	2	
10	A2XM590501	Mounting Plate		D	1	
11	A2XM591600	Shaft		C	1	
12	A2XM631800	Mounting Plate		D	2	
13	A2XM632100	Cover		D	1	

Paper Transport Section



Key	Part No.	Description	Destinations	Class	QTY	Standard parts
1	A2XM563102	Door		C	1	a-V153030803 b-V116030803
2	A2XM563401	Connecting Plate		D	1	
3	A2XM563900	Lock		C	1	
4	A161815500	Pulling Spring		C	3	
5	A161815400	Roll		C	4	
6	A2XM563701	Guide		C	1	
7	A161815300	Shaft		D	1	
8	4348305301	PAWL		C	1	
9	A0XW616000	Compressing Coil spring		C	1	
10	A2XM563600	Band		C	1	
11	A2XM564000	Pulling Coil spring		C	1	
12	4349164101	WASHER		C	2	

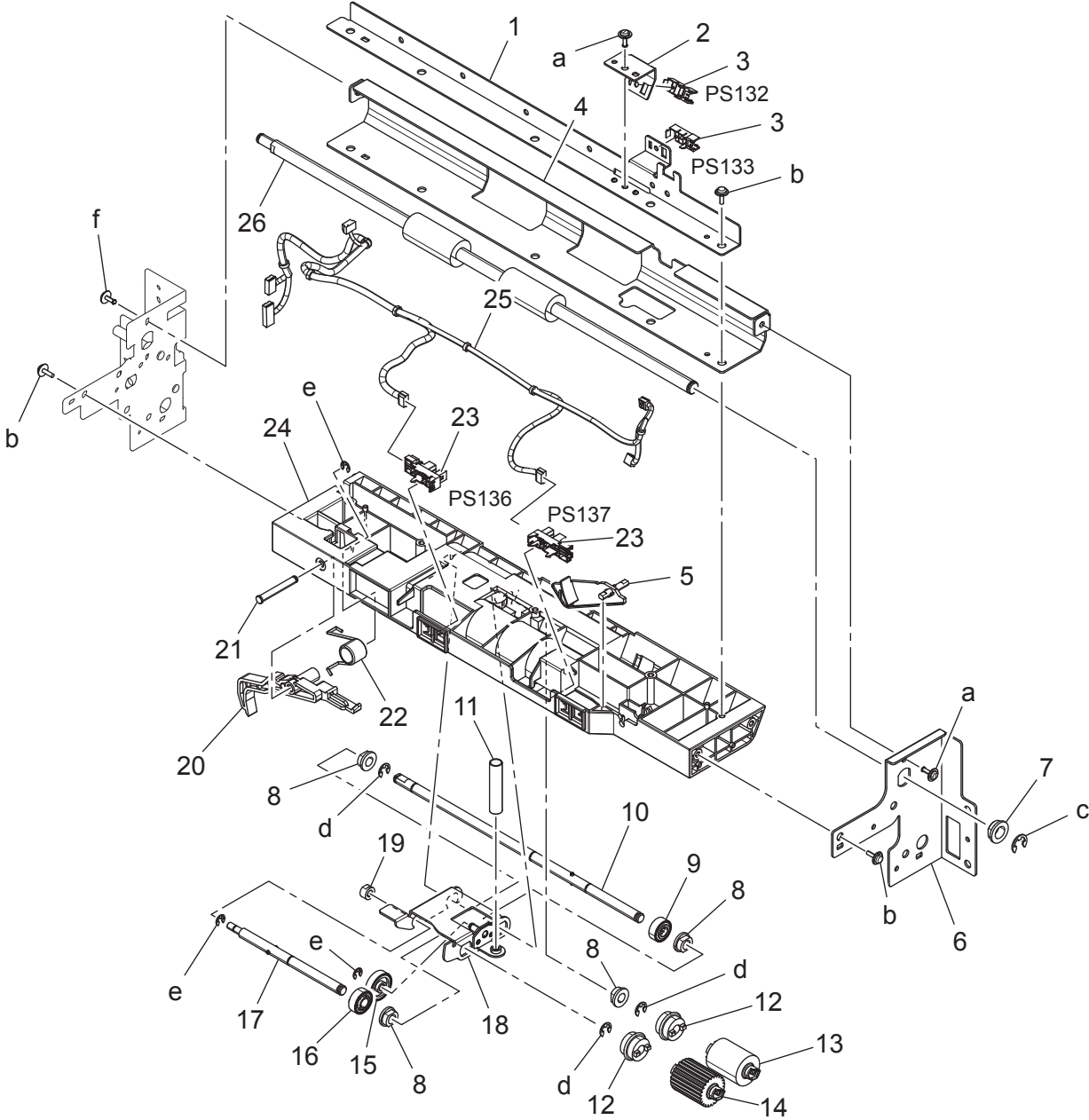
Paper Take-up Section



Paper Take-up Section

Key	Part No.	Description	Destinations	Class	QTY	Standard parts
1	A2XM592400	Gear		C	1	a-V217040001 b-V116030803 c-V137030803
2	A2XM592602	Spring		C	1	
3	A2XM592500	Guide		C	1	
4	4131353202	BUSHING		C	1	
5	A2XM591002	Mounting Plate		D	1	
6	A5C1R90000	Photo Interrupter		B	1	
7	A2XM593500	Cover		D	1	
8	A2XMG57100	LCT FRAME ASSY		D	1	
9	A2XM561301	Cover		D	1	
10	4131300301	BUSHING		C	1	
11	A2XM592300	Gear		C	1	
12	A2XM592200	Gear		C	1	
13	A2XMN10200	Paperfeed Relay harness /1		D	1	
14	A108213800	Washer		D	1	

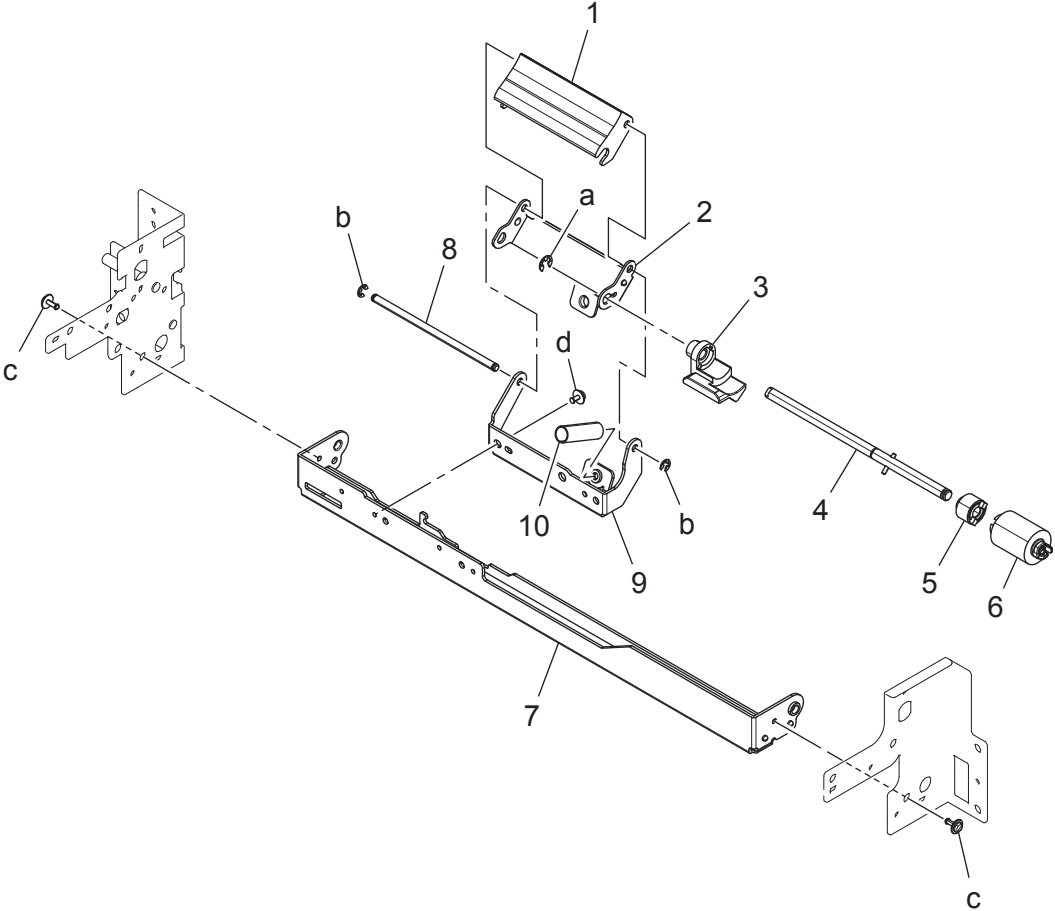
Paper Take-up Section





Key	Part No.	Description	Destinations	Class	QTY	Standard parts
1	A2XM566501	Reinforce Plate		D	1	a-V137030803 b-V153030803 c-V217060001 d-V217040001 e-V217030001 f-V144030803
2	A2XM566500	Mounting Plate		D	1	
3	A0EDM50100	Photorelector		I	2	
4	A2XM565700	Conveyance Guide		C	1	
5	A161561600	Actuator		C	1	
6	A2XM566402	Frame		D	1	
7	4131353202	BUSHING		C	1	
8	4131300301	BUSHING		C	4	
9	A161562400	Gear 26T		C	1	
10	A2XM565200	Shaft		C	1	
11	A161562800	Compressing Coil spring		C	1	
12	A02E561100	Clutch		C	2	
13	A64J564101	Paper feed Roller		A	1	
14	A64J564201	Paper feed Roller		A	1	
15	A161562300	Gear 34T		C	1	
16	A161562600	Gear 28T		C	1	
17	A161562000	Shaft		D	1	
18	A161562101	Holder		D	1	
19	A161562500	Bushing		C	1	
20	A161567300	Lever		C	1	
21	A02E560800	Shaft		D	1	
22	A161567400	Torsion Spring		C	1	
23	A5C1M50100	Photointerrupter		B	2	
24	A2XM565100	Frame		D	1	
25	A2XMN10600	Conveyance Detection harness /1		D	1	
26	A2XM565400	Drive Roller		C	1	

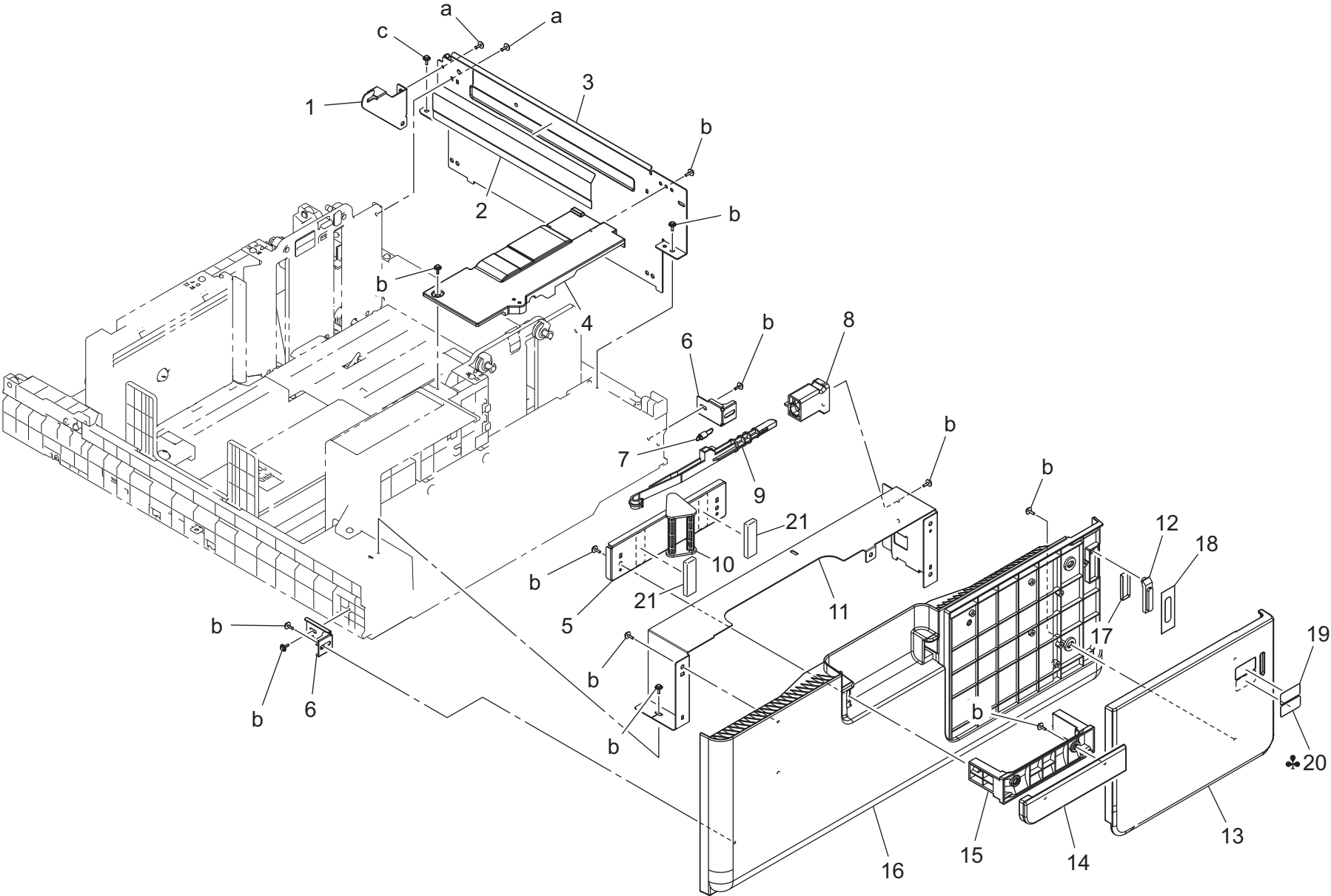
Paper Take-up Section



Paper Take-up Section

Key	Part No.	Description	Destinations	Class	QTY	Standard parts
1	A2XM565300	Guide		D	1	a-V217040001 b-V217030001 c-V144030803 d-V116030603
2	A2XM567401	Holder		C	1	
3	A2XM567500	Guide		D	1	
4	A161563400	Shaft		D	1	
5	A0ED563900	Torque limiter		C	1	
6	A64J564101	Paper feed Roller		A	1	
7	A2XM566702	Mounting Plate		D	1	
8	A161563300	Shaft		D	1	
9	A2XM566902	Mounting Plate		D	1	
10	4030301703	PRESSURE SPRING		C	1	

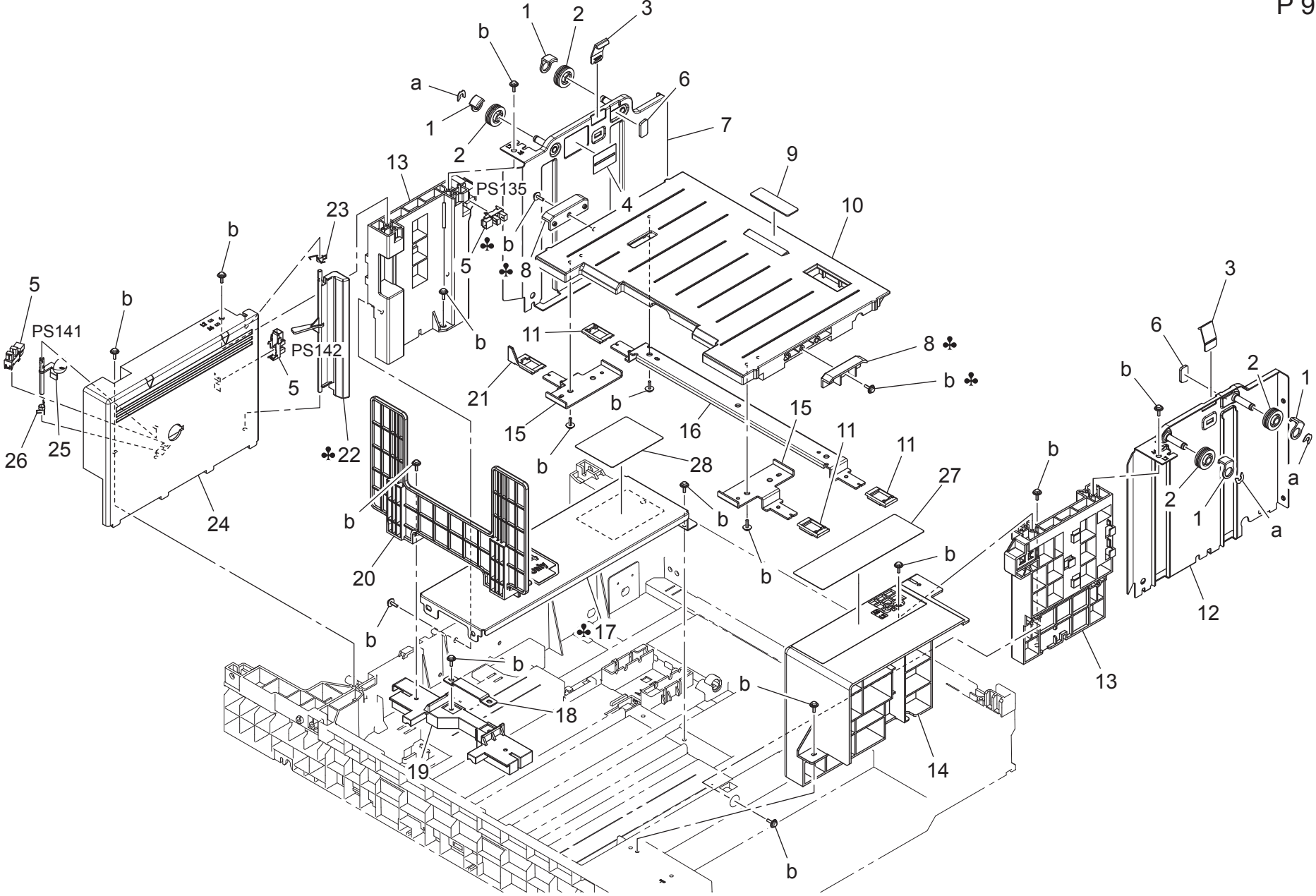
Paper Tray Section



Paper Tray Section

Key	Part No.	Description	Destinations	Class	QTY	Standard parts
1	A2XM621202	Reinforce Plate		D	1	a-V137030803 b-V153030803 c-V153031003
2	A2XM621100	Guide		D	1	
3	A2XM620301	Regulating Plate		D	1	
4	A2XM626602	Cover		D	1	
5	A2XM569201	Holder		D	1	
6	A2XM626900	Mounting Plate		D	2	
7	A161626800	Pulling Coil spring		C	1	
8	A2XM626500	Mounting Part		D	1	
9	A2XM626200	Lock Lever		C	1	
10	A161626602	Lever		C	1	
11	A2XM626704	Cover		D	1	
12	A161626000	Lens		D	1	
13	A2XM626800	Cover		C	1	
14	A2XM568700	Cover		C	1	
15	A161626900	Handle		C	1	
16	A2XM626102	Cover		C	1	
17	A161626200	Sheet		D	1	
18	A161626100	Light blocking Sheet		D	1	
19	A2XM940100	Label		C	1	
20	A2XM940400	Label	A,A1,C,D1,D3,E,F2,G 1,G2,I,K	C	1	
20	A2XM940300	Label	B	C	1	
21	A5C1628100	Cushion		D	2	

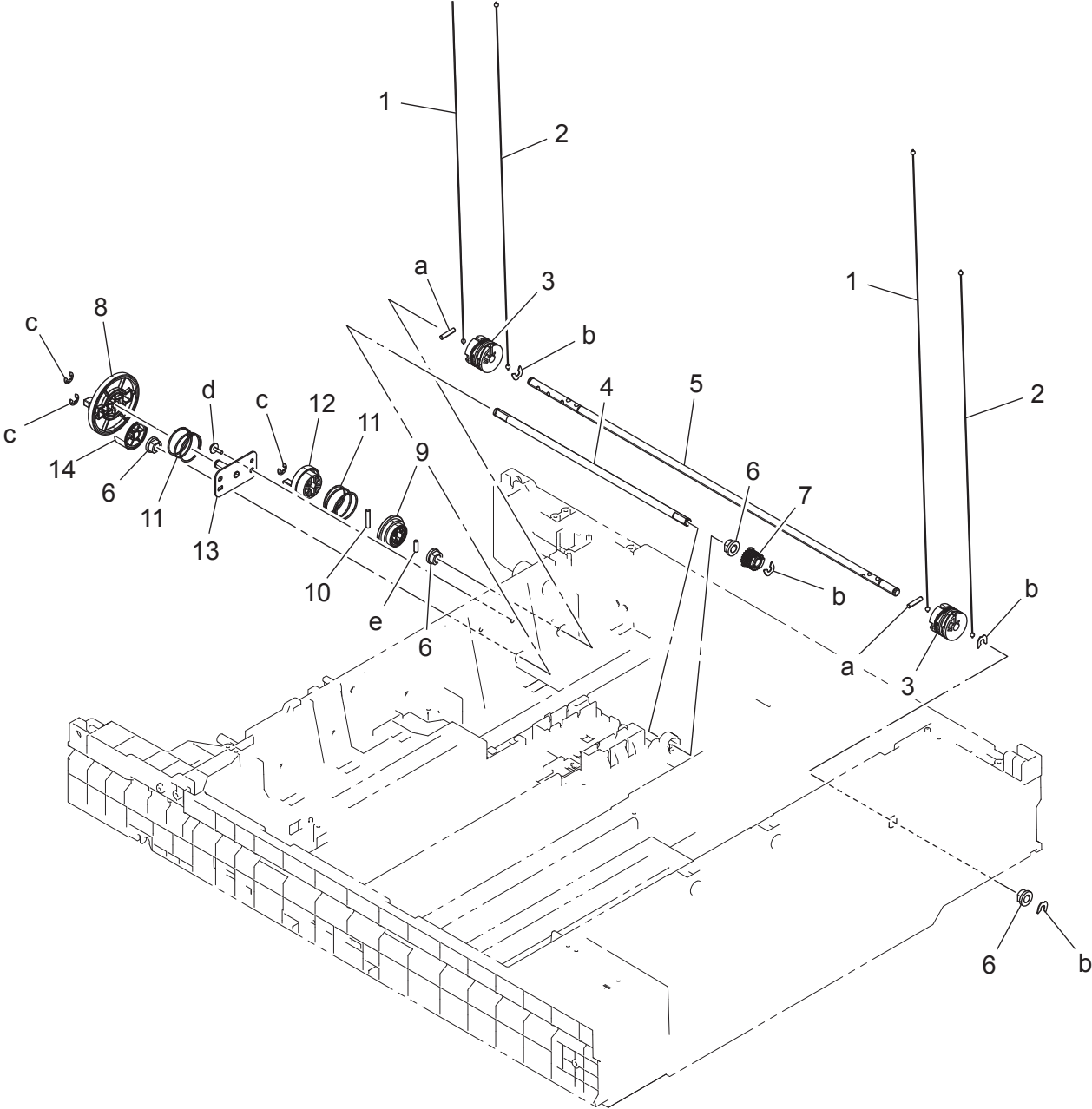
Paper Tray Section



Paper Tray Section

Key	Part No.	Description	Destinations	Class	QTY	Standard parts
1	4425377001	COVER		D	4	a-V218040086 b-V153030803
2	4425371501	PULLEY		C	4	
3	A2XM628200	Regulating Claw		C	2	
4	A2XM940500	Label		D	1	
5	A5C1M50100	Photointerrupter		B	3	
6	A2XM628100	Seal		C	2	
7	A2XM620501	Regulating Plate		D	1	
8	1075375501	SPACER	A,A1,C,D1,D3,E,F2,G 1,G2,I,K	D	2	
9	1052540901	FRICITION SHEET		C	1	
10	A2XM622100	Lifting Plate		D	1	
11	1075370813	HOLDER		D	3	
12	A2XM620401	Regulating Plate		D	1	
13	A2XM620800	Reinforce Part		D	2	
14	A2XM620600	Regulating Plate		D	1	
15	A2XM622201	Mounting Plate		D	2	
16	A2XM622901	Mounting Plate		D	1	
17	A2XM620200	Base frame	A,A1,C,D1,D3,E,F2,G 1,G2,I,K	D	1	
17	A2XM622000	Base frame	B	D	1	
18	A2XM624301	Fixing Plate		D	1	
19	A2XM624100	Regulating Part		D	1	
20	A2XM624200	Regulating Plate		D	1	
21	A2XM622800	Holder		D	1	
22	A2XM620900	Lever	A,A1,C,D1,D3,E,F2,G 1,G2,I,K	D	1	
22	A2XM621901	Lever	B	D	1	
23	A2XM621000	Torsion Coil spring		C	1	
24	A2XM620700	Regulating Plate		D	1	
25	A2XM625400	Lever /2		C	1	
26	A2XM625500	Torsion Coil spring /2		C	1	
27	A2XM941101	Processing Label /A		D	1	
28	A2XM941200	Processing Label /B		C	1	

Paper Tray Section

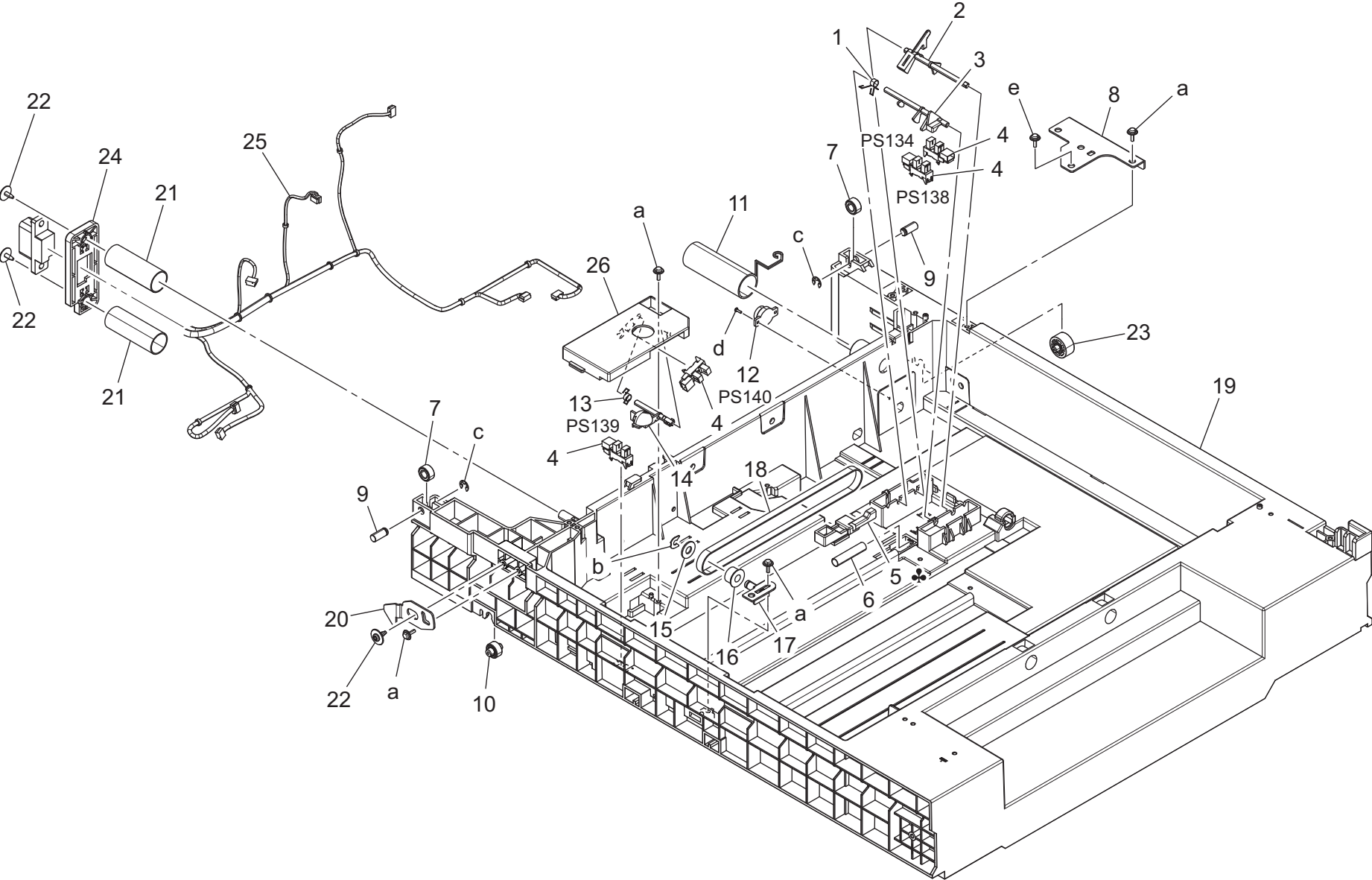




Paper Tray Section

Key	Part No.	Description	Destinations	Class	QTY	Standard parts
1	A2XM622700	Wire /2		C	2	a-V231301450 b-V218040086 c-V217040001 d-V153030803 e-V237301050
2	A2XM622600	Wire /1		C	2	
3	A2XM622400	Pulley		C	2	
4	A2XM623100	Shaft		D	1	
5	A2XM622300	Shaft		D	1	
6	A00J663200	Bushing		C	4	
7	A2XM623500	Pulley		C	1	
8	A2XM597501	Gear 61T		C	1	
9	A2XM622500	Gear		C	1	
10	4036254901	PIN		D	1	
11	A2XM598100	Spring		C	2	
12	A2XM597700	Joint		C	1	
13	A2XMG60000	CONNECTION ASSY		D	1	
14	A2XM597601	Gear 28T		C	1	

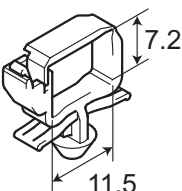
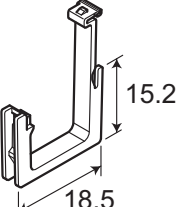
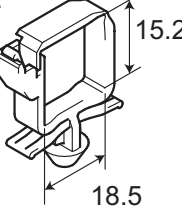
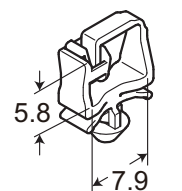
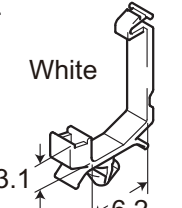
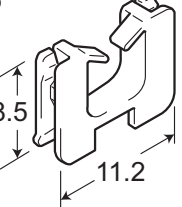
Paper Tray Section



Paper Tray Section

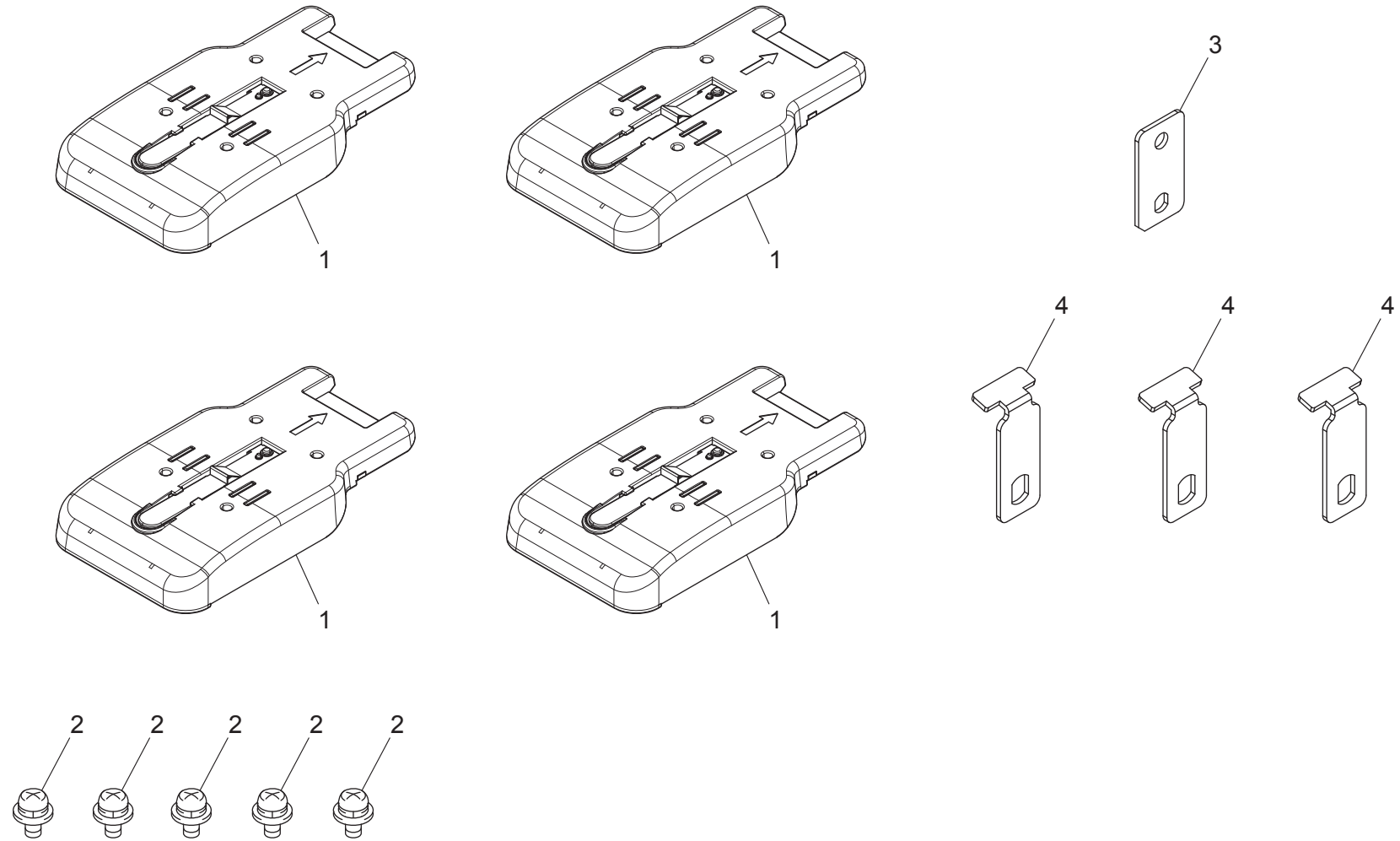
Key	Part No.	Description	Destinations	Class	QTY	Standard parts
1	A2XM625300	Torsion Coil spring /1	A,A1,C,D1,D3,E,F2,G 1,G2,I,K	C	1	a-V153030803 b-V218040086 c-V217040001 d-V165020504 e-V153031003
2	A2XM625600	Lever /3		C	1	
3	A2XM625200	Lever /1		C	1	
4	A5C1M50100	Photointerrupter		B	4	
5	A2XM623601	Slide Part		D	1	
5	A2XM623701	Slide Part	B	D	1	
6	A2XM623800	Compressing Coil spring		C	1	
7	A161623400	Roll		D	2	
8	A2XM621702	Stopper		D	1	
9	A2XM621500	Shaft		D	2	
10	A2XM621600	Roll		D	1	
11	A2XM621400	Compressing Coil spring		C	1	
12	A2XM623000	Dumper		C	1	
13	A2XM625500	Torsion Coil spring /2		C	1	
14	A2XM625400	Lever /2	C	1		
15	4444350801	WASHER	C	C	1	
16	4425374202	PULLEY 20T		C	1	
17	A2XM623300	Mounting Plate /2		D	1	
18	4425374701	TIMING BELT 740L		C	1	
19	A2XM620107	Cassette		D	1	
20	A2XM621801	Stopper	D	D	1	
21	A2XM627200	Compressing Coil spring		C	2	
22	4163529301	SCREW		C	3	
23	A2XM623900	Roll		D	1	
24	A2XM627100	Mounting Plate		D	1	
25	A2XMN10500	Paperfeed Detection harness	D	D	1	
26	A2XM625100	Cover		D	1	

Wiring Accessories and Jigs

<p>1</p> 	<p>6</p> 						
<p>2</p> 							
<p>3</p> 							
<p>4</p> <p>White</p> 							
<p>5</p> 							

Key	Part No.	Description	Destinations	Class	QTY	Standard parts
1	V500010082	Locking Wire Saddle		D		
2	V500010083	Locking Wire Saddle		D		
3	V500020098	Mini Locking wire saddle		D		
4	V500020099	Mini Locking wire saddle		D		
5	V570010021	Saddle		D		
6	V570010026	saddle		D		

# Accessory Parts



# Accessory Parts

Key	Part No.	Description	Destinations	Class	QTY	Standard parts
1	A2XMR72111	Heater Assy		D	4	
2	V116040804	Screw		V	5	
3	A093104001	Stop plate		C	1	
4	A0XW608300	Connecting Plate		C	3	

# MAINTENANCE LIST

● The items with no Page/Key numbers are not handled as spare parts.

No.	Section	PM Parts Description	Maintenance Cycle (K=1,000)		Parts No.	Destinations	Page/Key	Note
			QTY	Replace				
1	Paper Take-up Section	Pick-up roller	2	300K	A64J564201		P6-14	*1 *2
2		Feed roller	2	300K	A64J564101		P6-13	*1 *2
3		Separation roller	2	300K	A64J564101		P7-6	*1 *2

\*1: Actual durable cycle (life counter value)

\*2: Replace those three parts at the same time.



メンテナンスリスト

● ページ / キー ナンバーのないものは、アフターサービス部品ではありません。

No.	区分	P M 部品名称	サイクル (K=1,000)		部品番号	仕向地	頁 / キー	備考
			員数	交換				
1	給紙部	ピックアップローラ	2	300K	A64J564201		P6-14	*1 *2
2		給紙ローラ	2	300K	A64J564101		P6-13	*1 *2
3		分離ローラ	2	300K	A64J564101		P7-6	*1 *2

\*1: ライフカウンター値

\*2: 同時交換のこと。

DESTINATION

Destination No.		Destinations		V	Hz	Model No.
A	A1	JAPAN		100	50/60	A9HF003
	A2	JAPAN		200	50/60	
B		USA, CANADA		120	60	A9HF013
C		EUROPEAN TYPE		220-240	50/60	A9HFWY3
D	D1	S.E ASIA TYPE	THAILAND, SRI LANKA, SINGAPORE, MALAYSIA, HONG KONG, PAKISTAN, INDIA, BANGLADESH, INDONESIA	220-240	50/60	A9HFWY3
	D3	OCEANIA TYPE	AUSTRALIA, NEW ZEALAND	220-240	50/60	A9HFWY3
E		PHILIPPINES		220-240	50/60	A9HFWY3
F	F1	SAUDI ARABIA		127	60	
	F2	SAUDI ARABIA		220-240	50/60	A9HFWY3
G	G1	C.S AMERICA		220-240	50/60	A9HFWY3
	G2	C.S AMERICA		120	60	A9HF013
H		TAIWAN		110	60	
I		JORDAN, LEBANON, SYRIA, SOUTH AFRICA, IRAQ, IRAN, N.YEMEN, CAMEROON, UAE, BAHRAIN, OMAN, QATAR, KUWAIT, KENYA, TUNISIA, IVORY COAST, MOROCCO		220-240	50/60	A9HFWY3
J		CHINA		220-240	50/60	
K		KOREA		220-240	50/60	A9HFWY3