

KONICA MINOLTA

PARTS GUIDE MANUAL

SEPTEMBER 2013

LU-301
A03NW20

INFORMATION FOR PARTS GUIDE MANUAL

To find correct Parts No., refer to the "HOW TO MAKE THE BEST USE OF THIS MANUAL" in the following page.

HOW TO MAKE THE BEST USE OF THIS MANUAL

- 1 When you order, please check the proper figures beforehand that are on Our Parts Guide Manual, and order with the appropriate figures.
- 2 For screws, Nuts, Washers, retaining rings and Pins which are used in this model, one letter is shown on the Standard parts column of Parts list and exploded diagrams.
- 3 In order to maintain safety of the product, some specific parts composed of this product are set up as "essential safety parts".
- 4 The assigned parts number for the "essential safety parts" is indicated as "SP00-****".
When replacing these parts, follow precautions for disassembling and installing which are listed in the Service Manual.
Do not use any parts that are not set up as
- 5 ♣ means that there are exclusive parts for each destination.
Please check the appropriate destination when you order.
- 6 Revision Mark
Marked as ▲ on the illustration shows that the revision has been made.
- 7 All rights reserved. (any reprints or quotations are prohibited.)
Use of this parts guide manual should be strictly supervised to avoid disclosure of confidential information.

パーツガイドマニュアルのご案内

サービス部品をご発注の際には、下記に示す“パーツガイドマニュアルの活用にあたって”をご参照の上、正しい部品番号にてお願い致します。

パーツガイドマニュアルの活用にあたって

- 1 部品発注の際には、掲載されている部品番号の桁数を確認し、掲載されている桁数で発注願います。
- 2 この製品に使用されているネジ、ナット、ワッシャー、止め輪、ピンなどは、リストの右側の Standard parts 欄に a,b,c,……で表示し、イラストにも a,b,c,……表示してあります。
- 3 製品の安全性を維持する為に、製品に使用される特定の部品を「重要保安部品」として設定しています。
- 4 重要保安部品の部品番号は、“SP00-****”と記載されていますので、部品交換時は、サービスマニュアル記載の分解・組み立ての注意事項に従って作業をして下さい。
また、指定以外の部品は一切使用しないで下さい。
- 5 本文に ♣ が表示されている部品は、仕向け地毎に専用部品がある事を意味しています。
オーダーされる時は、仕向け地を確認して下さい。
- 6 改訂記号について
イラスト上に ▲ 印が表示されている部分は、改訂された事を表します。
- 7 著作権所有（無断転載及び無断引用の禁止）
本パーツガイドマニュアルについては、機密保持等その扱いには十分注意して下さい。万一取り扱いを誤った場合には、法律で処罰されることがあります。

CONTENTS

No.	DESCRIPTION	名称	PAGE No.
1	EXTERNAL PARTS	外装部	P1
2	FRAME SECTION	フレーム部	P2
3	LIFT-UP TRAY SECTION	リフトアップトレイ部	P3
4	FRONT LIFT WIRE SECTION	前昇降ワイヤ部	P4
5	PAPER FEED SECTION	給紙部	P5 P6
6	PAPER TRANSPORT SECTION	搬送部	P7
7	REAR LIFT WIRE SECTION	後昇降ワイヤ部	P8
8	DRIVE SECTION	駆動部	P9
9	WIRING	束線	P10
10	WIRING ACCESSORIES AND JIGS	配線部品・治具	P11
11	ACCESSORY PARTS	同梱部品	P12

INDEX

Parts No.	Page No.
12QR86011	9-4
12UM11030	3-4
12VL42390	8-18
12VL42941	3-11
13SU10081	4-23
13SU10340	8-6
13SU10460D	3-14
13SU10591D	2-2
13SU12031D	1-14
13SU12170D	1-2
13SU47061D	4-3
13SU47141D	4-10
13SU47260	8-10
13SU47271	8-12
13SU47300D	8-11
13SU47330D	8-9
13SU47351	8-14
13SU47380	8-8
13SU47410	8-17
13SU47420	4-5
13SU47420	8-5
13SU47460D	3-9
13SU47470	9-3
13SU47480	4-7
13SU47480	8-7
25AA42570	4-11
4030312201	7-16
4036301401	9-14
4037090201	7-12
40AA32320	4-14
4106206301	12-12
466076020	4-4
466076020	8-19
540047030	3-13
540047200	3-2
55VA40610	4-12
55VA75540	7-8
56AA40490	5-8
56AA40490	6-17
56AA80031	9-12

Parts No.	Page No.
9335130061	6-4
9335130061	7-6
9335130061	9-5
A00J168102	1-6
A00J168400	1-7
A00J168801	1-8
A00J563600	5-7
A00J563600	6-16
A00J587000	5-14
A00J595600	5-6
A00J601600	6-8
A00J602700	5-11
A00J602800	5-18
A00J617800	6-2
A00J618500	6-15
A00J619500	6-14
A00J619600	6-12
A00J619611	6-12
A00J619700	6-11
A00J619800	6-19
A00J660800	6-21
A00J663200	5-1
A00J663200	5-20
A00J663200	6-7
A00J663200	7-13
A00J663200	9-6
A00J700900	12-10
A00J700900	12-18
A00JH00D00	1-5
A00JM12000	9-13
A03N100201	2-5
A03N100300	3-7
A03N100400	2-8
A03N100501	2-12
A03N100700	3-8
A03N100900	4-16
A03N101000	4-2
A03N101100	4-22
A03N101200	4-1
A03N101300	12-3


Parts No.	Page No.
A03N101400	12-1
A03N101502	12-8
A03N101600	12-9
A03N101600	12-17
A03N101900	12-6
A03N102000	7-5
A03N102100	7-3
A03N102200	7-4
A03N102300	7-1
A03N102400	7-2
A03N102500	4-15
A03N103501	2-11
A03N103601	2-6
A03N103700	2-1
A03N103801	4-13
A03N103900	2-7
A03N104000	2-10
A03N104100	2-3
A03N104200	4-24
A03N104300	12-13
A03N104300	12-19
A03N104400	2-9
A03N104500	4-26
A03N160000	1-10
A03N160100	1-20
A03N160200	1-4
A03N160300	2-13
A03N160400	1-18
A03N160501	1-1
A03N160603	1-9
A03N160700	1-15
A03N160800	1-19
A03N160900	1-16
A03N161000	1-17
A03N161100	1-12
A03N161200	1-3
A03N161300	1-22
A03N210100	9-9
A03N210300	7-7
A03N210401	5-16

Parts No.	Page No.
A03N210401	6-1
A03N210500	9-7
A03N210600	9-8
A03N210700	9-10
A03N210800	5-15
A03N211100	8-13
A03N211200	8-16
A03N560001	5-13
A03N560101	6-5
A03N560201	6-18
A03N560212	6-18
A03N560301	6-13
A03N560402	5-4
A03N560500	5-17
A03N560600	5-3
A03N560700	5-2
A03N560800	5-9
A03N560900	2-4
A03N561001	6-6
A03N561100	6-3
A03N561200	5-5
A03N561501	6-9
A03N561600	5-12
A03N561700	6-10
A03N620001	3-3
A03N620100	3-5
A03N620200	4-6
A03N620200	8-4
A03N620300	4-9
A03N620300	8-1
A03N620400	4-8
A03N620600	4-20
A03N620700	4-18
A03N620800	4-21
A03N620900	4-17
A03N621000	8-2
A03N621101	9-2
A03N621300	8-3
A03N621800	4-19
A03N621900	3-12

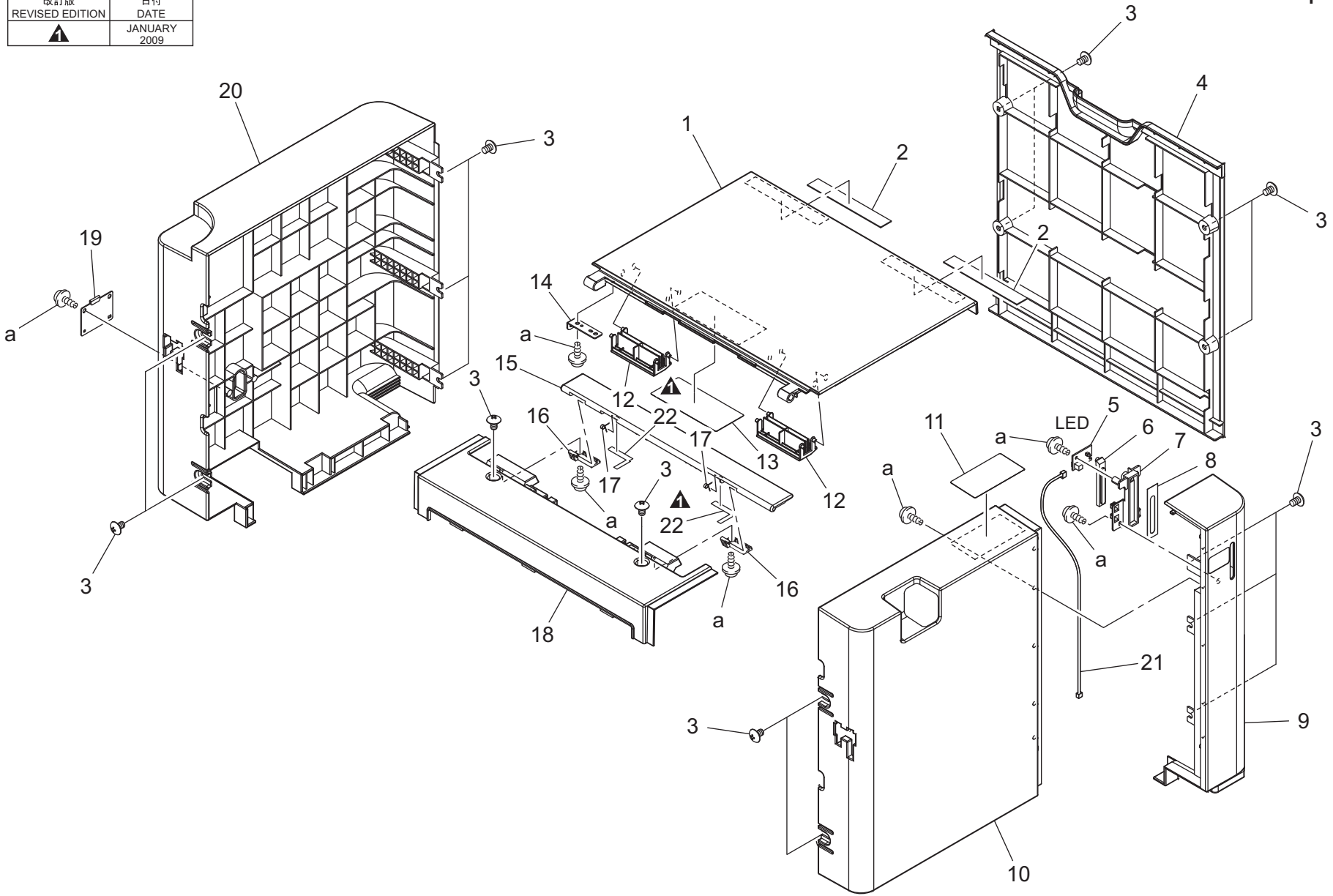
Parts No.	Page No.
A03N622000	3-10
A03N700000	7-10
A03N700100	7-14
A03N700201	7-9
A03N700300	7-11
A03N700400	7-17
A03N700501	7-15
A03N940000	1-13
A03N940100	1-11
A03N940500	1-13
A03NH00101	9-1
A03NN10001	10-1
A03NN10101	7-18
A03NN10202	10-2
A03NN10300	1-21
A03NN10400	10-2
A03NR70000	3-6
A03NR7A000	4-25
A03NR7A100	3-1
A03NR7A200	8-15
A03NR7A300	9-11
A03NR7A400	12-4
A0P0664000	5-19
A0P0664000	6-22
A0TJ560500	5-24
A0TJ560600	5-23
A0TJ560700	5-22
A0TJ602800	5-25
A0TJ602900	5-26
A0TJ603000	5-27
A0TJ625000	12-15
A0TJ625100	12-16
A0TJ625200	12-14
A161562500	5-21
V116030803	12-22
V116040803	12-7
V137040803	12-5
V144030603	12-21
V217040001	12-2
V217060001	12-11

Parts No.	Page No.
V217060001	12-20
V500010081	11-1
V500020098	11-2
V570010021	11-3
V570010035	11-4

EXTERNAL PARTS

改訂版 REVISED EDITION	日付 DATE
	JANUARY 2009

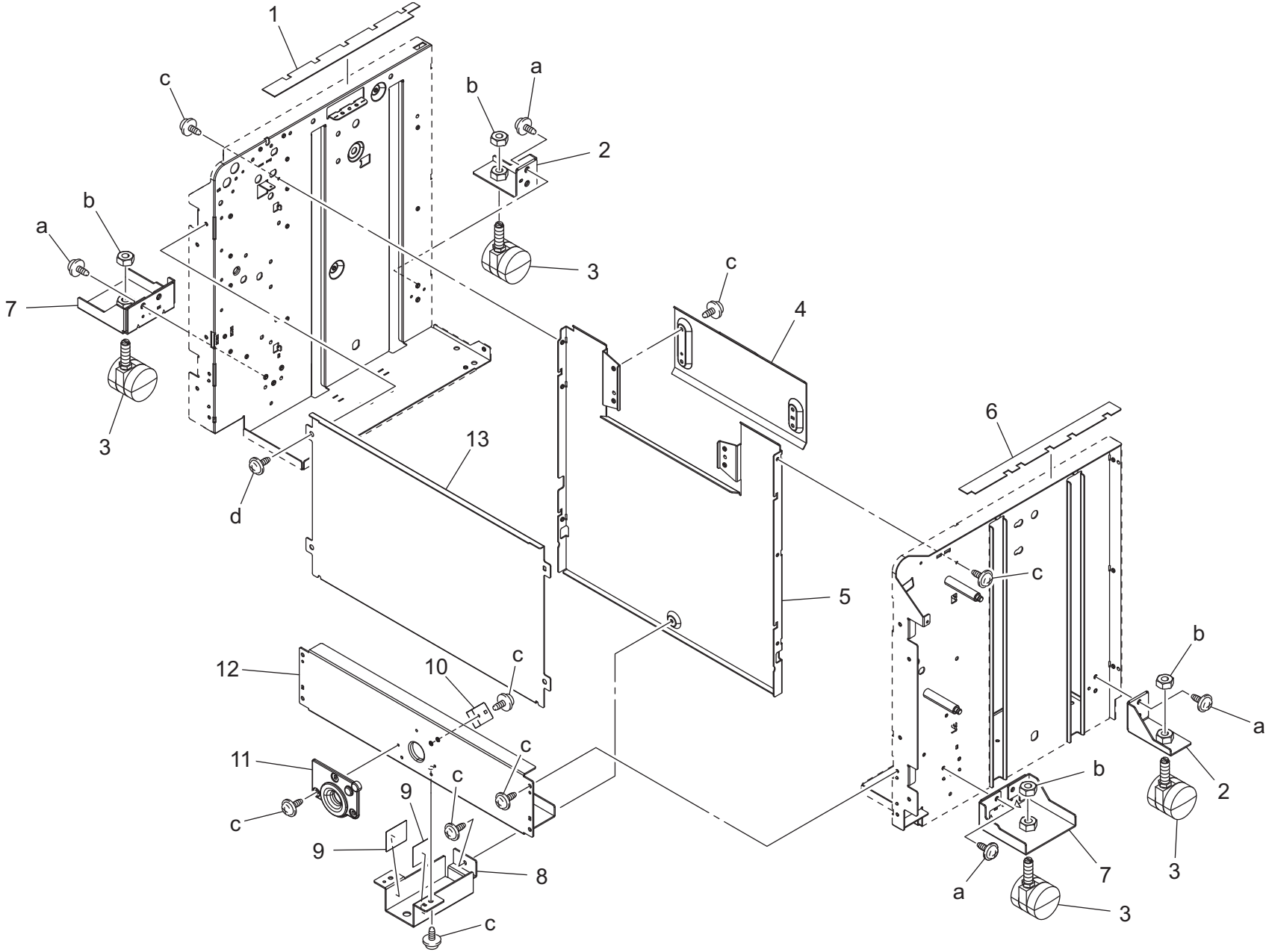
P 1



EXTERNAL PARTS

Key	Part No.	Description	Destinations	Class	QTY	Standard parts
1	A03N160501	Paper Feed Door		C	1	a-V153030803
2	13SU12170D	DOOR STOPPER CUSHION 2		C	2	
3	A03N161200	Screw		C	16	
4	A03N160200	Cover /Right		C	1	
5	A00JH00D00	PWB Assembly LED1		C	1	
6	A00J168102	Lens /A		C	1	
7	A00J168400	Light blocking Cover		C	1	
8	A00J168801	Light blocking Plate		C	1	
9	A03N160603	Cover /Right Front		C	1	
10	A03N160000	Cover /Front		C	1	
11	A03N940100	Label		C	1	
12	A03N161100	Holding Plate		C	2	
13	A03N940000	Label	(Model No.A03N-W20)	C	1	
13	A03N940500	Label	(Model No.A03N-W21)	C	1	
14	13SU12031D	WIRE MOUNTING PLATE		C	1	
15	A03N160700	Idler Cover		C	1	
16	A03N160900	Support Plate		C	2	
17	A03N161000	Holding Spring		C	2	
18	A03N160400	Cover /Upper		C	1	
19	A03N160800	Wiring Cover		C	1	
20	A03N160100	Cover /Rear		C	1	
21	A03NN10300	Harness		C	1	
22	A03N161300	Fixing Sheet		D	1	

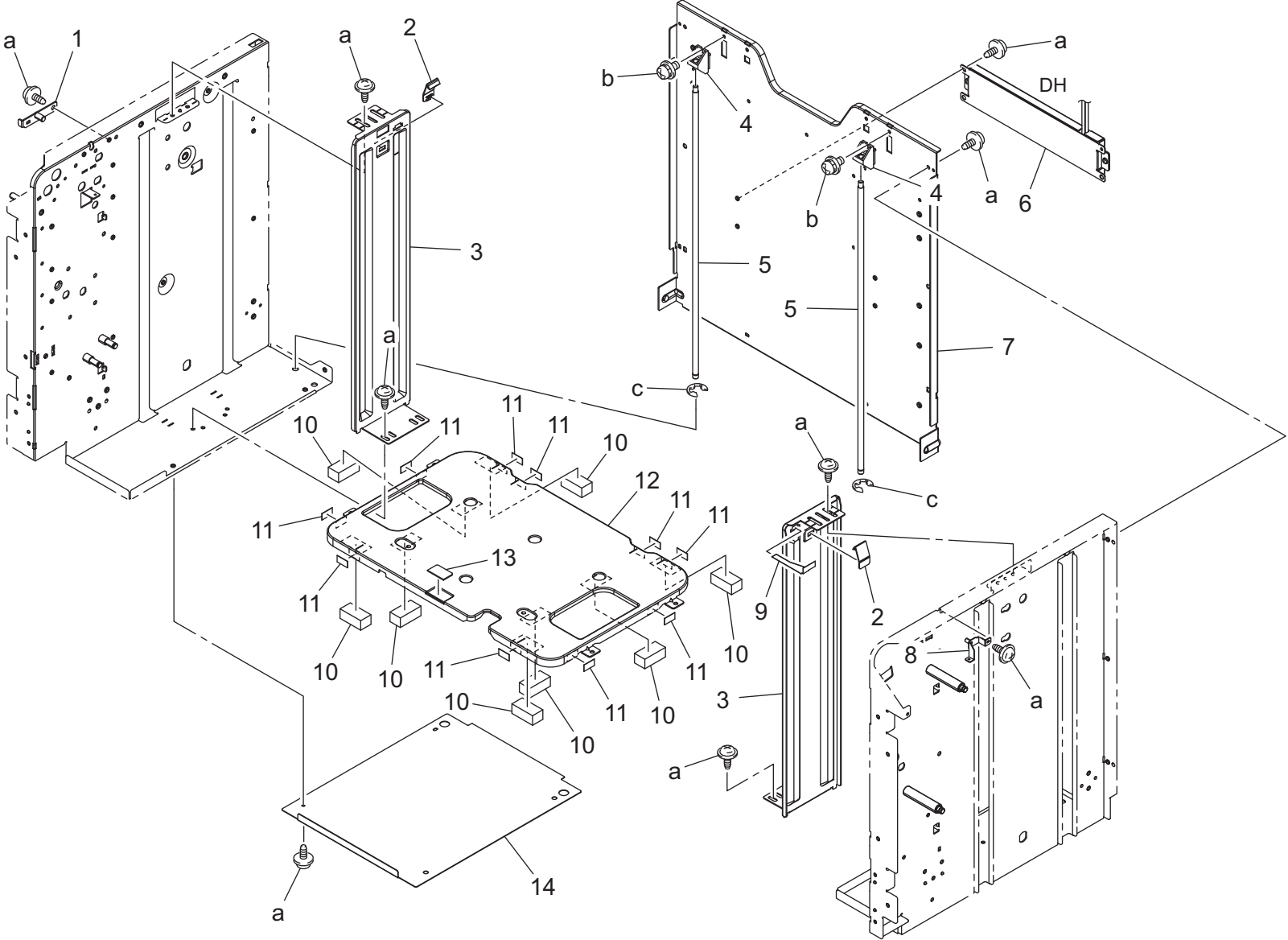
FRAME SECTION



FRAME SECTION

Key	Part No.	Description	Destinations	Class	QTY	Standard parts
1	A03N103700	Sound shield Cushion /Rear		C	1	a-V127040803 b-V195080003 c-4106206301 d-V137040803
2	13SU10591D	TRAY SUPPORT PLATE RIGHT		D	2	
3	A03N104100	Adjusting Roll		D	4	
4	A03N560900	Guide Plate		C	1	
5	A03N100201	Panel /Left		C	1	
6	A03N103601	Sound shield Cushion /Front		C	1	
7	A03N103900	Support Plate /Left		D	2	
8	A03N100400	POSITIONING PLATE /LOWER		D	1	
9	A03N104400	Guide Film		C	2	
10	A03N104000	Ground Plate		C	1	
11	A03N103501	Positioning Block		C	1	
12	A03N100501	POSITIONING STAY		D	1	
13	A03N160300	Cover /Left		D	1	

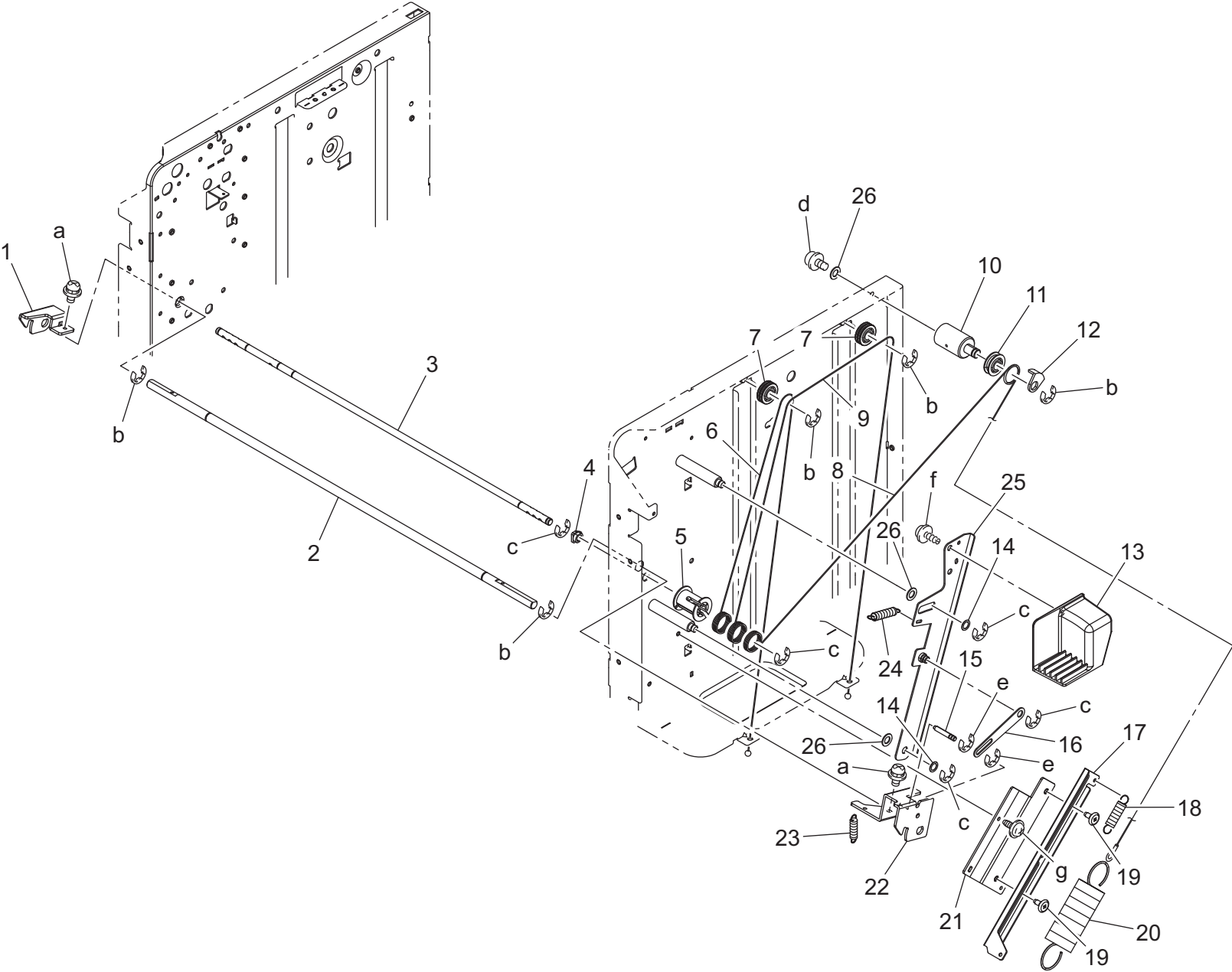
LIFT-UP TRAY SECTION



LIFT-UP TRAY SECTION

Key	Part No.	Description	Destinations	Class	QTY	Standard parts
1	A03NR7A100	SUPPORT PLATE/REAR STAKE		D	1	a-4106206301 b-V116031203 c-V217040001
2	540047200	PAPER REGULATING CLAW		C	2	
3	A03N620001	REGULATING PLATE		C	2	
4	12UM11030	PAPER REGULATING BLOCK		C	2	
5	A03N620100	Regulating Shaft		D	2	
6	A03NR70000	Moisture Proof Heater		D	1	
7	A03N100300	PANEL /RIGHT		D	1	
8	A03N100700	SUPPORT PLATE /ASSY		D	1	
9	13SU47460D	PAPER GUIDE SHEET		C	1	
10	A03N622000	Sound shield Cushion		C	8	
11	12VL42941	SLIDE SHEET 3		C	10	
12	A03N621900	Lifting Plate /ASSY		D	1	
13	540047030	MULTI FEED PREVENT PLATE		B	1	
14	13SU10460D	COVER 1		D	1	

FRONT LIFT WIRE SECTION



FRONT LIFT WIRE SECTION

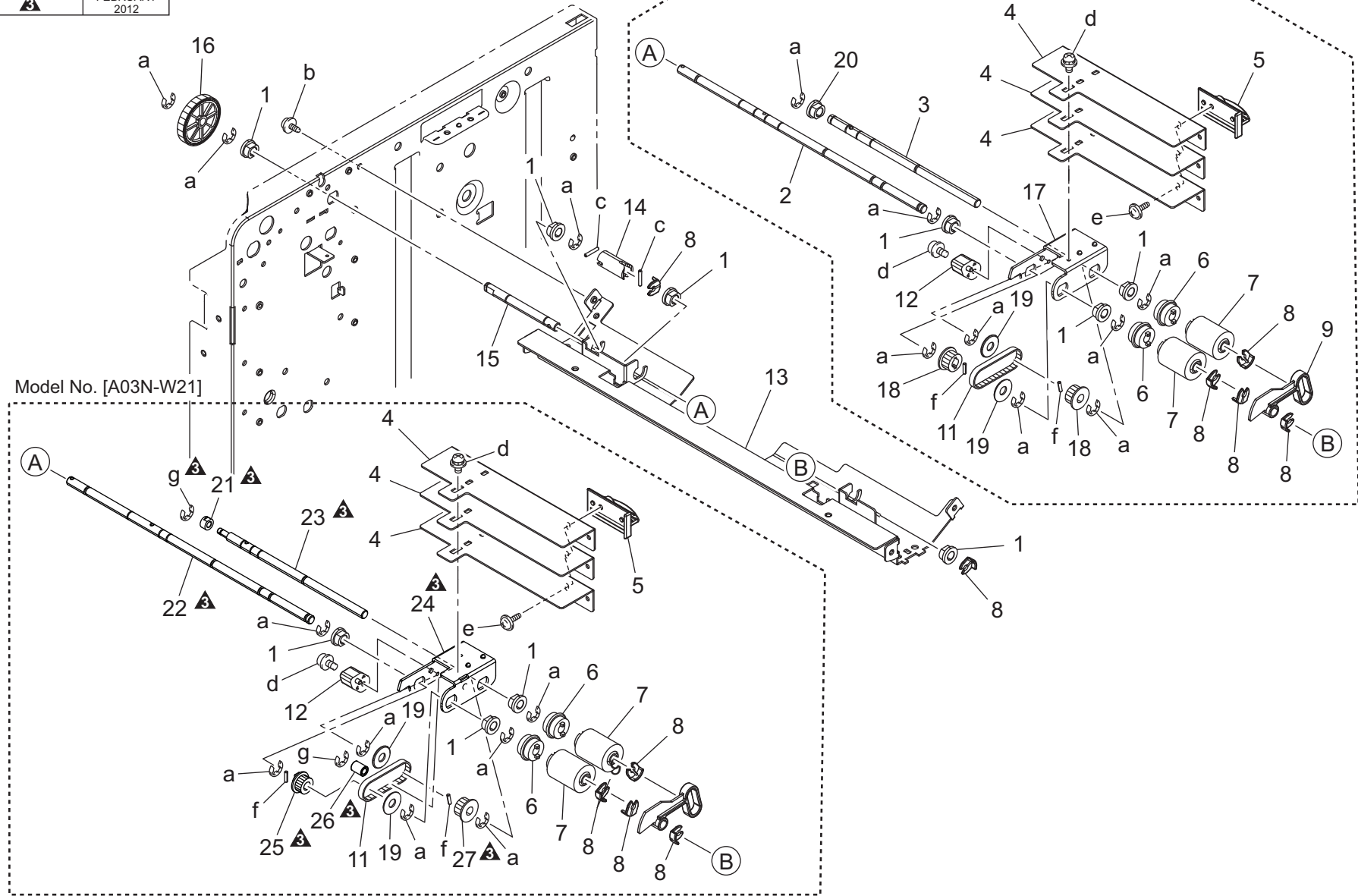
Key	Part No.	Description	Destinations	Class	QTY	Standard parts
1	A03N101200	LOCK CLAW /R		C	1	a-V116030803 b-V217060001 c-V217040001 d-V116030804 e-V217030001 f-V153030803 g-4106206301
2	A03N101000	LOCK SHAFT /1		D	1	
3	13SU47061D	LIFTING SHAFT		D	1	
4	466076020	PAPER FEED SHAFT HOLDER		B	1	
5	13SU47420	DRIVE PULLEY		C	1	
6	A03N620200	Up/down Wire /S		C	1	
7	13SU47480	WIRE PULLEY		C	2	
8	A03N620400	Auxiliary Wire		C	1	
9	A03N620300	Up/down Wire /L		C	1	
10	13SU47141D	DRIVE AUXILIARY SHAFT 1		D	1	
11	25AA42570	Wire Pulley		C	1	
12	55VA40610	WIRE HOLDER A		C	1	
13	A03N103801	Release Handle		C	1	
14	40AA32320	TONER SUPPLY SPACER		C	2	
15	A03N102500	Connecting Shaft /2		D	1	
16	A03N100900	RELEASE PLATE /2		C	1	
17	A03N620900	Slide Plate		C	1	
18	A03N620700	Slide Spring /1		C	1	
19	A03N621800	Slide Shoulder screw		C	2	
20	A03N620600	Slide Spring /1		C	1	
21	A03N620800	Mounting Plate		D	1	
22	A03N101100	LOCK CLAW /F		C	1	
23	13SU10081	TRAY LOCKING SPRING		C	1	
24	A03N104200	Regulating Spring		C	1	
25	A03NR7A000	TRAY RELEASE PLATE STAKE		D	1	
26	A03N104500	Washer		C	3	

PAPER FEED SECTION

改訂版 REVISED EDITION	日付 DATE
	FEBRUARY 2012

Model No. [A03N-W20]

P 5

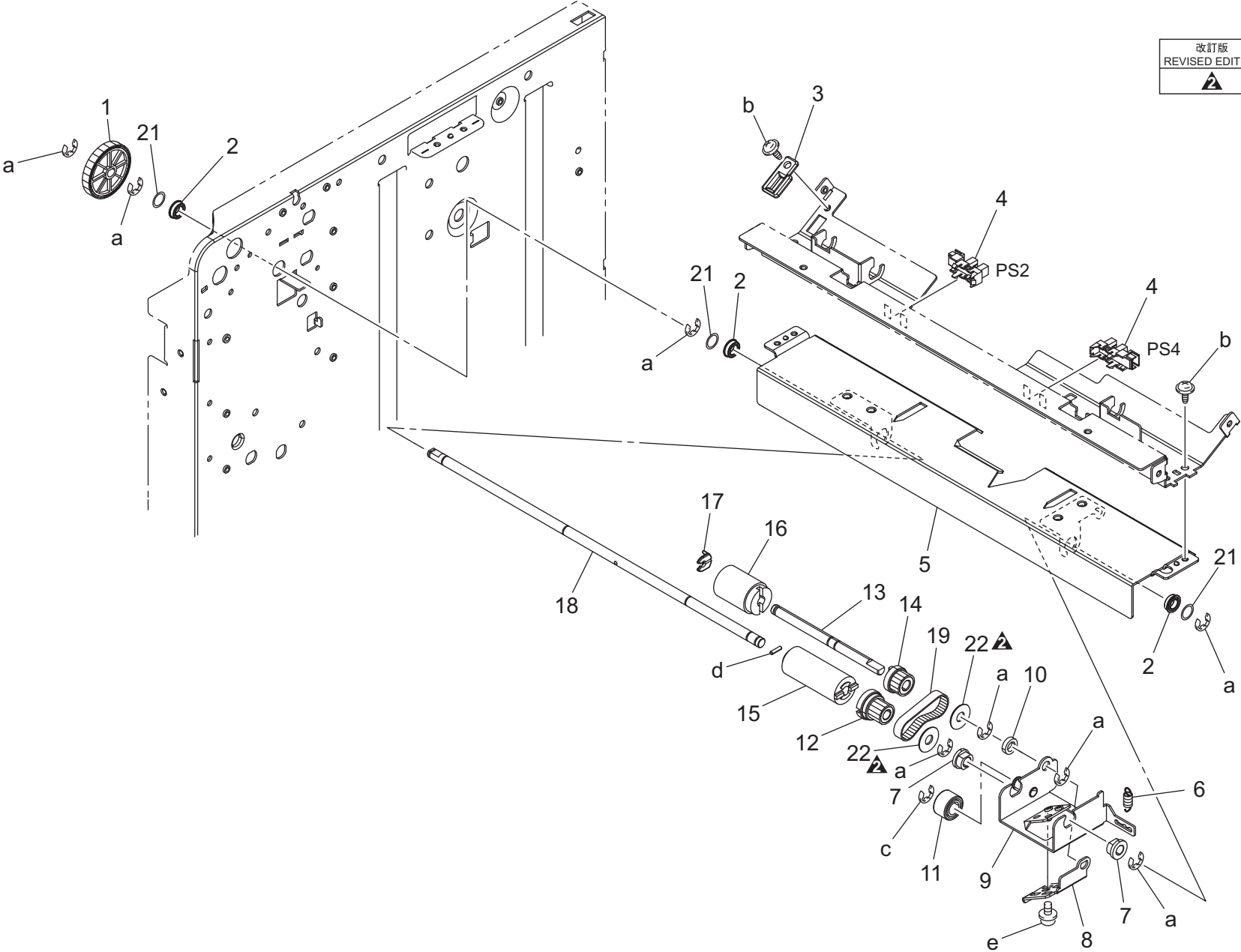


PAPER FEED SECTION

Key	Part No.	Description	Destinations	Class	QTY	Standard parts
1	A00J663200	Bushing		C	7	a-V217040001 b-4106206301 c-V232201009 d-V116030803 e-V153030803 f-V231200850 g-V217030001
2	A03N560700	Paper feed Shaft /2 給紙軸 / 2	(Model No.A03N-W20)	D	1	
3	A03N560600	Paper feed Shaft /1 給紙軸 / 1	(Model No.A03N-W20)	D	1	
4	A03N560402	Pressing Weight 押圧重り		D	3	
5	A03N561200	Handle 把手		C	1	
6	A00J595600	Clutch クラッチ		C	2	
7	A00J563600	Roller ローラ		A	2	
8	56AA40490	SHAFT STOPPER 4 軸ストッパ 4		C	6	
9	A03N560800	Actuator アクチュエータ		C	1	
11	A00J602700	Timing belt 102L 給紙タイミングベルト 102 L		C	1	
12	A03N561600	Stopper Part ストッパ材		C	1	
13	A03N560001	Guide Plate /ASSY ガイド板 / ASSY		C	1	
14	A00J587000	Paper feed Coupling 給紙カップリング		C	1	
15	A03N210800	Connecting Shaft 連結軸		D	1	
16	A03N210401	Gear 41T ギア 41 T		C	1	
17	A03N560500	Mounting Plate 取付板	(Model No.A03N-W20)	D	1	
18	A00J602800	Pulley 14T プーリ 14 T	(Model No.A03N-W20)	C	2	
19	A0P0664000	Washer ワッシャ		D	2	
20	A00J663200	Bushing すべり軸受	(Model No.A03N-W20)	C	1	
21	A161562500	Bushing すべり軸受	(Model No.A03N-W21)	C	1	
22	A0TJ560700	Shaft /2 軸 / 2	(Model No.A03N-W21)	D	1	
23	A0TJ560600	Shaft /1 軸 / 1	(Model No.A03N-W21)	D	1	
24	A0TJ560500	Mounting Plate 取付板	(Model No.A03N-W21)	D	1	
25	A0TJ602800	Pulley /2 プーリ / 2	(Model No.A03N-W21)	D	1	
26	A0TJ602900	Pulley /3 プーリ / 3	(Model No.A03N-W21)	D	1	
27	A0TJ603000	Pulley /1 プーリ / 1	(Model No.A03N-W21)	D	1	

PAPER FEED SECTION

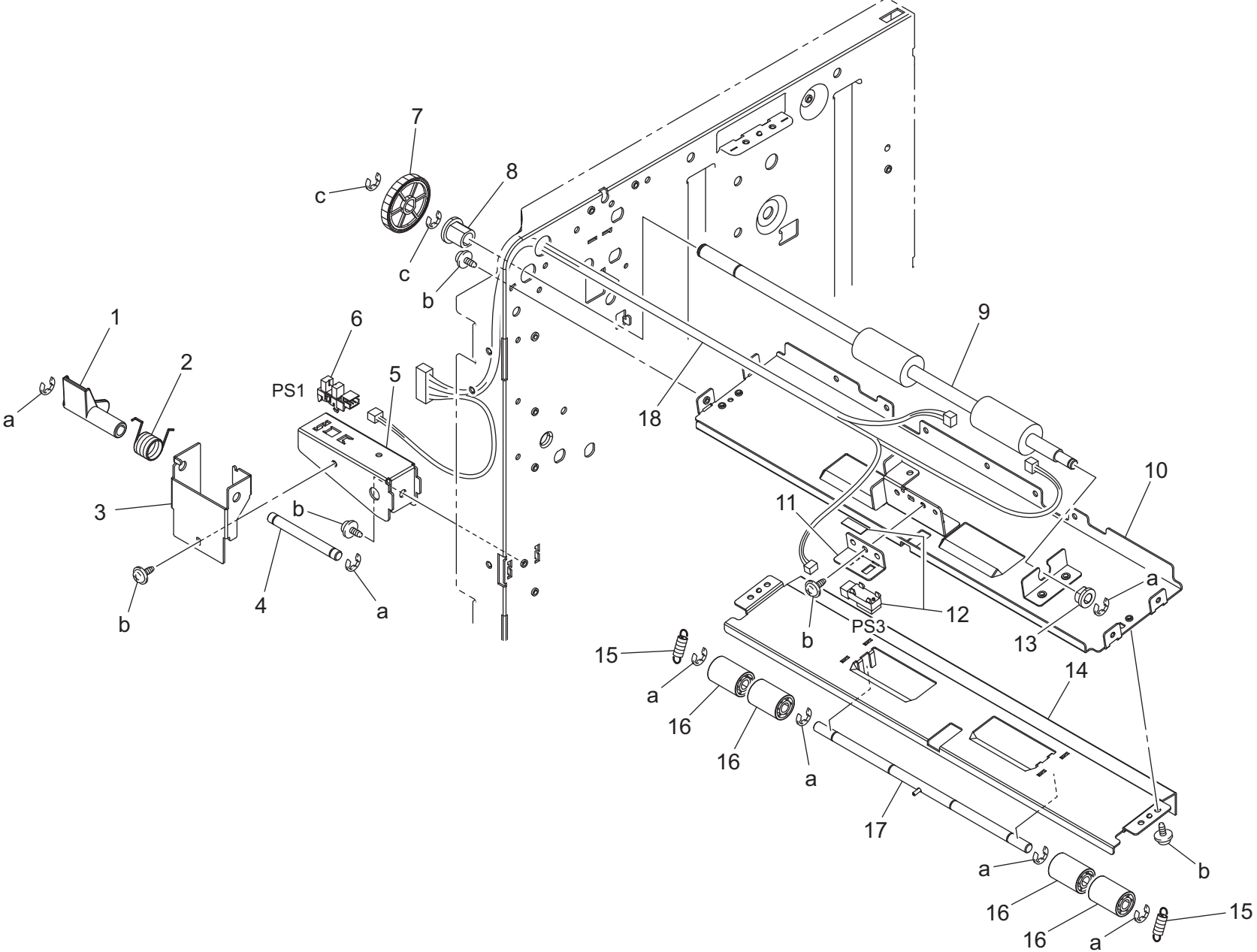
改訂版 REVISED EDITION	日付 DATE
▲	SEPTEMBER 2010



PAPER FEED SECTION

Key	Part No.	Description	Destinations	Class	QTY	Standard parts
1	A03N210401	Gear 41T		C	1	a-V217040001 b-4106206301 c-V217060001 d-V231200850 e-V116030603
2	A00J617800	BALL BEARING		C	3	
3	A03N561100	Guide Part		C	1	
4	9335130061	PHOTO INTERRUPTER		B	2	
5	A03N560101	Paper Feed Plate /Assy		C	1	
6	A03N561001	Paper Feed Spring		C	1	
7	A00J663200	Bushing		C	2	
8	A00J601600	Multi-feed Adjusting Plate		D	1	
9	A03N561501	Mounting Plate /Assy		D	1	
10	A03N561700	Washer		D	1	
11	A00J619700	ROLL /1		C	1	
12	A00J619600Old	Pulley 14T		C	1	
12	A00J619611	Pulley 14T		C	1	
13	A03N560301	Reverse Shaft /2		D	1	
14	A00J619500	Pulley 15T		C	1	
15	A00J618500	Torque limiter		A	1	
16	A00J563600	Roller		A	1	
17	56AA40490	SHAFT STOPPER 4		C	1	
18	A03N560201Old	Reverse Shaft /1		D	1	
18	A03N560212	Reverse Shaft /1		D	1	
19	A00J619800	Timing Belt 96L		C	1	
21	A00J660800	Washer		D	3	
22	A0P0664000	Washer		D	2	

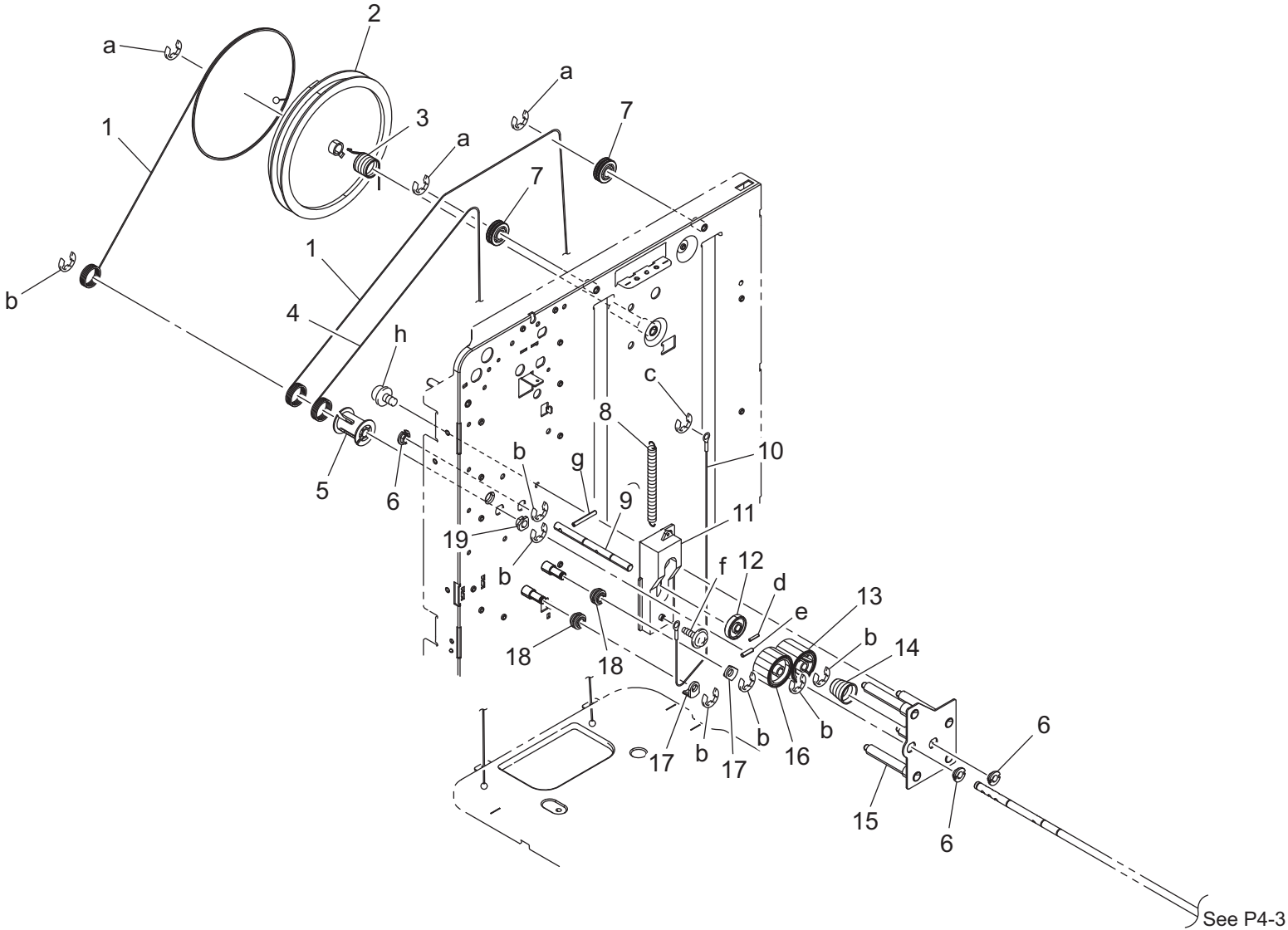
PAPER TRANSPORT SECTION



PAPER TRANSPORT SECTION

Key	Part No.	Description	Destinations	Class	QTY	Standard parts
1	A03N102300	Detection Actuator		C	1	a-V217040001 b-4106206301 c-V217060001
2	A03N102400	Torsion Spring		C	1	
3	A03N102100	Mounting Plate /2		D	1	
4	A03N102200	Shaft		D	1	
5	A03N102000	Mounting Plate		D	1	
6	9335130061	PHOTO INTERRUPTER		B	1	
7	A03N210300	Gear 41T		C	1	
8	55VA75540	PAPER FEED SHAFT HOLDER B		B	1	
9	A03N700201	Conveyance Roller		C	1	
10	A03N700000	Conveyance Plate /ASSY		C	1	
11	A03N700300	Sensor Plate		D	1	
12	4037090201	PHOTO INTERRUPTER		B	1	
13	A00J663200	Bushing		C	1	
14	A03N700100	Conveyance Plate /Lower		C	1	
15	A03N700501	PULLING SPRING		C	2	
16	4030312201	ROLL		C	4	
17	A03N700400	Conveyance Shaft /ASSY		D	1	
18	A03NN10101	LCT Relay Harness /1		D	1	

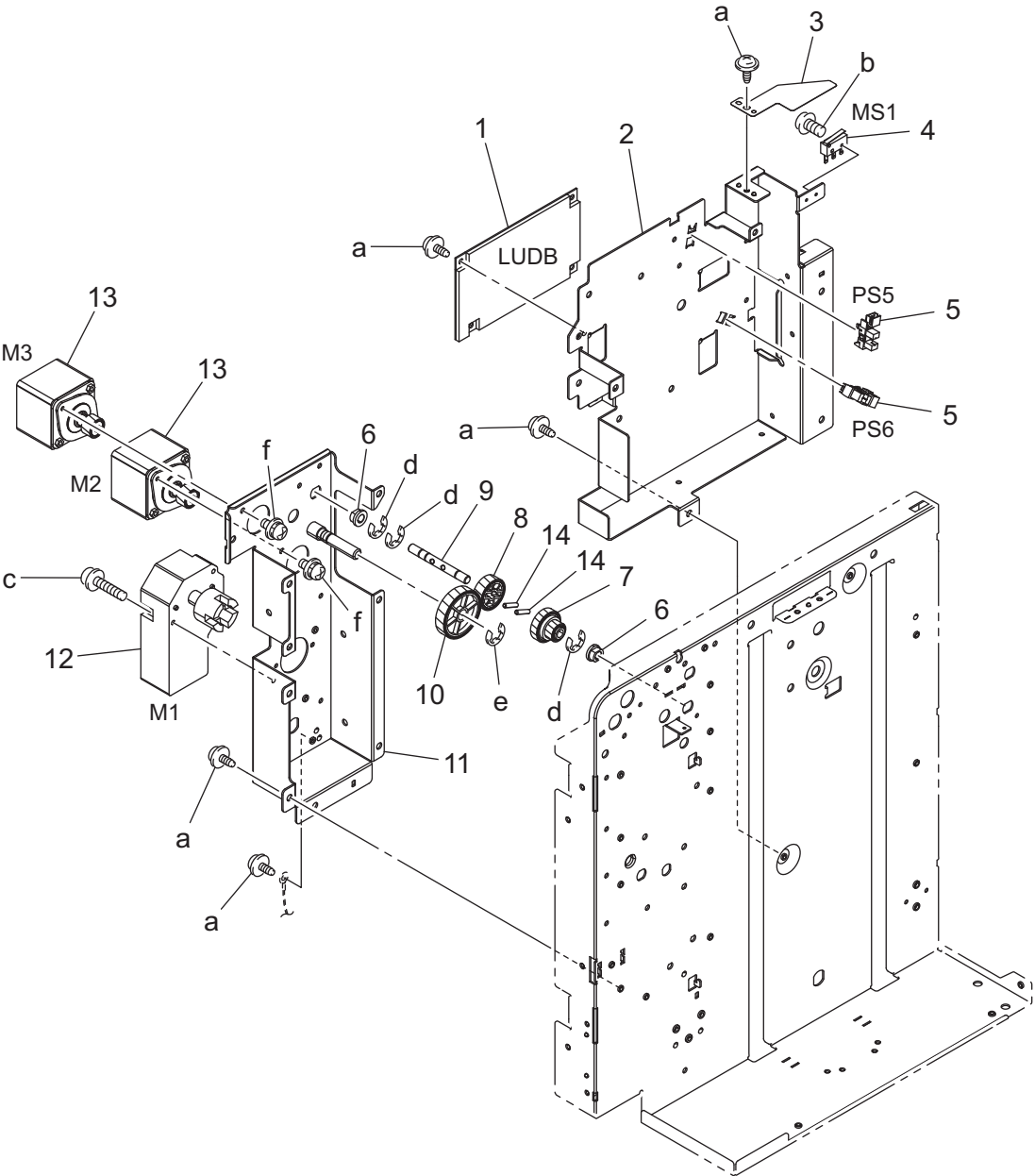
REAR LIFT WIRE SECTION



REAR LIFT WIRE SECTION

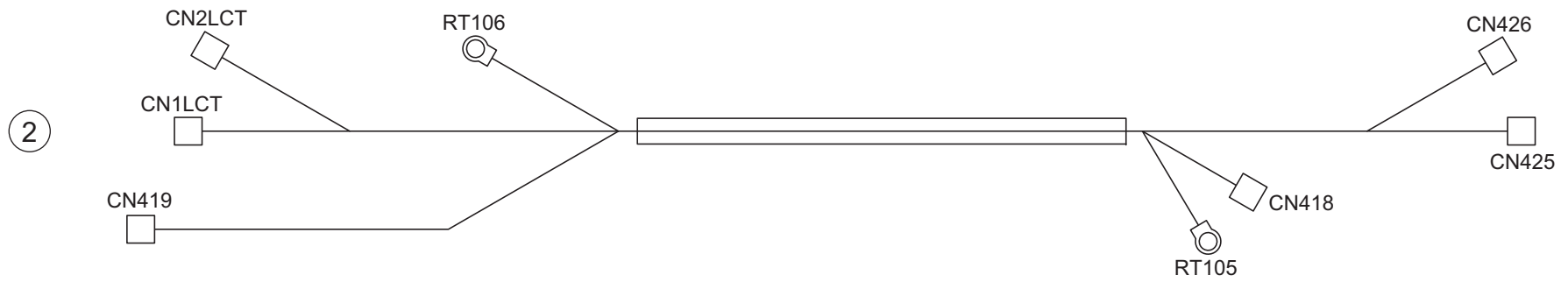
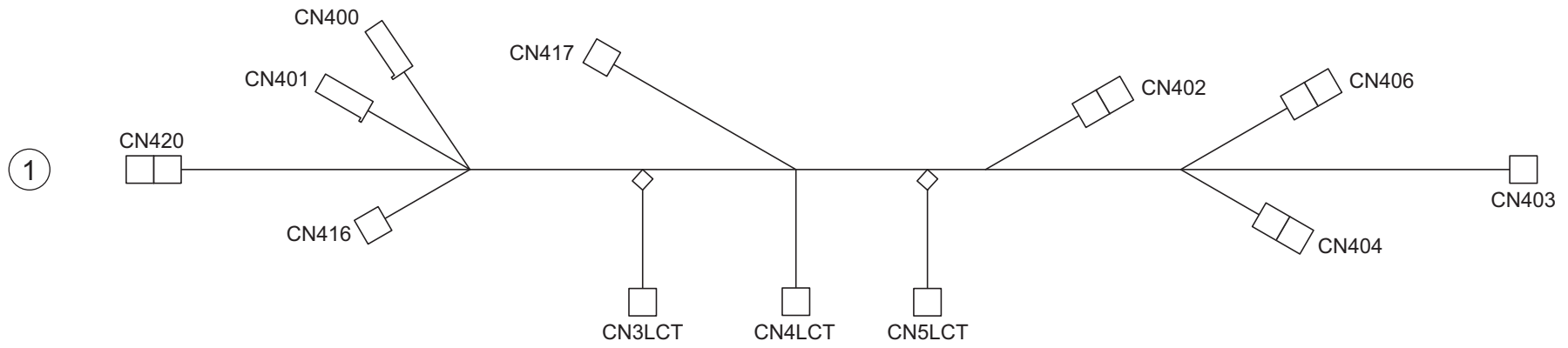
Key	Part No.	Description	Destinations	Class	QTY	Standard parts
1	A03N620300	Up/down Wire /L		C	2	a-V217060001
2	A03N621000	Level Plate		C	1	b-V217040001
3	A03N621300	Detection Spring		C	1	c-V217030001
4	A03N620200	Up/down Wire /S		C	1	d-V231201850
5	13SU47420	DRIVE PULLEY		C	1	e-V237301850
6	13SU10340	Coupling Bushing		C	3	f-V153030803
7	13SU47480	WIRE PULLEY		C	2	g-V233302550
8	13SU47380	RELEASE SPRING		C	1	h-V116030803
9	13SU47330D	DRIVE INPUT SHAFT		D	1	
10	13SU47260	RELEASE WIRE		C	1	
11	13SU47300D	RELEASE PART		C	1	
12	13SU47271	SLIDE ROLLER		C	1	
13	A03N211100	Gear 26T		C	1	
14	13SU47351	COUPLING SPRING		C	1	
15	A03NR7A200	SUPPORT PLATE STAKE		D	1	
16	A03N211200	Gear 26T		C	1	
17	13SU47410	WIRE HOLDER 1		C	2	
18	12VL42390	PULLEY A		C	2	
19	466076020	PAPER FEED SHAFT HOLDER		B	1	

DRIVE SECTION



Key	Part No.	Description	Destinations	Class	QTY	Standard parts
1	A03NH00101	PWB Assy		I	1	a-4106206301 b-V118020803 c-V116032003 d-V217040001 e-V217060001 f-V116030603
2	A03N621101	Mounting Plate		D	1	
3	13SU47470	PRESSING SPRING		C	1	
4	12QR86011	Interlock Switch		B	1	
5	9335130061	PHOTO INTERRUPTER		B	2	
6	A00J663200	Bushing		C	2	
7	A03N210500	Gear 27/15T		C	1	
8	A03N210600	Gear 27T		C	1	
9	A03N210100	Drive Shaft		D	1	
10	A03N210700	Gear 43T		C	1	
11	A03NR7A300	DRIVE PALETTE STAKE		D	1	
12	56AA80031	CASSETTE DRIVE MOTOR		B	1	
13	A00JM12000	Stepping motor		C	2	
14	4036301401	PIN		C	2	

WIRING

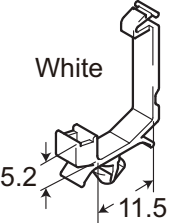
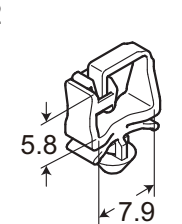
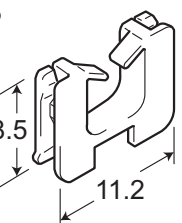
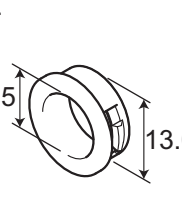


WIRING

Key	Part No.	Description	Destinations	Class	QTY	Standard parts
1	A03NN10001	LCT Wiring		D	1	
2	A03NN10202	LCT Relay Harness /2	(Model No.A03N-W20)	D	1	
2	A03NN10400	LCT Relay harness /3	(Model No.A03N-W21)	D	1	

WIRING ACCESSORIES AND JIGS

P 11

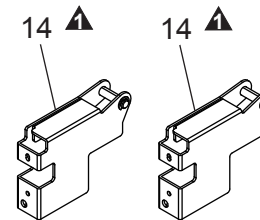
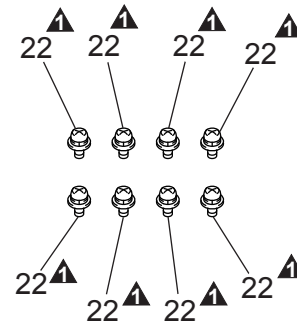
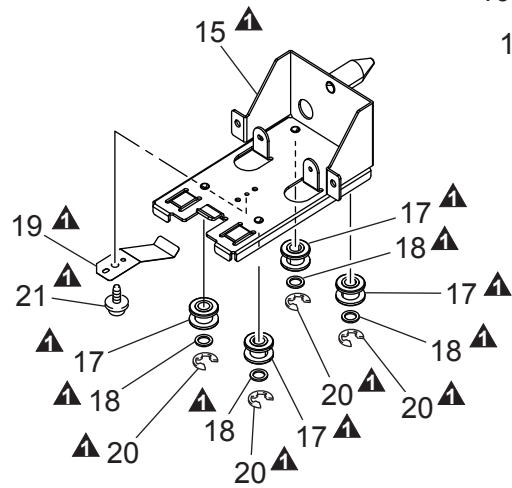
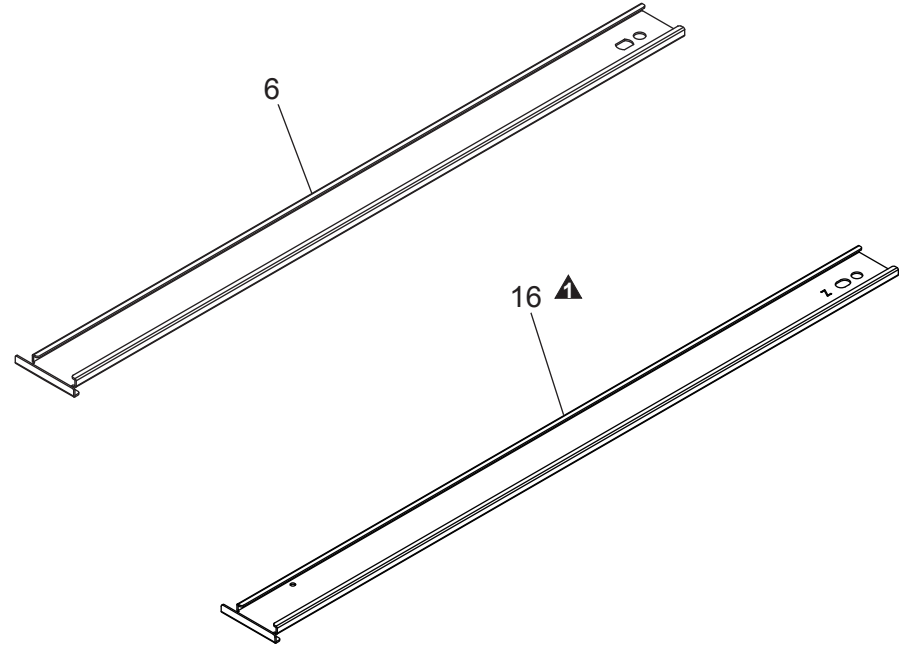
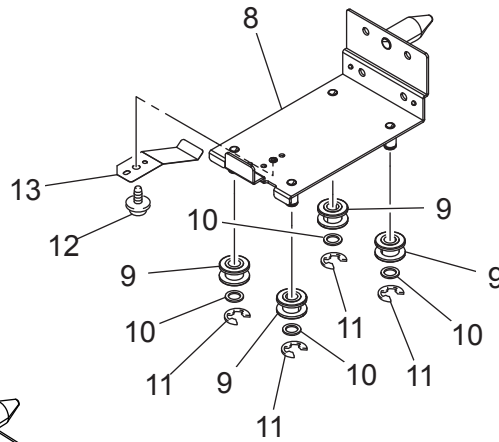
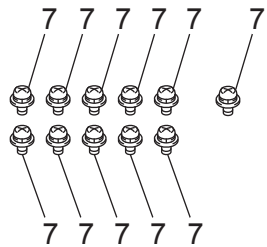
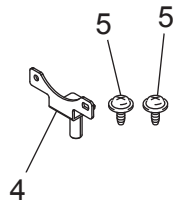
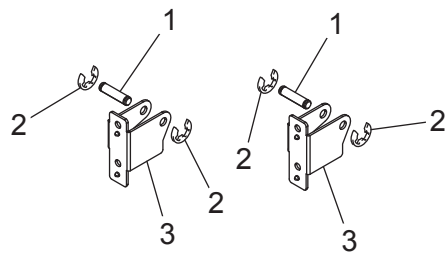
<p>1</p>  <p>White</p> <p>5.2</p> <p>11.5</p>	6	11	16	21	26	31	36
<p>2</p>  <p>5.8</p> <p>7.9</p>	7	12	17	22	27	32	37
<p>3</p>  <p>8.5</p> <p>11.2</p>	8	13	18	23	28	33	38
<p>4</p>  <p>9.5</p> <p>13.0</p>	9	14	19	24	29	34	39
5	10	15	20	25	30	35	40

Key	Part No.	Description	Destinations	Class	QTY	Standard parts
1	V500010081	Locking Wire Saddle		D	8	
2	V500020098	Mini Locking wire saddle		D	26	
3	V570010021	Saddle		D	6	
4	V570010035	Bushing		D	1	

ACCESSORY PARTS

P 12

改訂版 REVISED EDITION	日付 DATE
▲	FEBRUARY 2012



ACCESSORY PARTS

Key	Part No.	Description	Destinations	Class	QTY	Standard parts
1	A03N101400	POSITIONING SHAFT /A		C	2	
2	V217040001	E Ring		V	4	
3	A03N101300	FIXING PLATE		C	2	
4	A03NR7A400	MOUNTING PLATE STAKE		C	1	
5	V137040803	SCREW		V	2	
6	A03N101900	Slide Rail		C	1	
7	V116040803	Screw		V	11	
8	A03N101502	Guide Plate /Assy		C	1	
9	A03N101600	Guide Roll		C	4	
10	A00J700900	Collar		C	4	
11	V217060001	E Ring		V	4	
12	4106206301	SCREW		C	1	
13	A03N104300	Ground Plate		C	1	
14	A0TJ625200	Fixing Plate	(Model No.A03N-W21)	D	2	
15	A0TJ625000	Mounting Plate	(Model No.A03N-W21)	D	1	
16	A0TJ625100	Slide Rail	(Model No.A03N-W21)	D	1	
17	A03N101600	Guide Roll	(Model No.A03N-W21)	C	4	
18	A00J700900	Collar	(Model No.A03N-W21)	C	4	
19	A03N104300	Ground Plate	(Model No.A03N-W21)	C	1	
20	V217060001	E Ring	(Model No.A03N-W21)	V	4	
21	V144030603	Screw	(Model No.A03N-W21)	V	1	
22	V116030803	Screw	(Model No.A03N-W21)	V	8	

MAINTENANCE LIST

● The items with no Page/Key numbers are not handled as spare parts.

No.	Section	PM Parts Description	Maintenance Cycle (K=1,000)		Parts No.	Destinations	Page/Key	Note
			QTY	Replace				
1	Feed section	Pick-up roller	1	300K	A00J563600		P5-7	
2		Feed roller	1	300K	A00J563600		P5-7	
3		Separation roller	1	300K	A00J563600		P6-16	

メンテナンスリスト

● ページ / キーナンバーのないものは、アフターサービス部品ではありません。

No.	区分	PM 部品名称	サイクル (K=1,000)		部品番号	仕向地	頁 / キー	備考
			員数	交換				
1	給紙部	ピックアップローラ	1	300K	A00J563600		P5-7	
2		給紙ローラ	1	300K	A00J563600		P5-7	
3		分離ローラ	1	300K	A00J563600		P6-16	

DESTINATION

Destination No.		Destinations		V	Hz	Model No.
A	A1	JAPAN		100	50/60	A03N-W20/ A03N-W21
	A2	JAPAN		200	50/60	
B		USA, CANADA		120	60	
C		EUROPEAN TYPE		220-240	50/60	A03N-W20/ A03N-W21
D	D1	S.E ASIA TYPE	THAILAND, SRI LANKA, SINGAPORE, MALAYSIA, HONG KONG, PAKISTAN, INDIA, BANGLADESH, INDONESIA	220-240	50/60	A03N-W20/ A03N-W21
	D3	OCEANIA TYPE	AUSTRALIA, NEW ZEALAND	220-240	50/60	A03N-W20/ A03N-W21
E		PHILIPPINES		220-240	50/60	A03N-W21
F	F1	SAUDI ARABIA		127	60	A03N-W20
	F2	SAUDI ARABIA		220-240	50/60	A03N-W20/ A03N-W21
G	G1	C.S AMERICA		220-240	50/60	A03N-W20/ A03N-W21
	G2	C.S AMERICA		120	60	
H		TAIWAN		110	60	A03N-W20/ A03N-W21
I		JORDAN, LEBANON, SYRIA, SOUTH AFRICA, IRAQ, IRAN, N.YEMEN, CAMEROON, UAE, BAHRAIN, OMAN, QATAR, KUWAIT, KENYA, TUNISIA, IVORY COAST, MOROCCO		220-240	50/60	A03N-W20/ A03N-W21
J		CHINA		220-240	50/60	A03N-W20/ A03N-W21

Destination No.	Destinations	V	Hz	Model No.
K	KOREA	220-240	50/60	A03N-W20/ A03N-W21