

### MANAGE, MONITOR AND TRACK

**Kayleigh** is a cost management tool that tracks and manages print and scan jobs. Know who is printing and what is printed. Kayleigh can help to track print activities such as color, mono, duplex and set print limits and settings by user or department. Help your organization manage their printing costs and bring in additional revenue opportunities with Kayleigh.

#### Kayleigh helps to authenticate, authorize and account.



**Authenticate** Enable Kayleigh and control user access with an easy-to-use login using the network username and password or proximity card/token.



**Authorize** Cost management with accurate account of print, copy and scan activities to help increase efficiencies and reduce waste.



**Account** Optimize resources by monitoring activities such as print/copy/scan to help minimize waste and printing cost and set limits by users or department.



#### Key Benefits of Kayleigh:

**Track** all print/copy/scan activities for easy monitoring and management of cost.

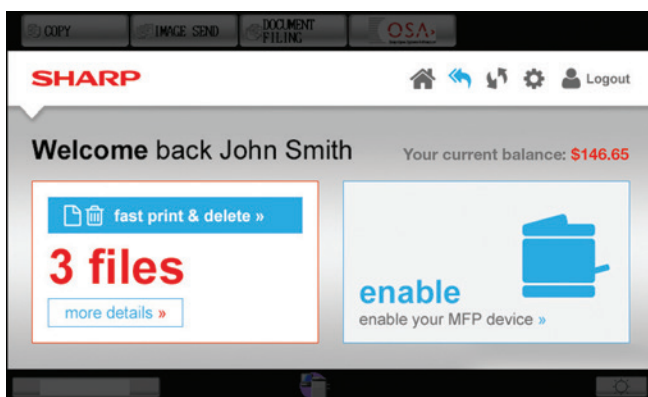
**Manage** MFP activities and feature access control for users and departments to enhance a secured environment.

**Monitor** and centralize access control of MFPs by users or by department.

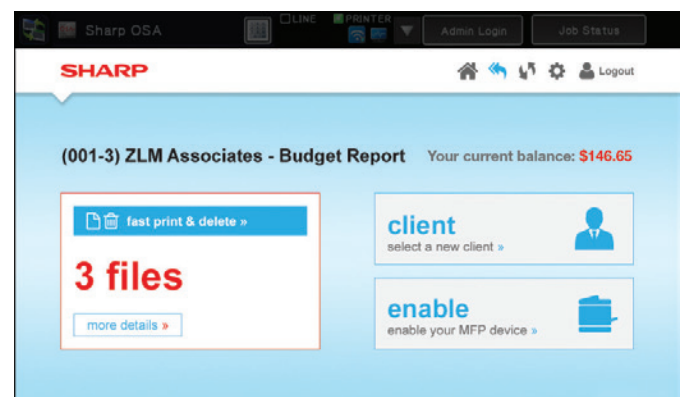
**Cost Recovery** by billing clients back using client matter\*.

**Secure** print/copy/scan activities and allows user flexibility by enabling print release from any network connected MFPs\*.

\* Requires Kayleigh options MX-SW311 and/or MX-SW312.



Example of user interface on Sharp MFP panel.



Example of client matter display.

# MEET ALL YOUR OFFICE NEEDS

## Kayleigh Software Suite:

- MX-SW310 Job Accounting
- MX-SW311 Pull Print Option
- MX-SW312 Client Billing Option

Example of Admin UI- List of Users

Example of Admin UI- Log of Job Activities

## Server System Requirements

### SERVER HARDWARE REQUIREMENTS

Minimum Processor Speed: 1.5 GHz

Minimum HDD: 25 GB

Minimum RAM: 1GB

### SERVER SOFTWARE REQUIREMENTS

Java GlassFish Server Open source Edition 4.0 (Supplied with installer)

Java SE Development KIT (JDK) 1.7.0 (supplied with installer)

PostgreSQL 9.3.3-1 database (supplied with installer)

Apache 2.4.10 web server (supplied with installer)

PHP 5.4.33 (supplied with installer)

Internet Explorer 6 or above or Firefox 3 (or above)

### MFP REQUIREMENTS

Sharp OSA 3.5 or above enabled MFP

MX-AMX 3 key required

### SUPPORTED SERVER OPERATING SYSTEM

Windows Server® 2008 Standard 32 or 64 bit

Windows Server® 2008 Enterprise 32 or 64 bit

Windows Server® 2008 R2 Standard 32 or 64 bit

Windows Server® 2008 R2 Enterprise 32 or 64 bit

Windows Server® 2012/2012 R2 Essentials 32 or 64 bit

Windows Server® 2012/2012 R2 Standard 32 or 64 bit

Windows® 7 Professional 32 or 64 bit

Windows® 8.1 Professional 32 or 64 bit



SHARP ELECTRONICS CORPORATION  
1 Sharp Plaza, Ste. 1,  
Mahwah, NJ 07495-1123  
1-800-BE-SHARP • www.sharpsusa.com

Design and specifications subject to change without notice. Sharp, Sharp OSA and other related trademarks are trademarks or registered trademarks of Sharp Corporation and/or its affiliated companies. Microsoft, Windows are registered trademarks of Microsoft Corporation in the United States and/or other countries. All other trademarks are the property of their respective holders.