

SHARP®

POWERFUL PERFORMANCE ANYWHERE YOU NEED IT



SHARP
MX-B402



MX-B402


POWERFUL

MX-B402

Sharp combines the **simplicity and convenience** of network printers with the **multi-tasking productivity** of MFPs to achieve the best of both worlds. The MX-B402 is an exciting example of the **SHARP® Frontier Series**, bringing exceptionally crisp output closer to the workgroup with a hybrid design that has a small footprint to fit into environments others won't, yet isn't small on functionality. The **large 7" wide-screen color touch-panel** simplifies operation by providing an intuitive user interface to keep ahead of today's fast-paced office document distribution needs. Incorporating **common controller architecture**, this model provides uniform functionality and operability



as found in Sharp's **award-winning MFP product line**. Engineered to help reduce operating costs and downtime, the MX-B402 is easier than ever to set up, monitor, and maintain. This model offers modular expandability, remote-access capabilities, and a **value-added approach** to network and software integration. The latest in a long line of innovative products from today's fastest-growing name in office electronics, it also offers Sharp's **award-winning SHARP OSA® platform** and the optional **industry-leading Sharp security suite** to help protect data and control access. In addition, its ease and versatility will change your mind about MFPs. More power, less complexity...that's **work without limits**.



Sharp's MX-B402 offers productivity in action to speed output and streamline document workflow for maximum results.

ENGINEERED FOR PERFORMANCE

FLEXIBILITY

PRODUCTIVITY

INTEGRATION

USER-FRIENDLY

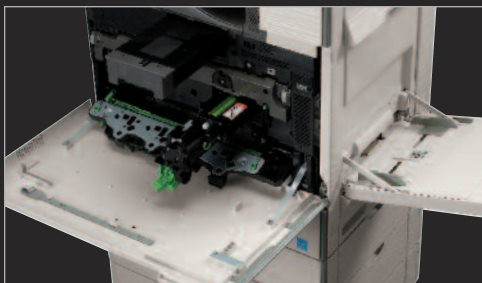
- Crisp black-and-white documents can be quickly and accurately produced at speeds up to **40** pages per minute, and print resolutions up to **1200 x 1200 dpi**.
- Powerful 800 MHz controller for **true multi-tasking** performance and increased **multi-functional** productivity.
- The **high-yield** toner cartridge provides **double the lifespan** versus its predecessor.
- The **refillable developer** system helps **lower cost per copy** and **increases environmental sustainability**.
- Large **7" high-resolution, wide-screen color touch-panel** with intuitive graphical user interface makes advanced copying, printing, scanning and faxing functions easy-to-use.
- The optional, **space-saving Inner Finisher** not only provides exceptional productivity, but also automates time-consuming tasks such as stapling, sorting and offset stacking.
- The optional **Business Card Feeder** can help automate contact database entry.
- Standard 50-sheet reversing single pass document feeder supports **full-color** scanning.
- Sharp's **ImageSEND™** technology securely scans documents to seven types of destinations at speeds up to 35 images per minute.
- Sharp's easy-to-use Document Filing System provides a high-capacity up to 50 GB of hard drive space for **fast document storage and retrieval**, with **thumbnail view and image preview**.
- Standard PCL®6/PCL5e **printing system** with **direct print** function and available PostScript® 3™ and Windows® XPS options.
- The optional **Super G3 Fax Kit** provides intelligent Inbound Fax Routing.
- Third-generation Sharp OSA® development platform enables users to **access network applications**, helping to **reduce redundancy and streamline workflow**.
- Offers Sharp's latest **award-winning** multi-level document and network **security suite**, which conforms to the **IEEE-2600™ – 2008 security standard** for MFP devices.
- Advanced **web-based device management** offers administrator and user-level login control.
- The cutting-edge Sharp **Remote Front Panel** feature allows administrators and help desk professionals to access and control the device from a remote PC workstation.



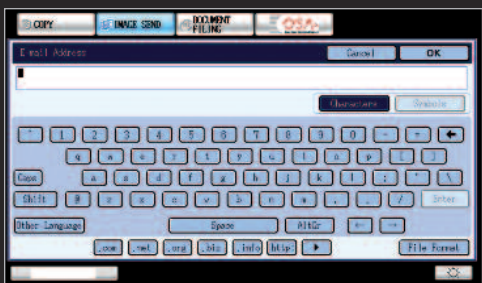
INNOVATION

INNOVATION THAT BOOSTS PRODUCTIVITY

JOB STATUS
SYSTEM
SETTINGS



High yield, long life toner cartridge (shown above) and a refillable developer system help reduce copy cost and increase environmental sustainability.



Qwerty Keyboard—On-screen, touch panel keyboard makes it easy to enter e-mail addresses and more.

Get on the fast track in today's competitive business environment with Sharp's powerful and dynamic MX-B402.

Low Cost of Ownership and Enhanced Sustainability

Designed to be both cost-effective and environmentally-supportive, the MX-B402 offers low power consumption and long-life parts. Key cost-saving features include a high-yield toner cartridge with twice the lifespan of its predecessor, as well as a refillable developer system that increases sustainability while lowering per copy cost—a winning combination.

The Flexibility and Performance You Need

With a large 7" (diagonally measured) customizable high-resolution touch-screen color display and a powerful 800 MHz multi-tasking controller, the MX-B402 high-speed workgroup document systems can help elevate your office productivity to the next level. The intuitive menu navigation system with razor-sharp graphics makes operating the MX-B402 simple and easy. With Sharp's true multi-tasking controller, complex print jobs can be processed quickly, even while documents are being scanned. But that's just the beginning—with a Standard 50-sheet reversing single pass document feeder with full-color scanning, automatic duplexing, electronic sorting and integrated offset stacking, you'll complete even large jobs in a snap.

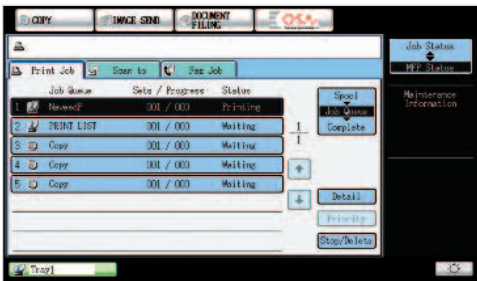
High Quality Output You Can Rely On

The MX-B402 combine Sharp's second generation micro-fine toner technology with 1200 x 1200 dpi print resolution to produce documents with crisp, clear images and high quality detail.

Reliability Your Business Can Depend On

Sharp's MX-B402 delivers professional performance and optimal productivity to satisfy your daily production needs. Copy/print speeds up to 40 ppm help you meet project deadlines with time to spare. The flexible paper handling system accommodates special media and envelopes through its multi-purpose tray and can be expanded from a single drawer system to a four-drawer console configuration. With available on-line paper capacity of up to 2,100 sheets, the MX-B402 is ready when you are.

ADVANCED WORKFLOW MANAGEMENT



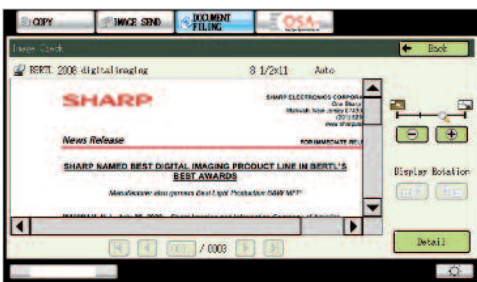
Job Status displays the status of all print, copy, scan and fax jobs waiting in queue. Instantly prioritize your job.



Enhance productivity with the Business Card Feeder.



Sharp's easy-to-use Document Filing System with Thumbnail Preview.



Sharp's Image Check feature allows users to preview stored documents at the device. Easily zoom, rotate and scroll.

User-friendly features help increase document workflow efficiency and optimize day-to-day operations.

A True Multi-Tasking Document System

The MX-B402 features a **high-performance, 800 MHz true multi-tasking, multi-function controller** that delivers copy, print, scan and fax jobs continuously for optimum efficiency.* Some controllers only perform one or two operations at a time. But the MX-B402 continually processes incoming copy, print, scan and fax jobs even while existing jobs are performed.

Job Status allows you to display the status of all of your current print, copy, scan and fax jobs waiting in queue. Instantly prioritize your job and help **increase workgroup efficiency**. *The Result?* A workflow that virtually never slows down—even at crunch time.

Direct USB Scanning and Printing Adds Convenience and Portability

With **Direct USB Scanning and Printing**, the MX-B402 allows users to scan and print files in a variety of popular formats directly from USB memory devices such as a ThumbDrive™ or ClipDrive™. It provides a whole new level of convenience. It comes in handy for scanning documents directly to USB memory devices and is an easy way to print PDF documents.

Further Enhance Productivity with the Business Card Feeder

Help solve a real-world business problem. The optional **Business Card Feeder** can easily and automatically feed and scan business cards, and is capable of working with commercially available business card scanning software to help automate contact database entry. A **differentiator** in today's world of MFP offerings.

Innovative Document Filing

Sharp's easy-to-use **Document Filing System** provides up to 50 GB of hard drive space to store frequently used files such as forms, reports and other commonly used documents for printing and distribution. Plus, with private storage features and **PIN-code access**, you can store sensitive documents securely. And, with Sharp's **Quick File Folder**, you can temporarily store documents with fast, one-touch simplicity. An easy-to-use backup system helps ensure your files are safe.

To make managing all of your stored jobs simple, the MX-B402 color touch-screen display offers an intuitive **thumbnail view** to allow walk-up users to easily locate stored jobs even if they don't know the file name. For added convenience, an advanced **Image Check** feature allows selected files to be previewed on-screen—walk-up users can even zoom in, change print attributes or move a file to another folder. With storage capacity for up to 5,500 pages, your document workflow can improve significantly.

Get Professional Results with Inner Finishing

The **optional Inner Finisher** can be added without taking up additional floor space. The space efficient finisher not only provides exceptional productivity but also automates time-consuming tasks such as stapling, sorting and offset stacking.

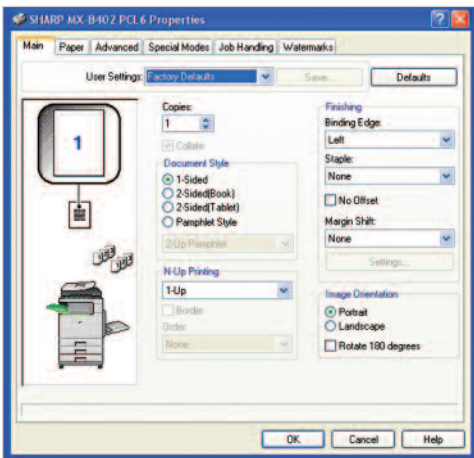


MX-B402 with space-efficient optional Inner Finisher

*Some features may require optional equipment.



PRECISION ENGINEERED, INNOVATIVE FEATURES



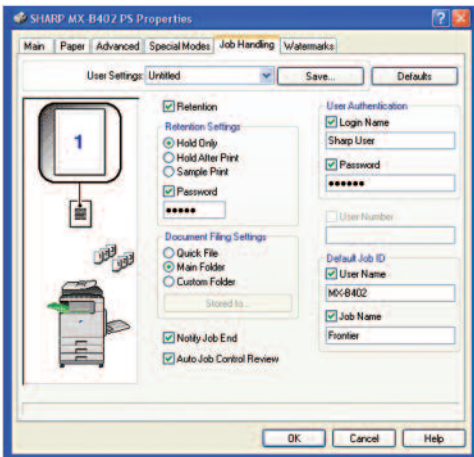
Sharp's intuitive print drivers make accessing all of the MX-B402 print features quick and easy.

Robust, easy-to-use print drivers help maximize document workflow efficiency in any business environment.

Exceptional Print Quality with Professional Output

With the MX-B402, your business can produce razor-sharp B&W documents. Plus, with **1200 x 1200 dpi resolution**, even documents with fine detail will look great! Sharp's easy-to-use print drivers allow users to set up even complex jobs with just a few mouse clicks. Simple plug-and-play operation makes it easy to take advantage of advanced feature sets in a snap. Advanced functions like Two-Sided, Pamphlet Style and Carbon Copy Print allow you to quickly produce a variety of document types.

The **optional inner finisher** delivers convenient finishing features that include corner stapling for up to 30 sheets, sorting and offset stacking.* Now you can produce professional quality documents from your desktop that look so good, everyone will think you had them sent out to a printer.



With Sharp's advanced job handling features, users can easily retain print jobs on the MX-B402 hard drive for reprinting at a later date.*

Advanced Job Retention Features Enhance Productivity*

Sharp's innovative printing system makes it easy for any business to store and archive print jobs. With the ability to retain jobs on the MX-B402 hard drive, documents can be stored and reprinted again and again by walk-up users or through the **embedded web page**. Print jobs can even be sent to the MX-B402 for archiving without printing them! Need to store sensitive documents? No problem! Users can assign a password right from the print driver or from the MX-B402 operation panel!

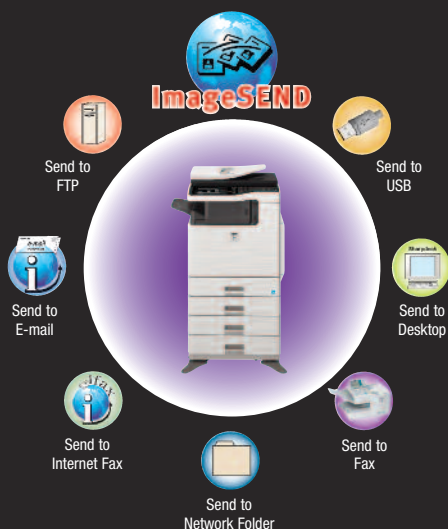


MX-B402 with compact cabinet-top design—anywhere you want it.

*Some features may require optional equipment.

VERSATILITY

FLEXIBLE DOCUMENT DISTRIBUTION



In today's fast-moving business environments, you need every advantage you can get—Sharp's Frontier Series gives you the edge.

Integrated Network Scanning

With Sharp's powerful **ImageSEND** technology, you get one-touch distribution features that help centralize document workflow, reduce mail costs and save time. With up to **seven destinations**—E-mail, Desktop, FTP, Network Folders (SMB), USB, Fax and Internet Fax—getting your document where it needs to go is as easy as pushing a button. High-volume workgroups will appreciate the **Send to Group** mode that allows you to mix group broadcast to E-mail, Fax, and Internet Fax for increased efficiency.*

Convenient E-mail Distribution

With Lightweight Directory Access Protocol (LDAP), there's no need to manually enter a recipient's complete e-mail address. Simply enter the first few characters and the MX-B402 automatically searches and displays a list of matching names. **Unique File Naming** allows users to enter specific file names with custom subject fields, so it's easier than ever to recall files when you need them. And with **Sharpdesk®** personal document management software, users can easily organize their scanned documents and integrate them into everyday workflow.*

Sharpdesk Software for Total Document Management

Powerful, flexible and intuitive, Sharpdesk personal document management software enables you to easily manage all of your scanned documents. Easy-to-use tools help you organize, edit, even combine scanned files, for maximum productivity. The innovative **Search and Index** feature provides sophisticated tools that enable you to retrieve archived documents with incredible simplicity.

Integrated Super G3 Fax and Internet Fax

Add powerful facsimile capability to your MX-B402 with the optional Super G3 fax module, which offers advanced features such as automatic stapled/copied receptions and Inbound Fax Routing to e-mail. Sharp's innovative **PC fax driver** enables users to send fax documents right from their desktop. For Internet Fax operation, add the optional B&W Internet Fax expansion kit.



Intuitive desktop display features thumbnail viewing and file search allows searching by file name, keyword, or thumbnail.



The Sharpdesk Connector for Sharp OSA v 3.5 enabled MFPs enhances scan workflow options.



*Some features may require optional equipment.



INTEGRATION

GET MORE OUT OF NETWORK APPLICATIONS



Sharp OSA® Technology at a Glance

- Automate tasks and save time with seamless integration between the MX-B402 and network applications
- Centralized applications minimize set-up and installation on multiple Sharp products
- Virtually eliminates repetitive tasks and streamlines workflow, increasing efficiency
- Maximize your return on investment with tighter integration among IT assets
- Industry standard programming leads to faster deployment of new solutions

To help streamline document workflow and enhance productivity, the MX-B402 supports the Sharp OSA platform.

Versatile Application Integration

The MX-B402 high-speed monochrome document systems provides powerful functionality for your business so you can immediately leverage your previous investments in data management infrastructure.* While others are limited to a small circle of productivity, the innovative Sharp OSA development platform allows users to maximize the power of their back-end systems right from the control panel. It's really a new way of thinking with "power at the panel" for automation of tasks and a streamlined workflow.

Save Time, Increase Efficiency

You'll save time and increase the efficiency of everyday tasks with Sharp OSA technology because it can be virtually seamless to the user. Any MX-B402 series document system anywhere in the organization can display choices that were once only available on a desktop PC. With one-touch access to business applications via Sharp OSA integration, you can start and finish a document distribution task without worry.

Complement Your Infrastructure

The Sharp OSA development platform is the logical choice as a complement to your existing infrastructure. With the **standard application communication module and external accounting module**, the MX-B402 becomes the gateway to providing fast, flexible access to documents and applications... no matter where you are in the office. Optionally you can get the controlled access and tracking ability you require with tighter integration capabilities for network security and accounting applications. With such comprehensive control, you'll be able to manage your document workflow easily, efficiently, and more securely.

Customized Technology

Sharp OSA technology also provides customization. With the ability to personalize applications and processes specific to your business, Sharp OSA technology can help eliminate redundancy and streamline workflow, helping to save time and optimize productivity. And since Sharp OSA technology utilizes industry-standard network protocols such as SOAP, XML, and XHTML, third party software developers can deliver customized solutions to your business faster than ever.

**Some features may require optional equipment.*

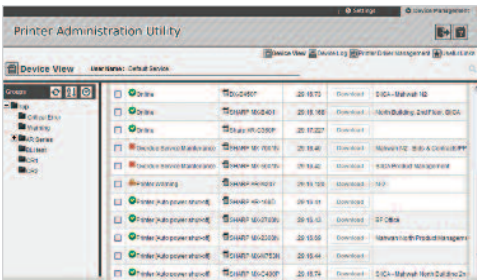


ADVANCED DEVICE MANAGEMENT

Engineered with you in mind, the MX-B402 combines easy-to-use integrated software with robust capabilities.

The Sharp Administration Utility Suite

Sharp's Administration Utility Suite takes management of your MX-B402 to the next level. This easy-to-use software allows you to take control of the versatile system features and simplifies installation and management.



Printer Administration Utility Suite

- With **Printer Status Monitor**, network users can view printer conditions, check paper levels, toner, and more—all through an easy-to-use interface.



Remote Device Management Suite

- With Sharp's advanced **Printer Administration Utility**, administrators can easily manage the setup, configuration, device settings, cloning and more! New advanced features such as **Remote Front Panel** allow administrators and support personnel to view and control the LCD panel of the machine remotely from virtually any PC on the network!* Plus, with event-driven, real-time service alerts, administrators and supervisors can achieve higher productivity. Now, it is easier than ever to view click counts, history reports and more.

- Experience the convenience of an **Embedded Web Page** right from your desktop! This advanced web-based management tool allows users to create and manage their own network scanning destinations, profiles and web-links. Administrators can access device settings, account information and security settings.

Take Charge of Usage and Costs

With Sharp's **device management system**, administrators and supervisors can define user groups on the MX-B402 to manage and restrict features, such as copying, scanning or printing. Easily set up a custom user group to manage page counts (copy, print, scan or fax operations). The MX-B402 can store **profiles for up to 1,000 users**.

24/7 Training with My Sharp

Managing all of the advanced features of your Sharp product is simple and easy. Ask your Authorized Sharp Dealer about **My Sharp**. This dedicated customer training website is customized to your MX-B402 series document system and allows you to locate resources and find information specific to your configuration, truly helping you maximize your investment.



Remote Front Panel



*Some features may require optional equipment.

HEIGHTENED SECURITY

PRIVACY
AUTHORIZATION
CONFIDENTIALITY
PROTECTION

Innovative document and device protection helps ensure confidentiality.

To help protect your data, the MX-B402 offers several layers of security, making Sharp the optimum choice to protect employee privacy and intellectual property. As the leader in office equipment security, Sharp makes it easy for virtually any business or government entity to safely deploy digital copying, printing, scanning and faxing.



Authority Groups and Access Control

Advanced account management enables administrators to set authority groups for access to features of the MX-B402. Administrators can control which department, for instance, has full access to copying, printing, scanning and/or fax. Walk up users enter a code, Local Name and Password, or LDAP User Authentication to access their features assigned to their group. Users can also login utilizing a human interface device (HID) such as a Smartcard or Common Access Card (CAC).*



Data Erase and Encryption*

To help protect your data, the MX-B402 offers an optional data security kit that encrypts document data using **AES (Advanced Encryption Standard) 256-bit encryption**. Additionally, the data security kit erases the temporary memory on the hard drive by overwriting the encrypted data up to seven times, offering an unprecedented level of assurance. Additionally, the data security kits for these models comply to the IEEE-2600-2008 security standard for MFP devices. This standard specifies security requirements and provides a new international reference to assess contemporary MFP security.



Network Scanning Access

To help protect your network from unauthorized e-mail communications, the MX-B402 supports **User Authentication**, requiring users to login before performing any network scanning operations.



Control Device Access Over the Network

To help restrict access to the device over the network, the MX-B402 offers IPsec, SMB and extended support for **SSL Encryption (Secure Sockets Layer)**, **IP/MAC address filtering**, IEEE 802.1x authentication, HID Card Reader Authentication support, protocol enable/disable and port management for maximum security.



Documents Remain Confidential

To help protect your printed documents from unauthorized viewing, the MX-B402 offers encrypted PDF files for printing and scanning as well as Confidential Printing that requires users to enter a PIN code or use their Access Card in order to print a queued document. Additionally, Secure Fax Release ensures received fax documents are held in memory until an authorized user enters a PIN code. So compliance with healthcare regulations such as HIPAA is easier.



Tracking and Auditing Information

Legislation and industry policies require companies to be more aware of information flow from their offices. Sharp offers both built-in and additional hardware/software which allows users to control, access and track usage of each device on the network.

These scalable security offerings aim to protect your intellectual property, preserve confidential information and help your business to meet regulatory requirements, such as the Health Insurance Portability and Accountability Act (HIPAA), and the Gramm Leach Bliley Act (GLB). For additional information visit: www.sharppusa.com/security.

*Some features may require optional equipment.



ECOLOGICAL COMMITMENT



Sharp's ongoing commitment and dedication to developing eco-friendly document systems set a high standard for the industry.

An Environmentally Responsible Approach to Product Design

The MX-B402 utilizes Sharp's advanced micro-fine toner technology, which offers a lower consumption rate and produces less waste than conventional toners, resulting in longer replacement intervals. Sharp supplies are packaged using fully recyclable materials. Long-life consumable parts help minimize service intervals and down time, resulting in lower operating costs. With two different energy saving modes, power can be reduced or shut off at set intervals. All Sharp document systems are RoHS compliant to restrict the use of hazardous substances.

Toner Recycling Program

As part of our commitment to helping preserve the environment, Sharp offers our customers zero-waste-to-landfill recycling for all Sharp consumables, including cartridges, bottles, toner collection containers and drum units. Sharp encourages customers to recycle their used Sharp toner cartridges in bulk by providing a pre-paid Recycling Kit for their return to our facility.

Environmental Leadership

As a testament to our commitment to the environment, Sharp is a three-time winner of the ENERGY STAR annual Excellence in Energy Proficiency Product Design. Sharp is also a four-time winner of the SmartWay® Excellence Award, which recognizes companies for conserving energy and lowering greenhouse gas emissions in logistics and transportation. Sharp was also a previous recipient of the Excellence in Partnership Green Contractor Award and the Evergreen Award from the General Services Administration (GSA) and the Coalition for Government Procurement. These awards recognize environmentally responsible businesses and their efforts on recycling, waste reduction and affirmative procurement practices. .

Global Initiatives

Sharp is committed to environmental sustainability and corporate responsibility including planning, design, manufacturing, distribution and product end-of-life management. For more information about Sharp's environmental leadership including information about energy efficient products, electronics or toner cartridge recycling, please visit www.sharppusa.com/environment.

MX-B402 SPECIFICATIONS

Main Specifications

MX-B402	Includes multi-tasking controller, 80 GB HDD with document filing system, PCL [®] 5e/PCL 6/PostScript [®] 3 network printing, network scanning, 50-sheet RSPF, auto-duplex, 500-sheet paper drawers and 100-sheet bypass. Toner and developer are sold separately.
Type	Monochrome multi-function digital document system
Functions	Copy, print, network print, network scan, document filing and fax ¹
Copy System	Dry electrostatic transfer/Dual component developer/Magnetic brush development/OPC drums/HeatRoller fusing/Cold cathode white lamp
Originals	Sheets and bound documents
Max Original Size	8-1/2" x 14"
Copy Size	Min: 5-1/2" x 8-1/2", Max: 8-1/2" x 14"
Copy Speed	40 ppm (Letter)
Multiple Copy	Max: 999 copies
First Copy Time	Platen glass: 8.0 seconds or less ² RSPF: 9.9 seconds or less ²
Warm-Up Time	50 seconds or less
Magnification	50% to 200% in 1% increments (50 to 200% for RSPF)
Original Feed	50-sheet RSPF with original size detection
Scan Speed	Copy mode (Simplex): Up to 35 ipm (B&W) @ 600 X 300 dpi. Network Scan (Simplex): Up to 35 ipm (B&W or color) @ 200 x 200 dpi.
Original Sizes	5-1/2 x 8-1/2 / 8-1/2 x 14 (1-sided: 9 to 32 lb. bond; 2-sided: 13 to 28 lb. bond)
Paper Feed System	Standard: 500 sheet paper drawer (Letter/Legal) and 100 sheet bypass tray (Letter/Legal). Optional: Up to 3 additional 500-sheet paper drawers (Letter/Legal) ²
Paper Types	Paper drawers: 16-28 lb. bond. Other types include: plain, pre-printed, recycled, pre-punched, letterhead, and color paper. Bypass tray: 16-28 lb. bond (plain paper), 15-16 lb. (thin paper), 28 lb. bond-110 lb. index (heavy paper), 20-24 lb. (Monarch/Com-10 envelope). Other types include label paper, gloss paper, pre-printed, recycled, pre-punched, letterhead, color film and OHP Film.
Duplexing	Standard automatic duplex copying, scanning and printing
CPU	Power QUICCIII-MPC8533E/800MHz
Interface	RJ-45 Ethernet (10Base-T/100Base-TX/1000Base-T), USB 2.0 (Host Port), USB 2.0 (Device Port)
Memory	Standard 512 MB (copier); 512 MB (printer/network scanning) memory
Hard Disk Drive	80 GB; 38 GB Main Folder/12 GB Custom/Quick Folder document filing system and electronic sorting
Copy Resolution	Scan: 600 dpi; Copy output: 600 dpi
Exposure Control	Auto Modes: Text, Text/Printed-Photo, Text/Photo, Printed-Photo, Photo, Map, Light Original Settings: Auto exposure control or 9 step manual exposure
Halftone	256 gradations/2 levels (monochrome)
Copy Features	Scan-Once-Print-Many, electronic sorting, offset stacking, Auto Exposure Selection (AES), Auto Paper Sensing (APS), Auto Magnification Sensing (AMS), Auto Tray Switching (ATS), Auto Shut-Off (ASO), rotation copy, reverse copy, pamphlet copy, margin shift, edge erase, OHP insertion, job build, card shot, reverse image, black-white reversal, centering, proof copy, 2-in-1, 8 business cards layout, photo repeat, document filing, account management, job programs, date/character/page stamp
Account Control	Up to 1000 users. Supports user-number authentication (on device), login name/management, date/character/page stamp, Copy, Print, Scan, Fax and Document Management
Output Tray Capacity	Main output tray (top) 250 sheets (face down)
Firmware	Flash ROM with local (USB); network update capability and firmware update 1 to N with Printer Administration Utility (PAU)
Configuration Method	Web-based management system with user/administrator level login security, cloning (1 to N) with Printer Administration Utility (PAU) and Remote Front Panel access

Service/Maintenance	Printer Administration Utility (PAU) and Remote Front Panel access to service logs, click counts, diagnostic data, and service alerts.
Power	AC 100-127VAC, 60HZ, 12 AMPS
Power Consumption	Maximum: 1.44kW or less
Weight	Approx. 97 lbs. (base model) including supplies
Dimensions	22-3/64" x 19-13/32" x 28-7/64"

Network Printing System (Standard)

PDL	PCL5e, PCL6, PostScript 3 compatible, XPS ¹
Resolution	1200 dpi, 600 dpi
Print Speed	40 ppm (Letter)
Print Drivers	CD-ROM: Windows 2000, Windows XP, Windows Server [®] 2003, Windows Vista [®] , Windows 7, Windows Server 2008, MAC OS [®] OS-X (including 10.4.11, 10.5-10.5.8, 10.6-10.6.2), all MAC PPD. Via Download: Windows Server 2008R2, MAC OS 9.0-9.2.2, OS-X 10.2.8, 10.3.9
Print Features	Continuous printing, duplex printing, pamphlet printing, N-up printing, image rotation, different cover page/last page, transparency inserts, carbon copy print mode, fit-to-page, poster print, margin shift, mirror image, watermarks, overlay, confidential print, confidential batch print, print hold, bypass printing, job priority printing and direct printing. ¹
Direct Printing	File Types: TIFF, JPEG, PCL, PRN, TXT, PDF, Encrypted PDF, PostScript and XPS ¹ . Methods: FTP, Web Page, E-mail and USB Memory
Resident Fonts	80 outline Fonts
Interface	RJ-45 Ethernet 10Base-T/100Base-TX/1000Base-T
Operating Systems	Windows 2000, XP, Server 2003/2008, Vista, 7, MAC OS-9.0, MAC OS-X, Novell [®] Netware [®] 3x, 4x, 5x, Sun [®] OS 4.1x, Solaris [®] 2x, UNIX, Linux, Citrix [®] (Metaframe, Presentation Server 4, 4.5) and Windows Terminal Services
Network Protocols	TCP/IP (IPv4, IPv6, IPSEC) SSL (HTTP, IPP, FTP), SNMPv3, 802.1x for Windows and UNIX. LPD and LPR for UNIX. IPX/SPX [®] for Novell environments. EtherTalk [®] and NetBEUI, AppleTalk for Macintosh [®] environments.
Printing Protocols	LPR, IPP, IPPS, PAP, Raw TCP (port 9100), FTP and Novell Pserver/Rprinter
Network Security	IP/Mac address filtering, protocol filtering, port management, user authentication and document administration.
Security Standards	IEEE 2600-2008, DoD (NSTISSP) #11, DoD Directive 8500.2, DoD (DISA)

Network Scanning System (Standard)

Max Original Size	Platen Glass: 8-1/2" x 11" RSPF: 8-1/2" x 19-5/8" (long-size mode)
Optical Resolution	600 dpi
Output Modes	600 dpi, 400 dpi, 300 dpi, 200 dpi, 100 dpi
Scan Modes	Color, monochrome, grayscale
Image Formats	Monochrome: TIFF, PDF, Encrypted PDF, XPS ¹ Color: Grayscale, Color TIFF, JPEG, PDF, Encrypted PDF, XPS ¹ Internet Fax: TIFF-FX, FIFF-F, TIFF-S ¹
Image Compression	Monochrome Scanning: Uncompressed, G3 (MH), G4 (MR/MMR) Color/Grayscale: JPEG (High, middle, low) Internet Fax mode: MH/MMR (option)
Scan Destinations	E-mail, Desktop, FTP, Folder (SMB), USB, Internet fax (option), Super G3 fax (option)
One-Touch Destinations	Up to 999 (combined scan destinations)
Group Destinations	Up to 500
Programs	48 (combined)
Max. Jobs in Memory	Up to 94
Network Protocols	TCP/IP and SSL (Includes HTTP, SMTP, LDAP, FTP, POP3), SMB, ESMTP and 802.1x
Network Security	E-mail server user authentication for LDAP and Active Directory
Software	Sharpdesk [®] desktop document management software (1 user license)

B&W Super G3 Fax Kit (Option)

Transmission Mode	Super G3, G3
Modem Speed	33.6 KBPS ³
Compression Methods	JBIG, MMR, MR, MH
Scanning Method	Sheet fed simplex or duplex or book
Max Transmit Resolution	400 dpi
Transmit Speed	Approx. 2 seconds with Super G3/JBIG ⁴
Auto Dialing	Up to 999 (combined scan destinations)
Group Dial/Destinations	Up to 500
Inbound Fax Routing	Forwards received fax data to E-mail, FTP, Desktop, SMB
Long Length Originals	Up to 19-5/8" (for transmission)
Programs	48 (combined)
Memory	8 MB (exclusive)
Halftone	256 levels
Fax Features	Quick on-line transmission, direct transmission, F-Code transmission/reception, rotate transmission, timer transmission, anti-junk fax reception, automatically staple received faxes, secure fax release, out of paper memory reception, auto redial, duplex reception transaction reports, activity reports and PC Fax.

Inner Finisher (Option)

Type	Built-in Finisher
Output Capacity	Up to 280 sheets (Letter/Legal), 20 envelopes
Output Delivery	Face down
Stapling Media	Plain/Thin/Heavy/Recycled/Letterhead/Pre-punched/Colored/Preprinted paper
Stapling Positions	Single corner position
Power Source	Supplied from the main unit
Stapling	30 sheets Letter/Legal
Stapled Sets	10 bundles or 300 sheets (letter/legal)
Weight	Approx. 19.8 lbs
Dimensions (When tray is expanded)	18-2/3" x 13-1/16" x 6-3/16"

Optional Equipment

MX-FN12	Inner Finisher
MX-CSX1	500 sheet Paper Feed Unit for Tray 2
MX-CSX2	500 sheet Paper Feed Unit for Trays 3 & 4
MX-DS13	Base Plate
MX-DS14	Stackable Cabinet
MX-BTX1	Business Card Feeder
MX-PUX1	XPS Expansion Kit (Requires MX-SHP1GBXPS)
MX-SHP1GBXPS	Expansion Memory 1 GB (Required for MX-PUX1)
AR-PP1	Bar Code Font Kit
MX-FXX3	Fax Expansion Kit
MX-FWX1	Internet Fax Expansion Kit
DVENDFS	Vendor Cable Kit
DCL310S	CAC External Option
MX-FR26U	Commercial Data Security Kit ⁵
MX-CFCRM1	Card Reader Mounting Kit ⁶
MX-AMX1	Application Integration Module
MX-AMX2	Application Communication Module
MX-AMX3	External Accounting Module

Supplies

MX-B42NT1	Black Toner Cartridge
MX-B42NV1	Black Developer
MX-C40NRB	Black Drum Cartridge
MX-B40HB	Toner Collection Container
MX-SCX1	Staple Cartridge (3 cartridges per carton)

¹ Some features require optional equipment.

² Paper capacity is based on letter size paper.

³ Actual transmission time will vary based on line conditions.

⁴ Based on Sharp Standard Test Chart with approximately 700 characters, letter size in standard resolution.

⁵ Not available at time of launch.

⁶ Specifications may vary depending on product configuration, machine settings and operating and/or environmental conditions.



SHARP ELECTRONICS CORPORATION
1 Sharp Plaza, Suite 1
Mahwah, NJ 07495-1123
1-800-BE-SHARP • www.sharpusa.com

Design and specifications subject to change without notice. Sharp, Sharp OSA, Sharpdesk, My Sharp, and all related trademarks are trademarks or registered trademarks of Sharp Corporation and/or its affiliated companies. Windows, Windows NT, Windows Server and Windows Vista are trademarks or registered trademarks of Microsoft Corporation. All other trademarks are the property of their respective owners.