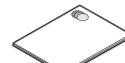
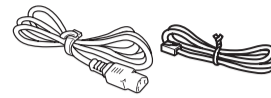
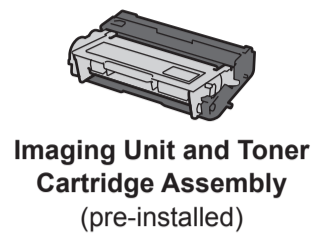
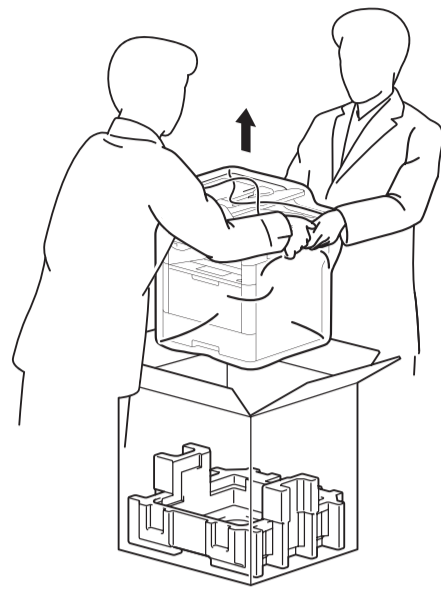
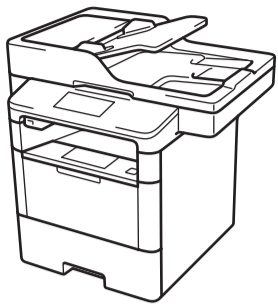




Unpack the machine and check the components



NOTE:

- The included components vary depending on the country or region.
- The available connection interfaces vary depending on the model.
- You must purchase the correct interface cable for the interface you want to use.

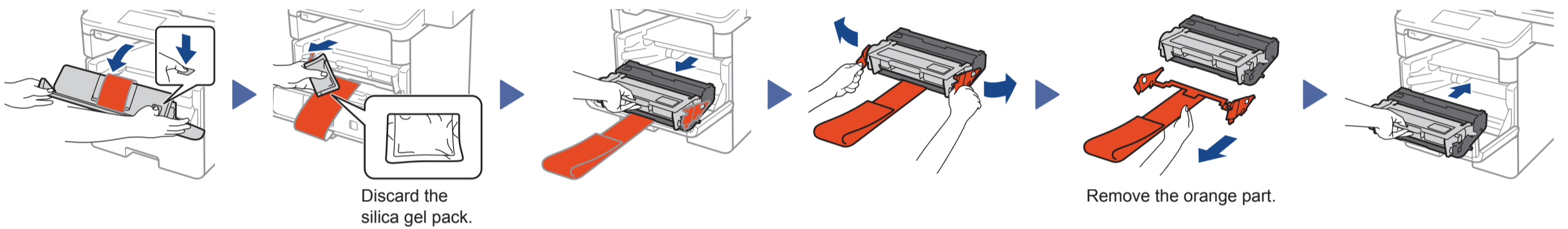
USB cable

We recommend using a USB 2.0 cable (Type A/B) that is no more than 6 feet (2 meters) long.

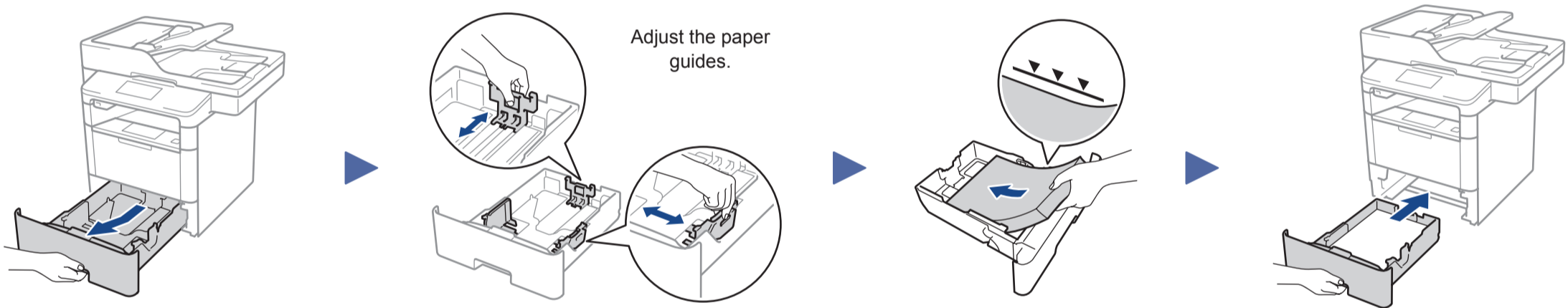
Network cable

Use a straight-through Category 5 (or greater) twisted-pair cable.

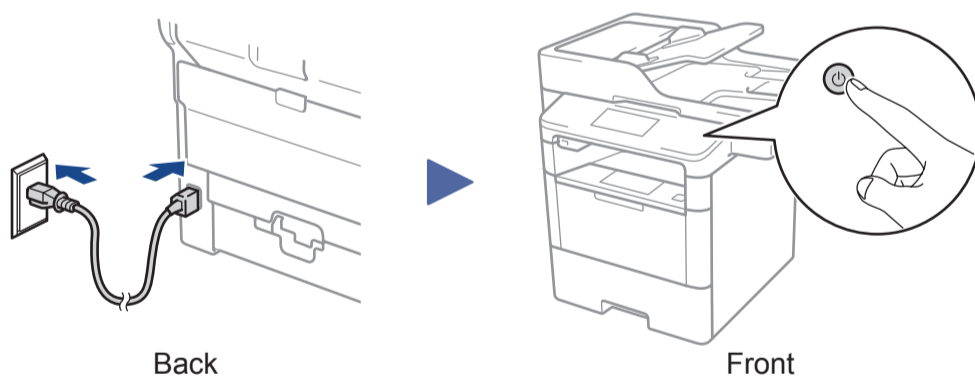
1 Remove the packing materials and install the imaging unit and toner cartridge assembly



2 Load paper in the paper tray

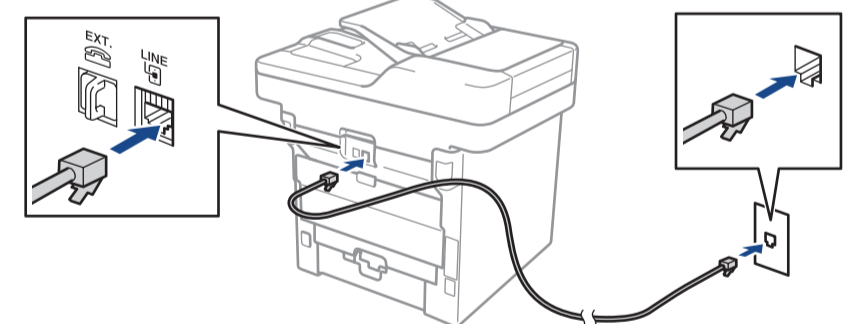


3 Connect the power cord and turn on the machine



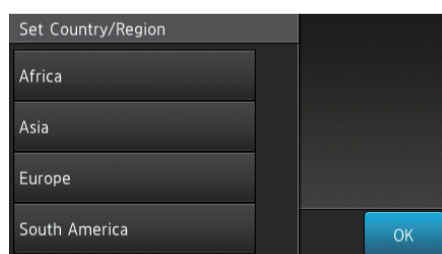
4 Connect the telephone line cord

If you do not plan to use the fax feature on this machine, go to step 5.



5 Select your country (if needed)

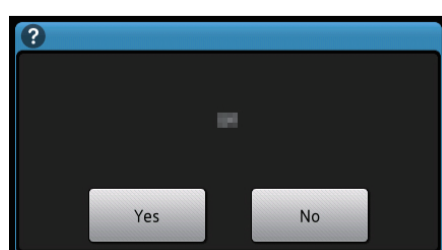
1. If the screen for selecting the country or region appears on the machine's Touchscreen, select the country or region in which you live, and then press [OK].



2. When the confirmation screen appears, press [Yes].

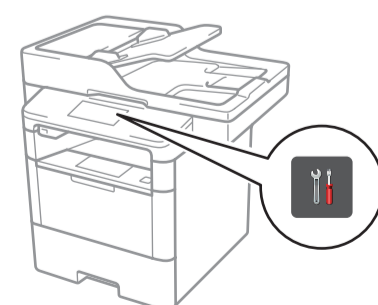
NOTE:

Once the country or region is set, it cannot be changed.



6 Select your language (if needed)

1. On the machine's Touchscreen, press [Settings] > [All Settings] > [Initial Setup] > [Local Language].
2. Press your language.
3. Press [Home].



7 Configure the machine for faxing

If you do not plan to use the fax feature on this machine, go to step 8.

NOTE:

- For more information on using the fax feature, see the *Quick Guide*.
- Your machine is programmed to automatically receive faxes. To change this default mode, see the *Quick Guide*.

A. Set the date and time

Press [Settings] > [All Settings] > [Initial Setup] > [Date & Time].

Date

1. Press [Date].
2. Enter the last two digits for the year using the Touchscreen, and then press [OK].
3. Enter the two digits for the month using the Touchscreen, and then press [OK].
4. Enter the two digits for the day using the Touchscreen, and then press [OK].

Clock Type

1. Press [Clock Type].
2. Press [12h Clock] or [24h Clock].

Time

1. Press [Time].
2. Enter the time using the Touchscreen.
 - 12h Clock only
Press [AM/PM] to select [AM] or [PM].
3. Press [OK].
4. Press .

B. Set the Station ID

Press [Settings] > [All Settings] > [Initial Setup] > [Station ID].

Fax number

1. Press [Fax].
2. Enter your fax number (up to 20 digits) using the Touchscreen, and then press [OK].

Telephone number

1. Press [Tel].
2. Enter your telephone number (up to 20 digits) using the Touchscreen, and then press [OK].

Name

1. Press [Name].
2. Enter your name (up to 20 characters) using the Touchscreen, and then press [OK].
3. Press .

WiFi Alternate wireless configuration method (Setup Wizard)

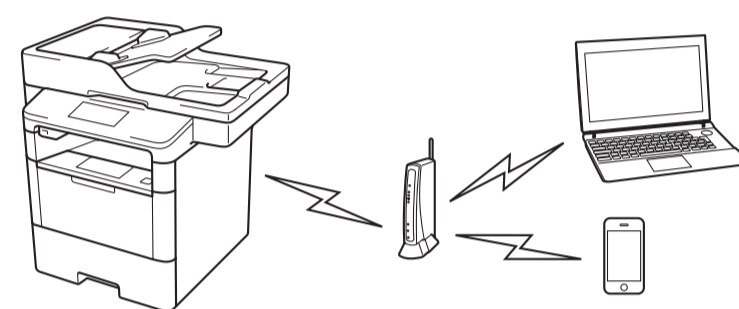
If you are not using a wireless network connection, go to step 8.
Restart your wireless access point/router.



If you cannot find this information, ask your network administrator or wireless access point/router manufacturer.



▶ Press > [Setup Wizard] > [Yes].



▶ Select the SSID.
Enter the Network key.

▶ The LCD displays [Connected].

▶ **Finish**

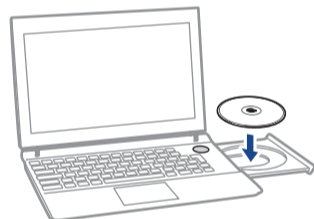
NOTE:
For information on how to enter text, see the *Quick Guide*.

8 Installing the printer driver and utilities

■ For Windows users

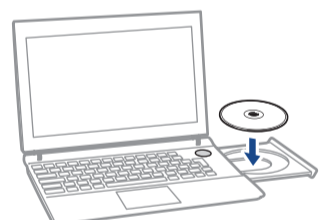
NOTE:

Install the printer driver, and then install the utilities.



Put the Drivers CD into your CD drive.

▶ Follow the on-screen instructions to continue installation.

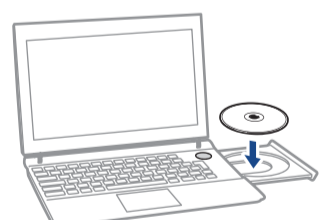


Put the Drivers & Utilities CD into your CD drive.

▶ Follow the on-screen instructions to continue installation.

▶ **Finish**

■ For Macintosh users



Put the Drivers CD into your CD drive.

Open the folder on the CD-ROM that contains the desired printer driver.

→ Select the folder according to the printer driver, operating system, and language to be used.

→ Navigate to : **Driver > MacOSX > OS_10_10_x**

Copy the driver file onto the desktop.

→ The driver folder varies depending on the required size.
Select the file according to your environment.

To mainly use the metric-based paper size such as A4 size :
Japanese : "JP_A4" folder.

Other than Japanese : "WW_A4" folder.

To mainly use the inch-based paper size such as 8 1/2 x 11 :
"WW_Letter" folder.

▶ Double-click the file copied onto the desktop.
The printer driver installer starts.

▶ Click **Continue**, following the instructions on the pages that follow until the **Install page** appears.

▶ Click **Install**.

→ When the name and password prompt appears during the procedure, enter the Administrator name and password.

▶ **Finish**

? Cannot set up your machine?

