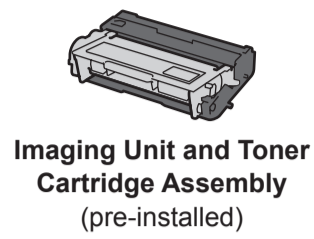
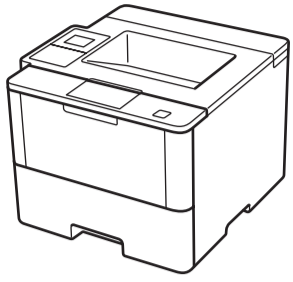




Unpack the machine and check the components

**NOTE:**

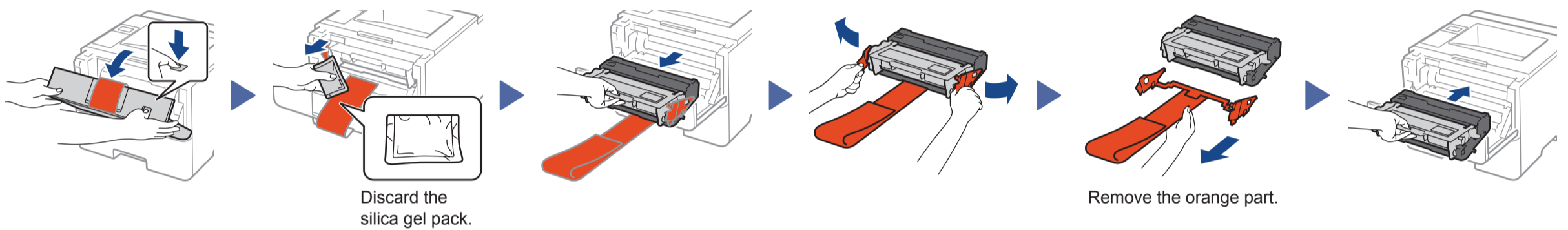
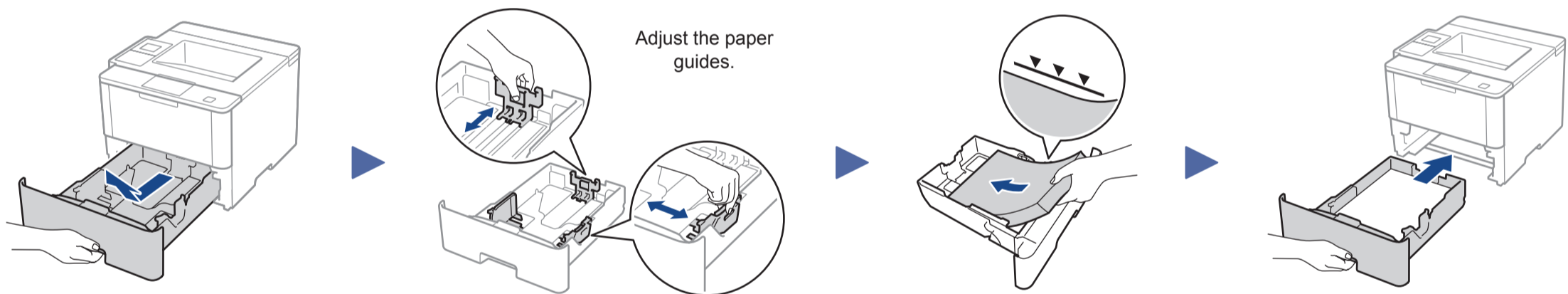
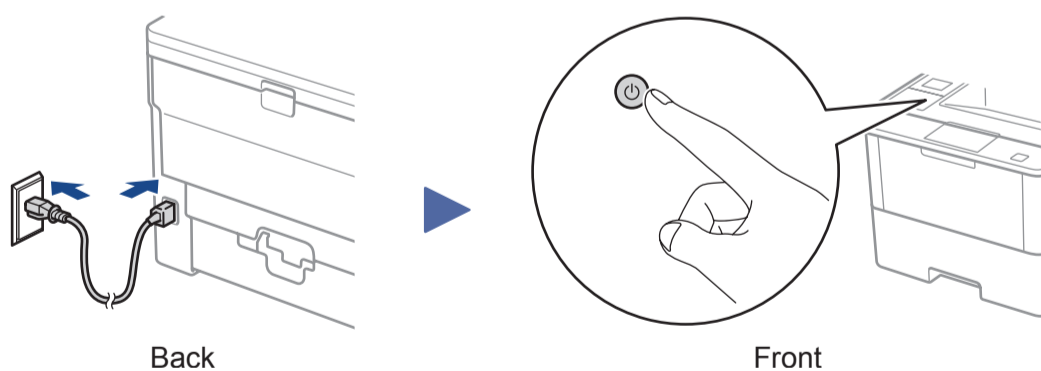
- The included components vary depending on the country or region.
- You must purchase the correct interface cable for the interface you want to use.

USB cable

We recommend using a USB 2.0 cable (Type A/B) that is no more than 6 feet (2 meters) long.

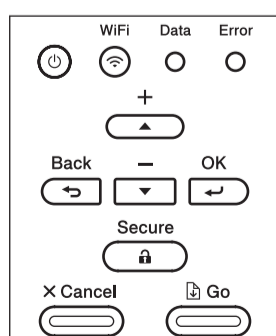
Network cable

Use a straight-through Category 5 (or greater) twisted-pair cable.

1 Remove the packing materials and install the imaging unit and toner cartridge assembly**2** Load paper in the paper tray**3** Connect the power cord and turn on the machine**4** Select your language (if needed)

■ For LCD model

1. Press ▼ or ▲ to select [General Setup], and then press OK.
2. Press OK to select [Local Language].
3. Press ▼ or ▲ to select your language, and then press OK.
4. Press Cancel.



■ For Touchscreen model

1. On the machine's Touchscreen, press [Settings] > [General Setup] > [Local Language].
2. Press your language.
3. Press [Home].



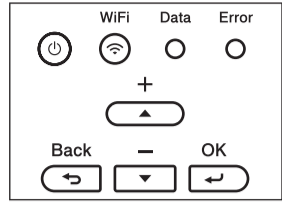
WiFi Alternate wireless configuration method (Setup Wizard)

If you are not using a wireless network connection, go to step 5. Restart your wireless access point/router.

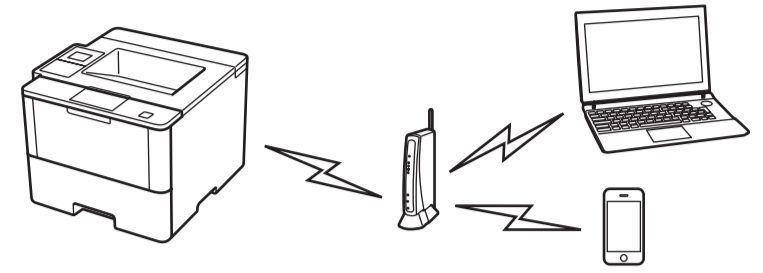


If you cannot find this information, ask your network administrator or wireless access point/router manufacturer.

■ For LCD model



- Press ▲ or ▼ to select the [Network] option, and then press **OK**.
- Press ▲ or ▼ to select the [WLAN] option, and then press **OK**.
- Press ▲ or ▼ to select the [Setup Wizard] option, and then press **OK**.
- When [WLAN Enable?] appears, press ▲ to select [On].



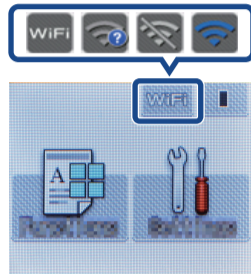
Select the SSID. Enter the Network key.

The LCD displays [Connected.].

Finish

NOTE:
For information on how to enter text, see the *Quick Guide*.

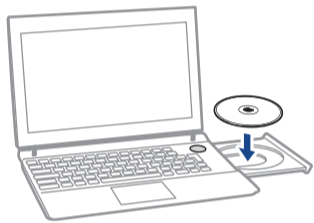
■ For Touchscreen model



Press **WiFi** > [Setup Wizard] > [Yes].

5 Installing the printer driver

■ For Windows users

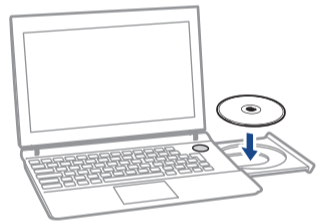


Put the Drivers CD into your CD drive.

Follow the on-screen instructions to continue installation.

Finish

■ For Machintosh users



Put the Drivers CD into your CD drive.

Open the folder on the CD-ROM that contains the desired printer driver.
→ Select the folder according to the printer driver, operating system, and language to be used.
→ Navigate to : **Driver > MacOSX > OS_10_10_x**

Copy the driver file onto the desktop.
→ The driver folder varies depending on the required size. Select the file according to your environment.
To mainly use the metric-based paper size such as A4 size :
Japanese : "JP_A4" folder.
Other than Japanese : "WW_A4" folder.
To mainly use the inch-based paper size such as 8 1/2 x 11: "WW_Letter" folder.

Double-click the file copied onto the desktop. The printer driver installer starts.

Click **Continue**, following the instructions on the pages that follow until the **Install** page appears.

Click **Install**.
→ When the name and password prompt appears during the procedure, enter the Administrator name and password.

Finish

? Cannot set up your machine?

